

Duct Design Input

Model _____ **Mfg.** CMH-MFG-929 **Date** 10/8/2018 **Source** 29m151

Design Type	Flow Direction	Plenum Connection	Plenum Location	Plenum Width X Plenum Length
Double-section	Down Flow	Direct to a Trunk	Floor B	11 X 13 (Sqr. in)

Note: all the unspecified dimensions are in inches.

Crossover	Supply	To	Material	H / D	Width	Length (ft)	Offset Dir.	Offset
1	Floor B	Floor A	Flex	12	N/A	15	Center	0

Floor A	Vertical	Material	Trunk H	Trunk W					
	First Floor	Aluminum	5	12					
	Direction	Distance(ft)	Boot Type	Boot H/D	Boot W	Boot L (ft)	Reg. Type	Register H	Register W
	Left 1	6.75	Reg. Boot	4	10	0.5	Boot Reg.	4	10
	Left 2	1	Reg. Boot	4	10	0.5	Boot Reg.	4	10
	Left 3	13.5	Reg. Boot	4	10	0.5	Boot Reg.	4	10
	Right 1	14	Reg. Boot	4	10	0.5	Boot Reg.	4	10
	Right 2	1.5	Reg. Boot	4	10	0.5	Boot Reg.	4	10

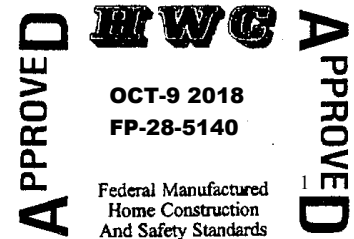
Floor B	Vertical	Material	Trunk H	Trunk W					
	First Floor	Aluminum	5	12					
	Direction	Distance(ft)	Boot Type	Boot H/D	Boot W	Boot L (ft)	Reg. Type	Register H	Register W
	Left 1	11.75	Reg. Boot	4	10	0.5	Boot Reg.	4	10
	Right 1	4.25	Reg. Boot	4	10	0.5	Boot Reg.	4	10
	Right 2	18.5	Reg. Boot	4	10	0.5	Boot Reg.	4	10
	Right 3	4.75	Reg. Boot	4	10	0.5	Boot Reg.	4	10
	Right 4	1.5	Reg. Boot	4	10	0.5	Boot Reg.	4	10

Duct Design Performance

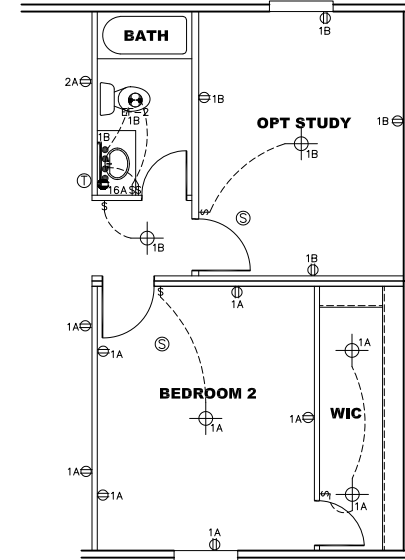
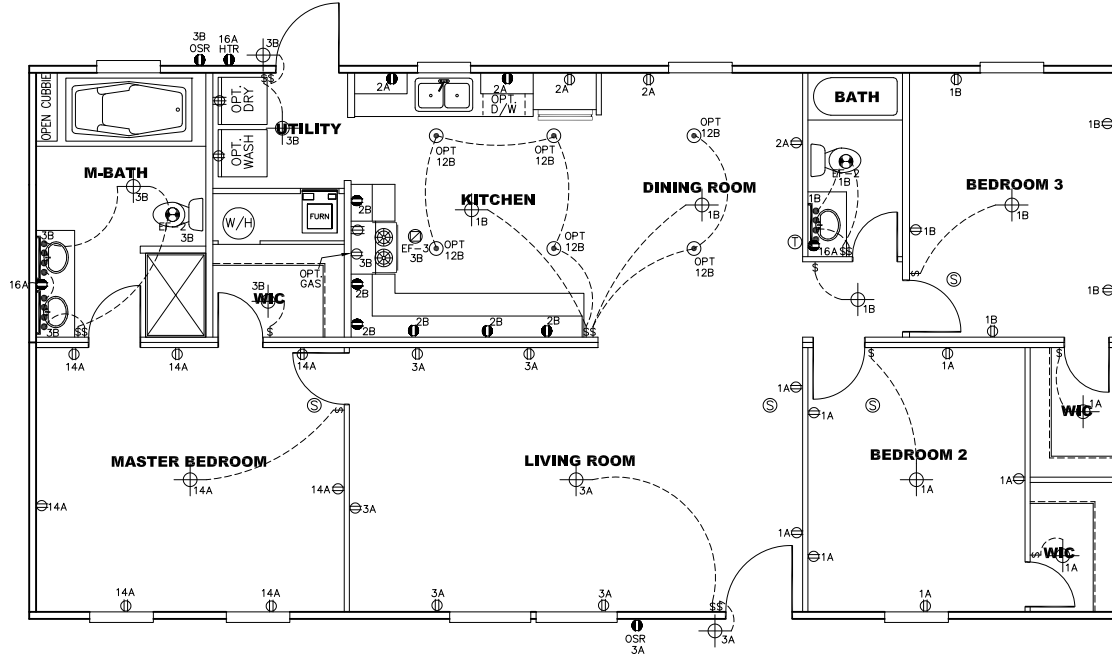
The refrigerated air cooling supply duct system including registers must be capable of handling at least 300 cfm per 10,000 Btuh with a static pressure no greater than 0.3 inches of water when measured at room temperature-HUD Manufactured Home Construction and Safety Standards, Part 3280.715 (a) (3) (ii)

Performance Calculated at a Static Pressure of 0.3 in. wc.

Air Flow Rate (SCFM)	1662	Duct Capacity (Btu/Hr)	55400
----------------------	------	------------------------	-------



CIRCUIT	CIRCUIT #	WIRE	BREAKER	CIRCUIT	CIRCUIT #	WIRE	BREAKER	CIRCUIT	CIRCUIT #	WIRE	BREAKER
LIGHT/RECF	1A,1B,3A,3B,14A,12B	14-2	15-SP	WATER HEATER	4A,6B	SEE NOTE #8		BATHROOM	16A	12-2	20-SP
KITCHEN	2A,2B	12-2	20-SP	RANGE	5B,7A	SEE NOTE #8		OPT G/DISP	9B	SEE NOTE #8	
WASHER	12A	12-2	20-SP	FURNACE	6A,8A,B,10A,B	SEE NOTE #8		OPT SPA/ WP/JAC	11A,B	SEE NOTE #8	
DRYER	5A,7B	SEE NOTE #8		OPT D/WASH	9A	SEE NOTE #8		FREEZER	N/A	SEE NOTE #8	
				SMOKE ALARM	4B	SEE NOTE #8					



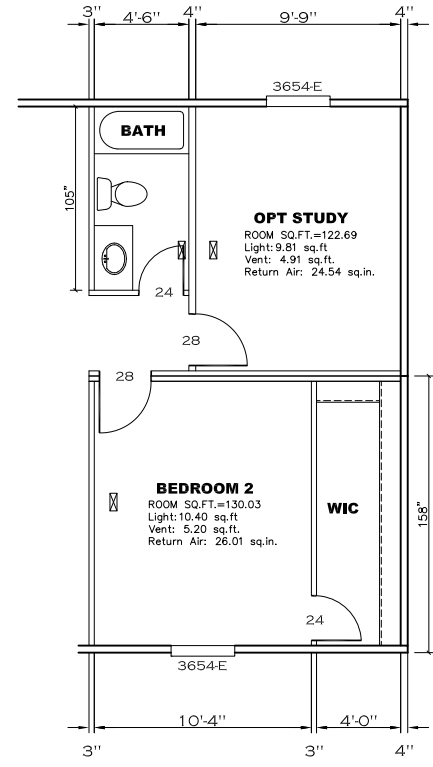
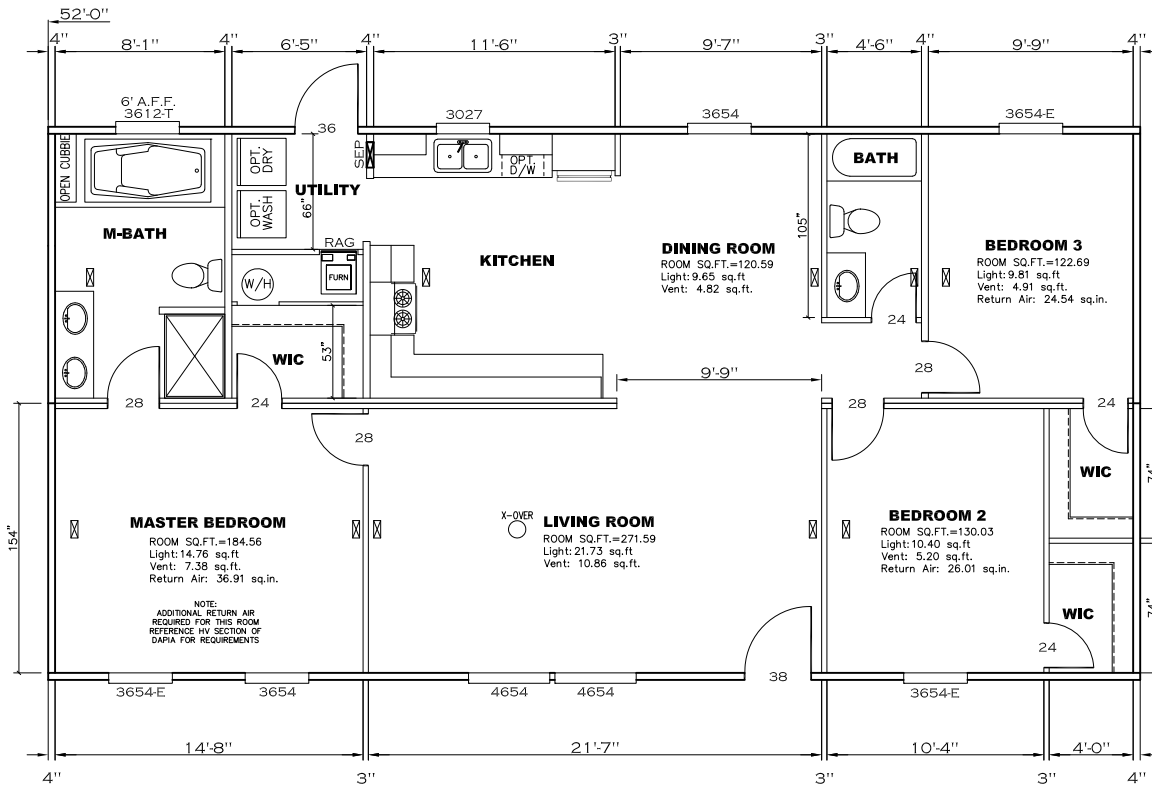
NOTES:

- 1) ALL CIRCUITS SHOWN ARE FOR REFERENCE AND MAY BE CHANGED BASED ON OPTIONAL COMPONENTS INSTALLED IN THE HOME.
- 2) REFER TO EL SECTION OF THE DAPIA FOR SYMBOL CHART.
- 3) INDICATES EITHER LIGHT OR RECEPTACLE MUST CONNECT TO SWITCH.
- 4) EF-1= 50 CFM EXHAUST FAN REQUIRED FOR THERMAL ZONE III. THERMAL ZONES I & II MAY USE FAN OR WINDOW W/1.5 SQ. FT. OPENABLE GLASS.
- 5) EF-2= 50 CFM EXHAUST FAN REQUIRED THERMAL ZONE I, II, AND III.
- 6) EF-3= 100 CFM RANGE EXHAUST FAN, SWITCH AT HOOD.
- 7) EF-4= WHOLE HOUSE VENTILATION PER REQUIREMENTS IN S-HV-10 & 10A OR M-HV-11 & 11A OF DAPIA.
- 8) REFER TO EL SECTION OF THE DAPIA OR THE MFG. INSTALLATION INSTRUCTIONS FOR PROPER WIRE SIZE AND BREAKER SIZE FOR SPECIFIC APPLIANCE AND MODEL BEING INSTALLED.
- 9) ALL SMOKE ALARMS TO BE LOCATED ON THE CEILING.
- 10) DIMENSIONS SHOWN ON PRINT ARE APPROXIMATE AND TO BE USED ONLY AS A GUIDELINE.

APPROVED **HWC** **APPROVED**
 REVISED
 30 APR 2019
 FP-28-5140
 Federal Manufactured
 Home Construction
 And Safety Standards

1369 SQ.FT. (STD PLAN "CONDITIONED")
 N/A SQ.FT. (W/OPT. PORCH/RECESS "CONDITIONED")

CMH MANUFACTURING	Model #: ULT28523A	Drawing #:
	Date: 10/8/18	Scale: NTS
Product Designer: E HARDWICK		28' X 52' Ultra Pro
ELECTRICAL PLAN-06		



APPROVED

APPROVED

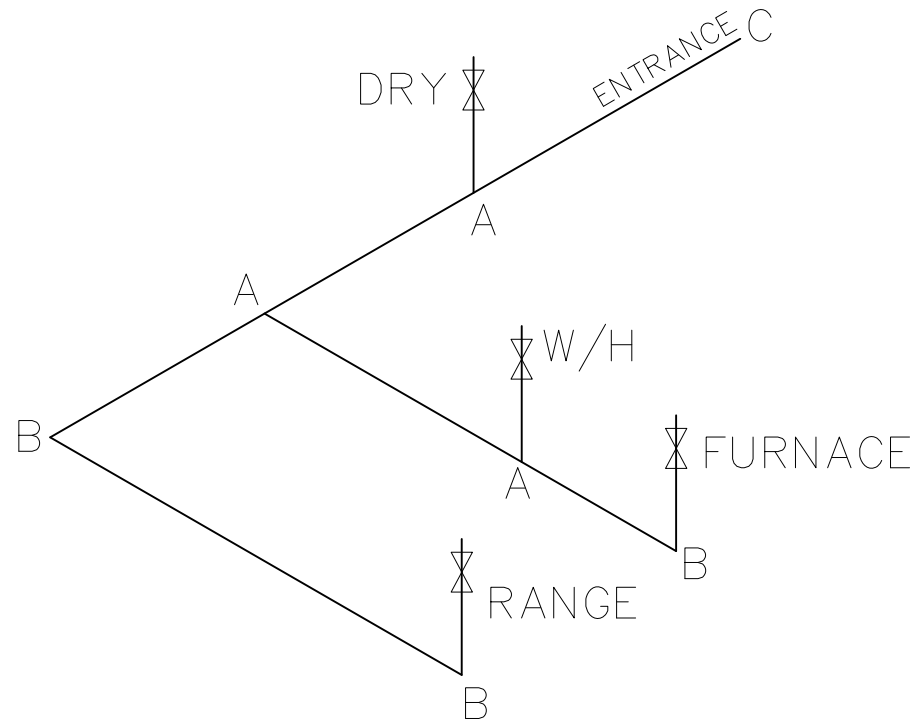
HWG
REVISED
 30 APR 2019
 FP-28-5140
 Federal Manufactured
 Home Construction
 And Safety Standards

1369 SQ.FT. (STD PLAN "CONDITIONED")
 N/A SQ.FT. (W/OPT. PORCH/RECESS "CONDITIONED")

CMH MANUFACTURING	Model #: ULT28523A	Drawing #:
	Date: 10/8/18	Scale: NTS 29m151
Product Designer: E HARDWICK		28' X 52' Ultra Pro
FLOOR PLAN		

LEGEND		APPLIANCE BTU'S RATINGS MAX. INPUT	
SYM	FITTINGS		
A	TEE	FURNACE	65,000 BTU'S
B	90 ELL	W/H	37,000 BTU'S
X	VALVE	RANGE	52,000 BTU'S
C	CAP	DRYER	22,000 BTU'S

MDL=20'



NOTES:

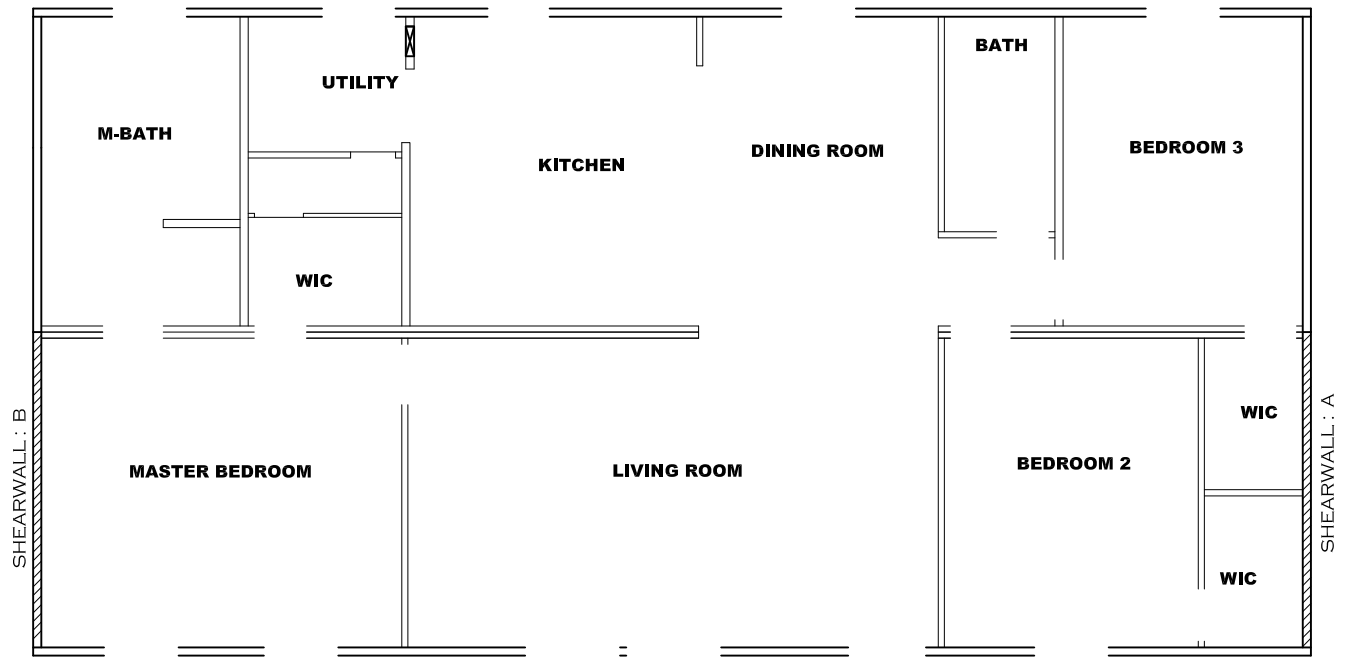
- 1) ALL PIPE IS 3/4" I.D.CAST (EXCEPT WHERE NOTED OTHERWISE)
- 2) MDL=MAX. DETERMINED LENGTH OF PIPE
- 3) FITTING MAY BE ADDED OR SUBTRACTED TO TRAVERSE VARIATIONS IN AXLE QUANTITY, PLACEMENT, AND FRAME TYPE.
- 4) INLET LOCATION MAY VARY TO STAY WITHIN MAX. DETERMINED LENGTH

APPROVED
HWG
APPROVED
OCT-9 2018
FP-28-5140
 Federal Manufactured
 Home Construction
 And Safety Standards

GAS LINE SIZE CHART	
	= 1"
	= 3/4"

1369 SQ.FT. (STD PLAN "CONDITIONED")
 N/A SQ.FT. (W/OPT. PORCH/RECESS "CONDITIONED")

CMH MANUFACTURING	Model #: ULT28523A	Drawing #:
	Date: 10/8/18	Scale: NTS
Product Designer: E HARDWICK		28' X 52' Ultra Pro
GAS LINE DETAIL		



Model # 29M151-8FT Minimum Joist Spacing 16 "

Box Width = 158 " Double wide No Offset Box
 Box Length = 52 ft. 95.5" 10" MIN. IBEAM No Clerestory
 No Skylights No Origami Dormer
 No Porches No Sunken Floor
 Joist Size = #2 sp 2x6 Lags 9Mx3" No Parapet Roof

Version R13.3

Wind Zone 1 Standard Roof (3/8" sheathing only with 15 gax 1.5" at 5"/10" oc. (197 plf) Chords: #3 2x4 plate w/ 2x4 rail spliced w/ 12" glue block. 96 inch sidewall
 Diaphragm Construction:

Shearwall	Dist./ Hitch	Length	PLF	# of Joists	Lags	Notes
A	0'	116"	162	2	2/1	
B	52'	116"	162	2	2/1	

Wind Zone 2 Standard Roof (3/8" sheathing only with 15 gax 1.5" at 5"/10" oc. (197 plf) Chords: #3 2x4 plate w/ 2x4 rail spliced w/ 12" glue block. 96 inch sidewall
 Diaphragm Construction:

Shearwall	Dist./ Hitch	Length	PLF	# of Joists	Lags	Notes
A	0'	Full	425	2	5/5	
B	52'	Full	425	2	5/5	

Wind Zone 3 Standard Roof (3/8" sheathing only with 15 gax 1.5" at 5"/10" oc. (197 plf) Chords: #3 2x4 plate w/ 2x4 rail spliced w/ 12" glue block. 96 inch sidewall
 Diaphragm Construction:

Shearwall	Dist./ Hitch	Length	PLF	# of Joists	Lags	Notes
A	0'	Full	425	2	5/5	
B	52'	Full	425	2	5/5	

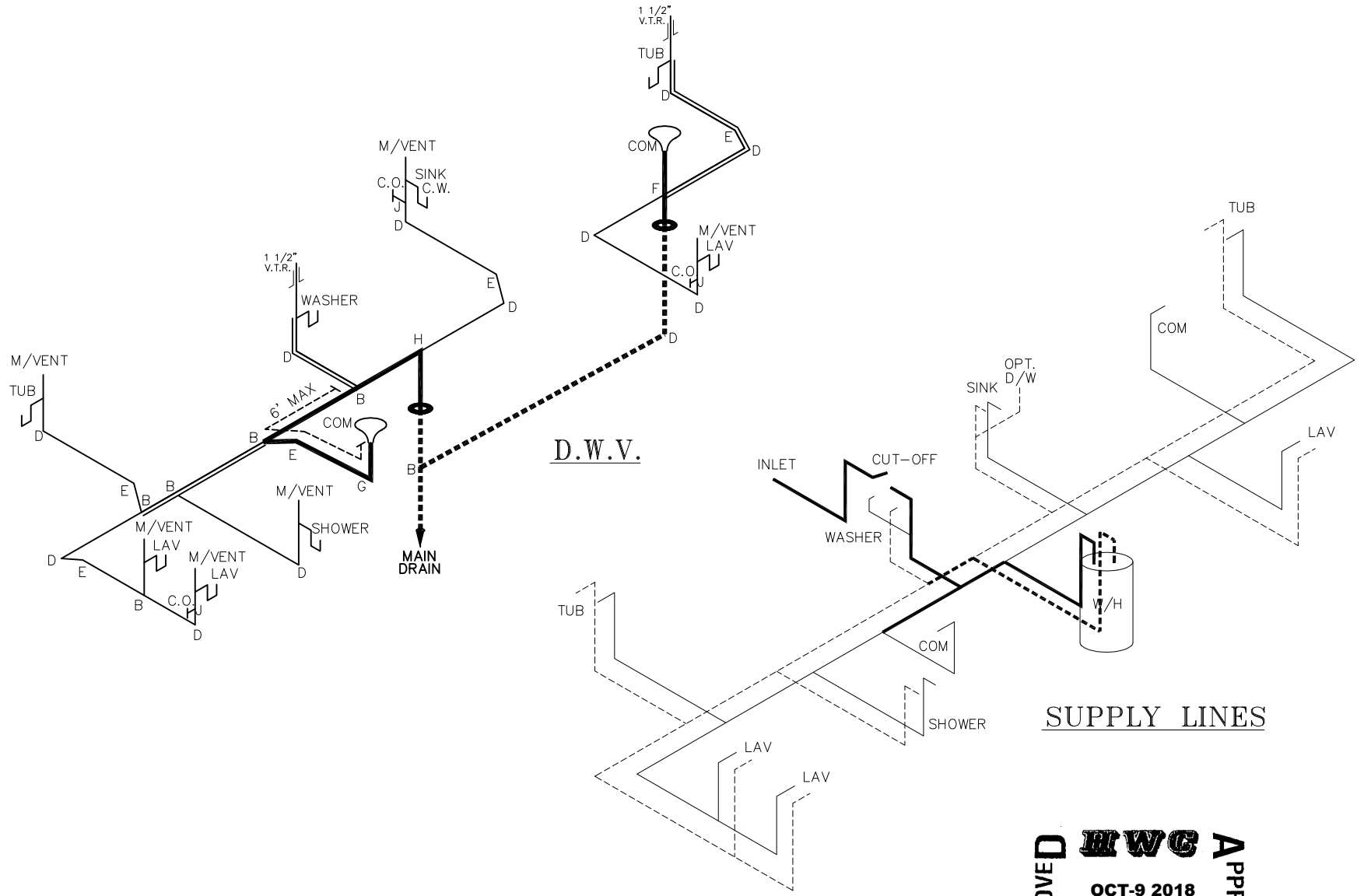
APPROVED **HWC** **APPROVED**
OCT-9 2018
FP-28-5140
 Federal Manufactured Home Construction And Safety Standards

1369 SQ.FT. (STD PLAN "CONDITIONED")
 N/A SQ.FT. (W/OPT. PORCH/RECESS "CONDITIONED")

CMH MANUFACTURING	Model #: ULT28523A	Drawing #:
	Date: 10/8/18	Scale: NTS 29m151
Product Designer: E HARDWICK		28' X 52' Ultra Pro
8' SHEARWALL		

NOTE: DASHED LINES INDICATE HOT WATER
SOLID LINES INDICATE COLD WATER

— = 3/4"
— = 1/2"



D.W.V.

SUPPLY LINES

LEGEND	
A	SHORT TURN T-Y
B	LONG TURN T-Y
C	1/4 BEND
D	LONG SWEEP 1/4 BEND
E	45 ELL
F	DBL. SANITARY TEE
G	4x3 CLOSET ELL
H	DOUBLE ELL
I	22 1/2\" ELL
J	45\" Y
K	LONG TURN STREET ELBOW
L	45 FTG ELL

APPROVED **HWG** **APPROVED**
OCT-9 2018
FP-28-5140
 Federal Manufactured
 Home Construction
 And Safety Standards

D.W.V. LINE SIZE CHART	
—	= 3"
—	= 2"
—	= 1 1/2"

1369 SQ.FT. (STD PLAN "CONDITIONED")
 N/A SQ.FT. (W/OPT. PORCH/RECESS "CONDITIONED")

CMH MANUFACTURING Product Designer: E HARDWICK	Model #: ULT28523A Date: 10/8/18 Scale: NTS	Drawing #: 29m151
	D.W.V. and Supply Lines	