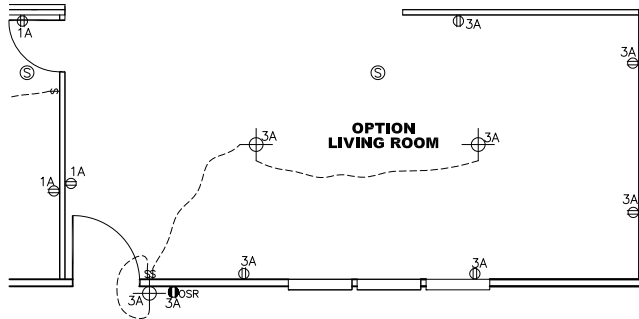
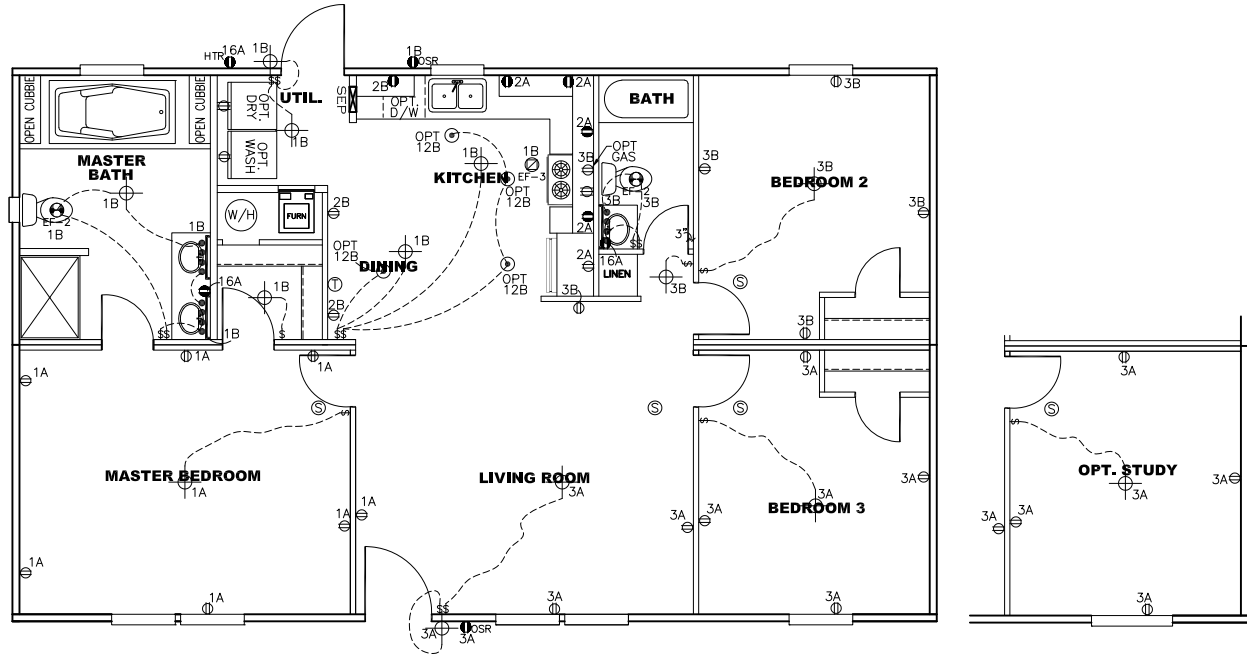


| CIRCUIT | CIRCUIT # | WIRE | BREAKER | CIRCUIT | CIRCUIT # | WIRE | BREAKER | CIRCUIT | CIRCUIT # | WIRE | BREAKER |
|-------------|-----------------|-------------|---------|--------------|---------------|-------------|---------|--------------------|-----------|-------------|--------------|
| LIGHT/RECEP | 1A,1B,3A,3B,12B | 14-2 | 15-SP | WATER HEATER | 4A,6B | SEE NOTE #8 | | BATHROOM | 16A | 12-2 | 20-SPEXTE |
| KITCHEN | 2A,2B | 12-2 | 20-SP | RANGE | 5B,7A | SEE NOTE #8 | | OPT G/DISP | 9B | SEE NOTE #8 | AS L SUPL |
| WASHER | 12A | 12-2 | 20-SP | FURNACE | 6A,8A,B,10A,B | SEE NOTE #8 | | OPT SPA/ WP/JAC | 11A,B | SEE NOTE #8 | |
| DRYER | 5A,7B | SEE NOTE #8 | | OPT D/WASH | 9A | SEE NOTE #8 | | FREEZER | N.A. | SEE NOTE #8 | |
| | | | | SMOKE ALARM | 4B | SEE NOTE #8 | | | | | |



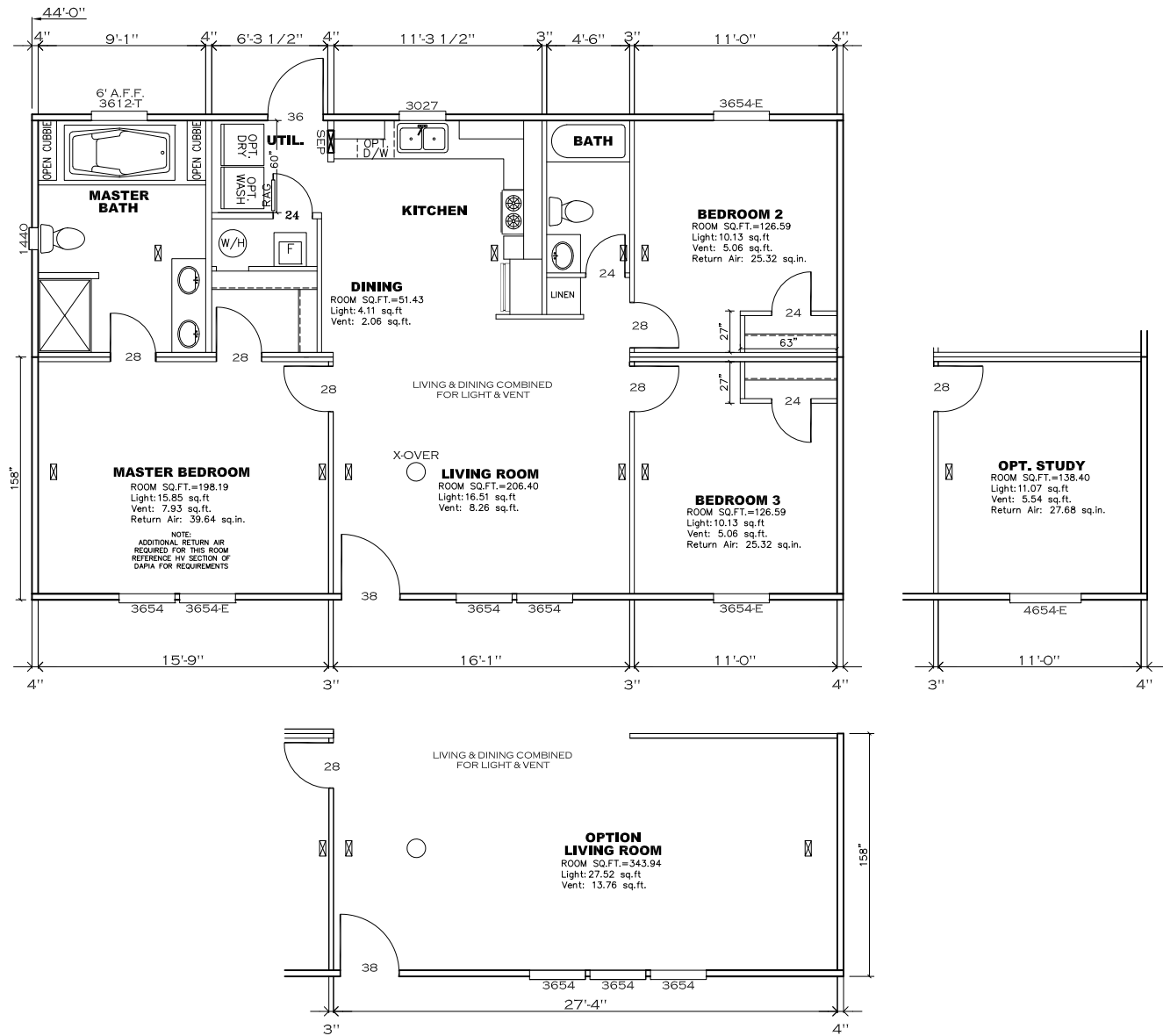
NOTES:

- ALL CIRCUITS SHOWN ARE FOR REFERENCE AND MAY BE CHANGED BASED ON OPTIONAL COMPONENTS INSTALLED IN THE HOME.
- REFER TO EL SECTION OF THE DAPIA FOR SYMBOL CHART.
- EITHER LIGHT OR RECEPTACLE MUST CONNECT TO SWITCH.
- EF-1= 50 CFM EXHAUST FAN REQUIRED FOR THERMAL ZONE III THERMAL ZONES I & II MAY USE FAN OR WINDOW W/1.5 SQ. FT. OPENABLE GLASS.
- EF-2= 50 CFM EXHAUST FAN REQUIRED THERMAL ZONE I, II, AND III.
- EF-3= 100 CFM RANGE EXHAUST FAN, SWITCH AT HOOD.
- EF-4= WHOLE HOUSE VENTILATION PER REQUIREMENTS IN S-HV-10 & 10A OR M-HV-11 & 11A OF DAPIA.
- REFER TO EL SECTION OF THE DAPIA OR THE MFG. INSTALLATION INSTRUCTIONS FOR PROPER WIRE SIZE AND BREAKER SIZE FOR SPECIFIC APPLIANCE AND MODEL BEING INSTALLED.
- ALL SMOKE ALARMS TO BE LOCATED ON THE CEILING.
- DIMENSIONS SHOWN ON PRINT ARE APPROXIMATE AND TO BE USED ONLY AS A GUIDELINE.

APPROVED **RWC** **APPROVED**
REVISED
 30 APR 2019
 FP-28-5139
 Federal Manufactured
 Home Construction
 And Safety Standards

1159 SQ.FT. (STD PLAN "CONDITIONED")
 N.A. SQ.FT. (W/OPT. PORCH/RECESS "CONDITIONED")

| | | |
|------------------------------|--------------------|----------------------|
| CMH MANUFACTURING | Model #: ULT28443A | Drawing #: |
| | Date: 1/08/18 | Scale: NTS 29M157 |
| Product Designer: E HARDWICK | | 28' x 44' Ultra Pro |
| ELECTRICAL PLAN-06 | | |

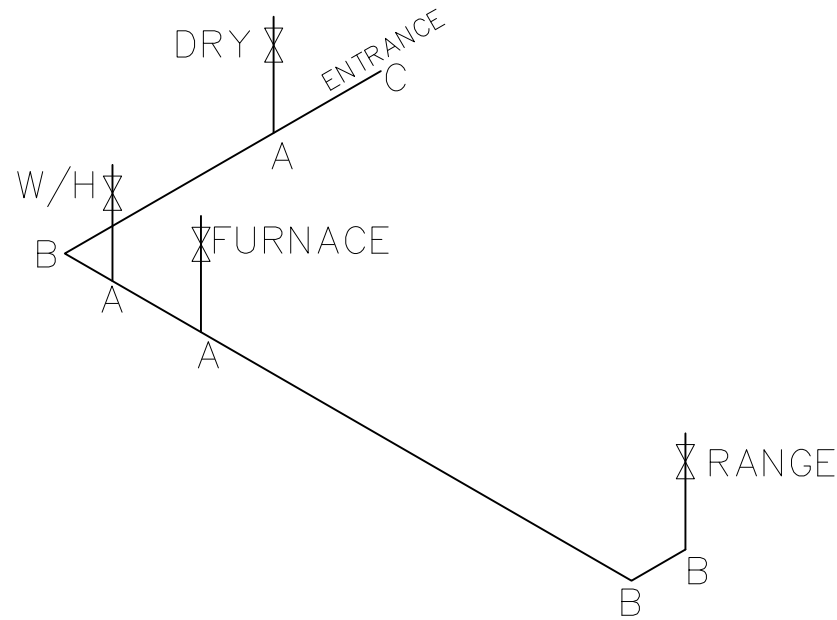


APPROVED
HWC
REVISED
SEPT 11 2019
FP-28-5139
Federal Manufactured
Home Construction
And Safety Standards
APPROVED

| | | | |
|--------------------------------------|--------------------|---|------------|
| 1159 SQ.FT. (STD PLAN "CONDITIONED") | | N.A. SQ.FT. (W/OPT. PORCH/RECESS "CONDITIONED") | |
| CMH MANUFACTURING | Model #: ULT28443A | Drawing #: 29M157 | |
| Product Designer: E HARDWICK | | Date: 10/6/16 | Scale: NTS |
| 28' x 44' Ultra Pro | | | |
| FLOOR PLAN | | | |

| LEGEND | | APPLIANCE BTU'S RATINGS MAX. INPUT | |
|--------|----------|------------------------------------|--------------|
| SYM | FITTINGS | | |
| A | TEE | FURNACE | 65,000 BTU'S |
| B | 90 ELL | W/H | 37,000 BTU'S |
| X | VALVE | RANGE | 52,000 BTU'S |
| C | CAP | DRYER | 22,000 BTU'S |

MDL=29'



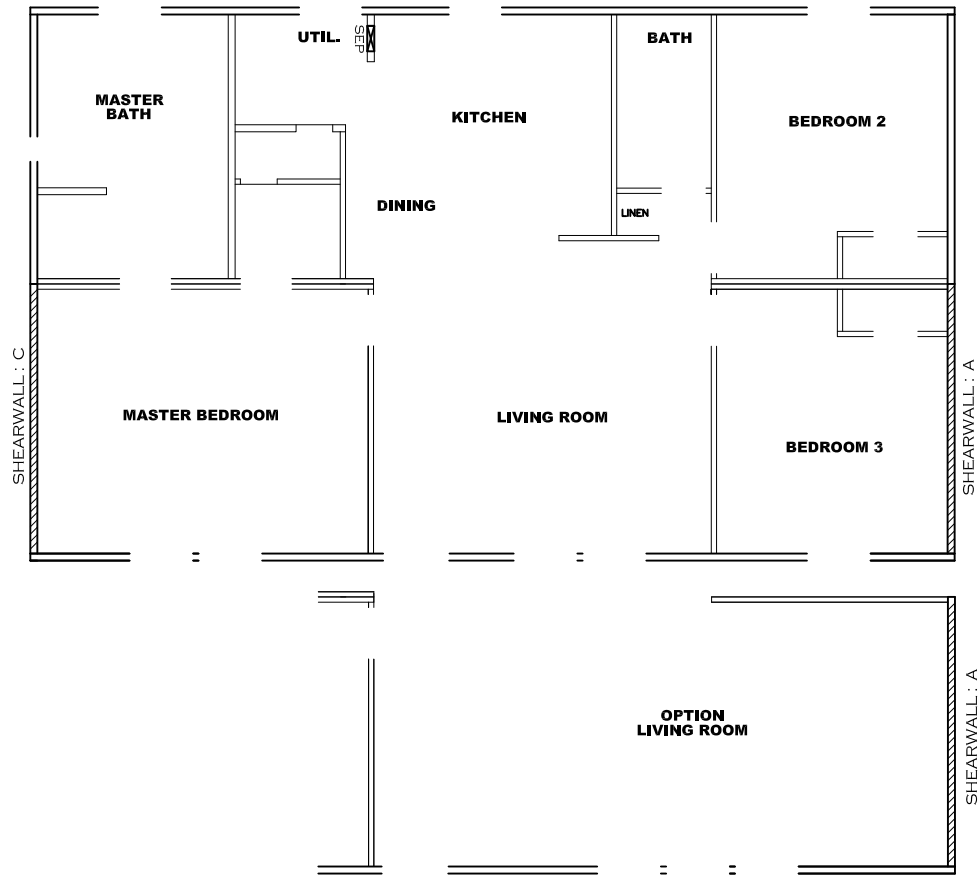
APPROVED **HWG** **APPROVED**
 09 OCT 2018
 FP-28-5139
 Federal Manufactured
 Home Construction
 And Safety Standards

NOTES:

- 1) ALL PIPE IS 3/4" I.D.CAST (EXCEPT WHERE NOTED OTHERWISE)
- 2) MDL=MAX. DETERMINED LENGTH OF PIPE
- 3) FITTING MAY BE ADDED OR SUBTRACTED TO TRAVERSE VARIATIONS IN AXLE QUANTITY, PLACEMENT, AND FRAME TYPE.
- 4) INLET LOCATION MAY VARY TO STAY WITHIN MAX. DETERMINED LENGTH

| GAS LINE SIZE CHART | |
|---------------------|--------|
| — | = 1" |
| — | = 3/4" |

| | |
|---|--|
| 1159 SQ.FT. (STD PLAN "CONDITIONED") | |
| N.A. SQ.FT. (W/OPT. PORCH/RECESS "CONDITIONED") | |
| CMH MANUFACTURING | Model #: ULT28443A Date: 10/07/18 Scale: NTS |
| Product Designer: E HARDWICK | Drawing #: 29M157 |
| 28' x 44' Ultra Pro | |
| GAS LINE DETAIL | |



Model # 29M157-8FT Minimum Joist Spacing 16" *
 Box Width = 158" Double wide No Offset Box
 Box Length = 44 ft. 95.5" 10" MIN. IBEAM No Clerestory
 No Skylights No Origami Dormer
 No Porches No Sunken Floor
 Joist Size = #2 sp 2x6 Lags 9Mx3" No Parapet Roof

Version R13.3

| Wind Zone 1 Standard Roof | | (3/8" sheathing only with 15 gax 1.5" at 5"/10" oc. (197 plf) Chords: #3 2x4 plate w/ 2x4 rail spliced w/ 12" glue block. | | | | 96 inch sidewall |
|---------------------------|--------------|---|-----|-------------|------|------------------|
| Shearwall | Dist./ Hitch | Length | PLF | # of Joists | Lags | Notes |
| A | 0' | 100" | 162 | 2 | 2/1 | |
| C | 44' | 100" | 162 | 2 | 2/1 | |
| Wind Zone 2 Standard Roof | | (3/8" sheathing only with 15 gax 1.5" at 5"/10" oc. (197 plf) Chords: #3 2x4 plate w/ 2x4 rail spliced w/ 12" glue block. | | | | 96 inch sidewall |
| Shearwall | Dist./ Hitch | Length | PLF | # of Joists | Lags | Notes |
| A | 0' | Full | 425 | 2 | 5/5 | |
| C | 44' | Full | 425 | 2 | 5/5 | |
| Wind Zone 3 Standard Roof | | (3/8" sheathing only with 15 gax 1.5" at 5"/10" oc. (197 plf) Chords: #3 2x4 plate w/ 2x4 rail spliced w/ 12" glue block. | | | | 96 inch sidewall |
| Shearwall | Dist./ Hitch | Length | PLF | # of Joists | Lags | Notes |
| A | 0' | Full | 425 | 2 | 5/5 | |
| C | 44' | Full | 425 | 2 | 5/5 | |

APPROVED **HWG** **APPROVED**

09 OCT 2018
 FP-28-5139

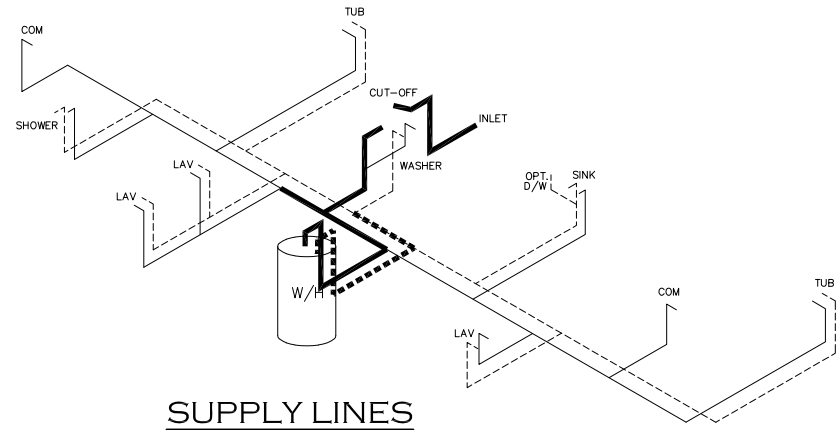
Federal Manufactured
 Home Construction
 And Safety Standards

1159 SQ.FT. (STD PLAN "CONDITIONED")
 N.A. SQ.FT. (W/OPT. PORCH/RECESS "CONDITIONED")

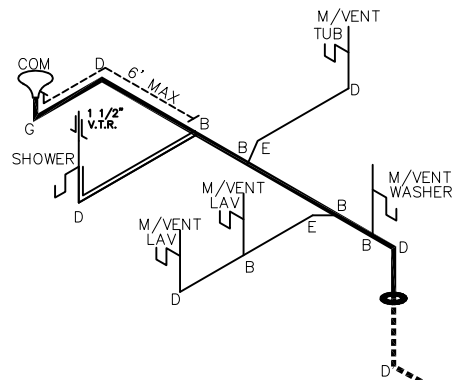
| | | |
|------------------------------|--------------------|---------------------|
| CMH MANUFACTURING | Model #: ULT28443A | Drawing #: |
| | Date: 10/6/18 | Scale: NTS 29M157 |
| Product Designer: E HARDWICK | | 28' x 44' Ultra Pro |
| 8' SHEARWALL | | |

NOTE:
DASHED LINES INDICATE HOT WATER
SOLID LINES INDICATE COLD WATER

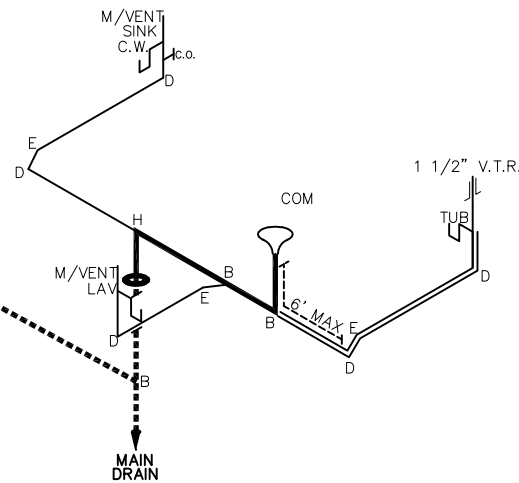
— = 3/4"
— = 1/2"



SUPPLY LINES



D.W.V. LINES



APPROVED **HWG** **APPROVED**
 09 OCT 2018
 FP-28-5139
 Federal Manufactured Home Construction And Safety Standards

| LEGEND | |
|--------|------------------------|
| A | SHORT TURN T-Y |
| B | LONG TURN T-Y |
| C | 1/4 BEND |
| D | LONG SWEEP 1/4 BEND |
| E | 45 ELL |
| F | DBL. SANITARY TEE |
| G | 4x3 CLOSET ELL |
| H | DOUBLE ELL |
| I | 22 1/2' ELL |
| J | 45' Y |
| K | LONG TURN STREET ELBOW |
| L | 45 FTG ELL |

| DWV LINE SIZE CHART | |
|---------------------|----------|
| — | = 3" |
| — | = 2" |
| — | = 1 1/2" |

| | |
|---|---|
| 1159 SQ.FT. (STD PLAN "CONDITIONED") | |
| N.A. SQ.FT. (W/OPT. PORCH/RECESS "CONDITIONED") | |
| CMH MANUFACTURING | Model #: ULT28443A Date: 10/07/08 Scale: NTS |
| Product Designer: E HARDWICK | Drawing #: 29M157 |
| 28' x 44' Ultra Pro | |
| D.W.V. and Supply Lines | |