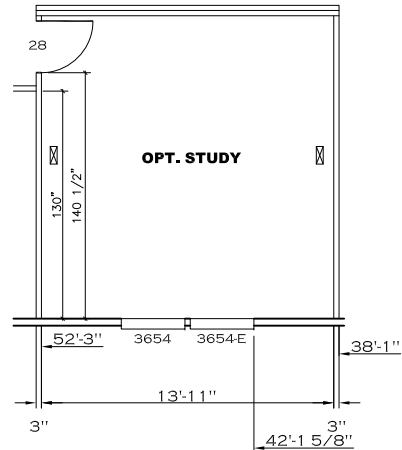


NOTE: ALL BEDROOMS ARE WITHIN 35' OF NEAREST EXIT DOOR

OPT 16' DORMER - 21'-1"
 **DIMENSIONS ARE FROM HITCH
 END TO RIGHT SIDE OF DORMER



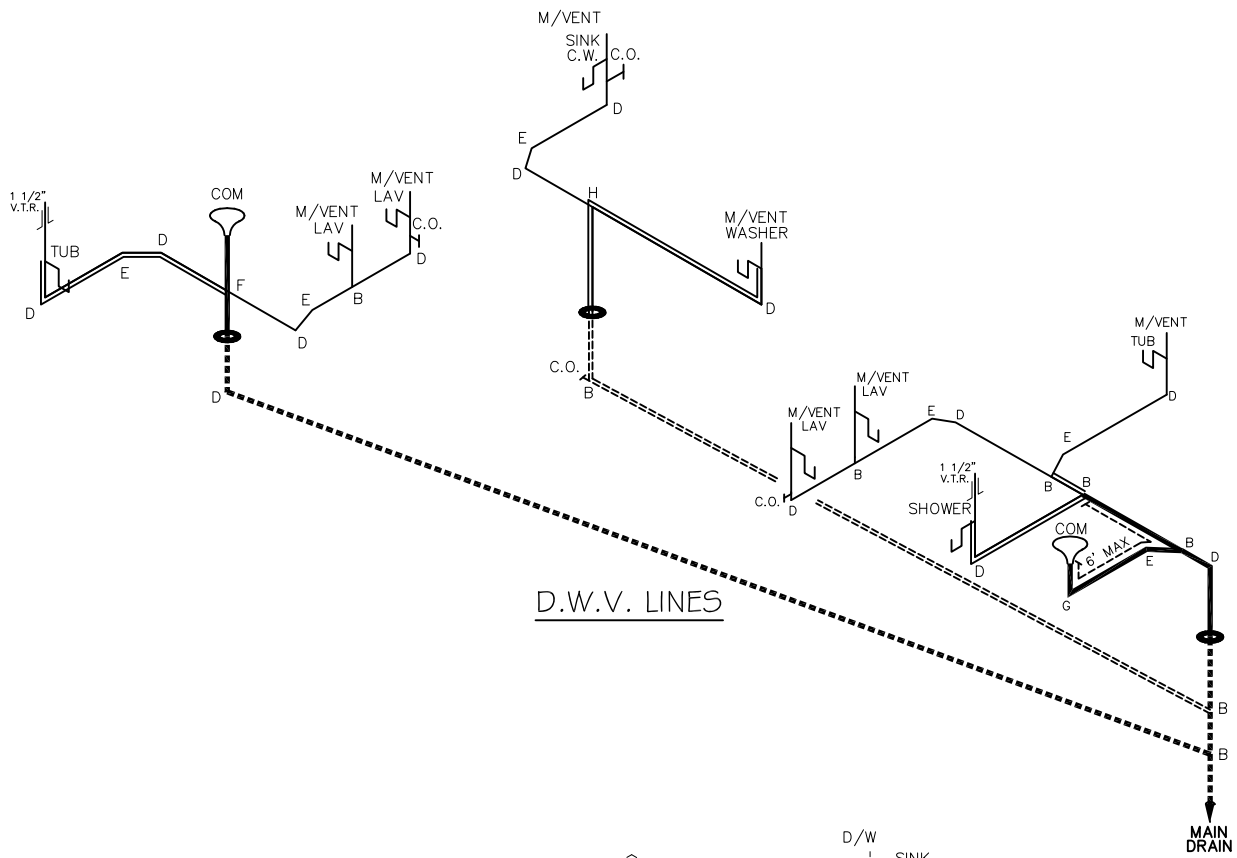
2280 SQ.FT. (STD PLAN "CONDITIONED")
 N/A SQ.FT. (W/OPT. PORCH/RECESS "CONDITIONED")

CMH MANUFACTURING	Model #: UXL327G4A	Drawing #:
	Date: 9/14/22	Scale: N/A
Product Designer: E HARDWICK		32 X 76 ULTRA EXCEL
FLOOR PLAN		REVISION ECR-3019 10/13/22 EH

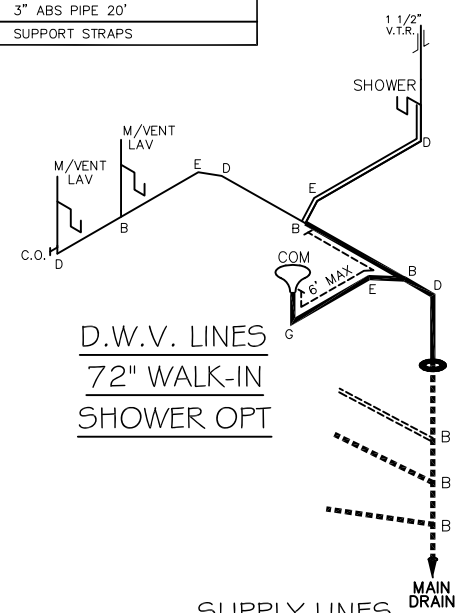
SHIP LOOSE CHART	
PARTS SHIPPED LOOSE W/HOME (TO BE INSTALLED IN FIELD)	
QUANTITY	DESCRIPTION
1	(B) 3" LONG TURN T-Y
1	(D) 3" LONG SWEEP 1/4 BEND
1	(B) 3x2x3 LONG TURN T-Y
1	(B) 2" LONG TURN T-Y
1	2" CLEAN OUT
1	3" COUPLING
1	APPROVED CEMENT
2	1 1/2" ABS PIPE 20'
2	3" ABS PIPE 20'
varies	SUPPORT STRAPS

NOTE: DASHED LINES INDICATE HOT WATER
SOLID LINES INDICATE COLD WATER

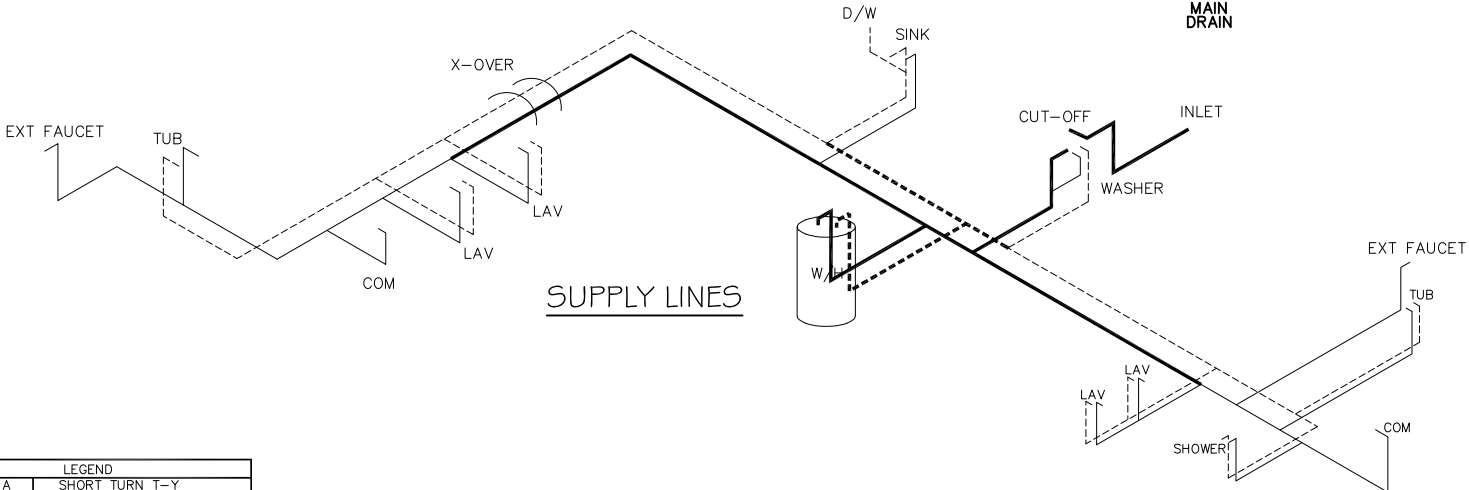
———— = 3/4"
———— = 1/2"



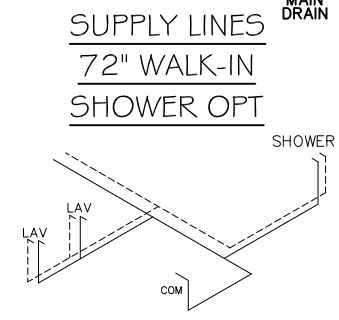
D.W.V. LINES



D.W.V. LINES
72\"/>



SUPPLY LINES



SUPPLY LINES
72\"/>

LEGEND	
A	SHORT TURN T-Y
B	LONG TURN T-Y
C	1/4 BEND
D	LONG SWEEP 1/4 BEND
E	45° ELL
F	DBL. SANITARY TEE
G	4x3 CLOSET ELL
H	DOUBLE ELL
I	22 1/2° ELL
J	45° Y
K	LONG TURN STREET ELBOW
L	45° FTC ELL

D.W.V. LINE SIZE CHART	
————	= 3"
————	= 2"
————	= 1 1/2"

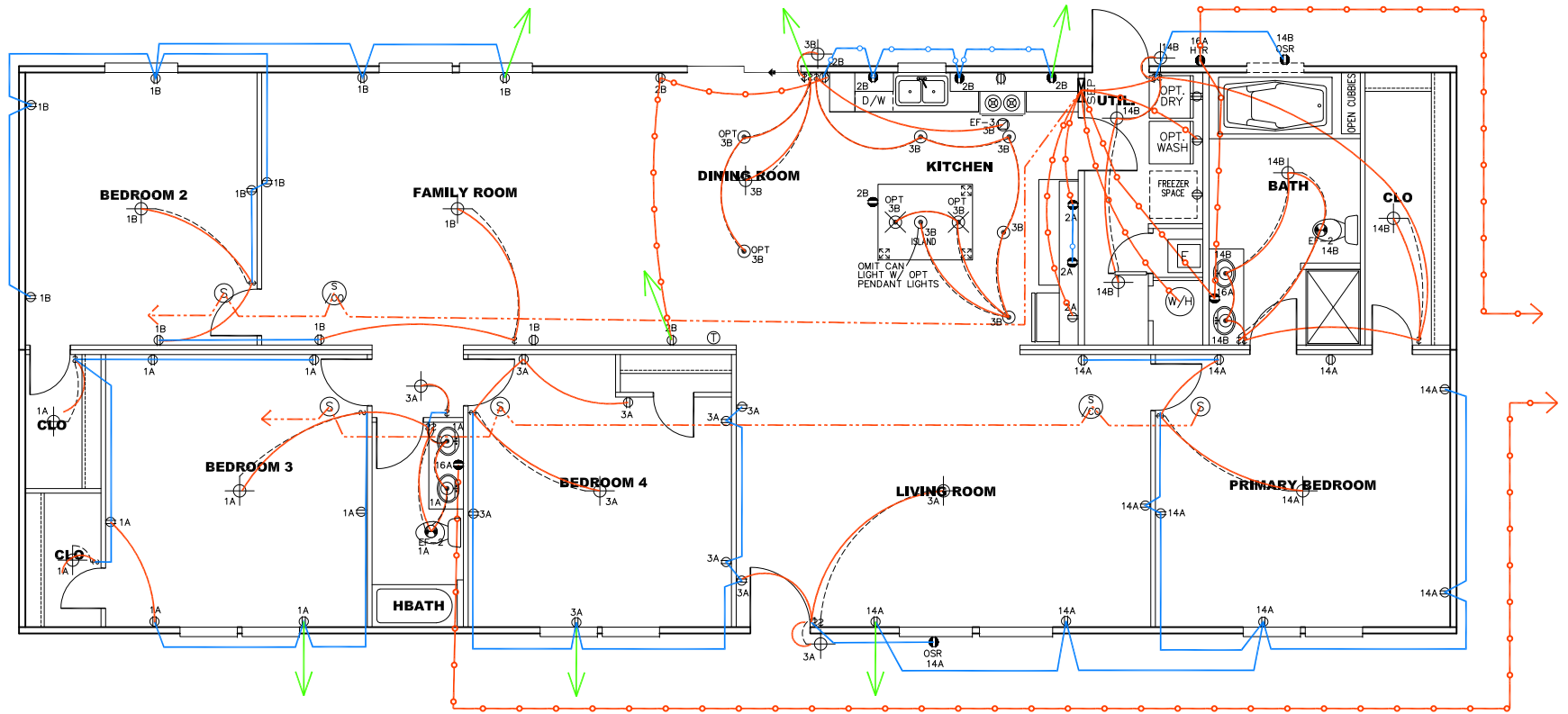
2280 SQ.FT. (STD PLAN "CONDITIONED")
N/A SQ.FT. (W/OPT. PORCH/RECESS "CONDITIONED")

CMH MANUFACTURING Product Designer: E HARDWICK	Model #: UXL32764A	Drawing #: 29M193
	Date: 9/14/22	Scale: N/A
32 X 76 ULTRA EXCEL		
D.W.V. and Supply Lines		REVISION ECR-3019 10/13/22 EH

NOTES:

- ALL CIRCUITS SHOWN ARE FOR REFERENCE AND MAY BE CHANGED BASED ON OPTIONAL COMPONENTS INSTALLED IN THE HOME.
- REFER TO DAPIA MANUAL FOR SYMBOL CHART.
- EITHER LIGHT OR RECEPTACLE MUST CONNECT TO SWITCH.
- EF-1= 50 CFM EXHAUST FAN REQUIRED FOR THERMAL ZONE III THERMAL ZONES I & II MAY USE FAN OR WINDOW W/1.5 SQ. FT. OPENABLE GLASS.
- EF-2= 50 CFM EXHAUST FAN REQUIRED THERMAL ZONE I, II, AND III.
- EF-3= 100 CFM RANGE EXHAUST FAN, SWITCH AT HOOD.
- EF-4= WHOLE HOUSE VENTILATION REQUIREMENTS PER DAPIA MANUAL.
- REFER TO DAPIA MANUAL OR THE MFG. INSTALLATION INSTRUCTIONS FOR PROPER WIRE SIZE AND BREAKER SIZE FOR SPECIFIC APPLIANCE AND MODEL BEING INSTALLED.
- ALL SMOKE ALARMS TO BE LOCATED ON THE CEILING.
- CARBON MONOXIDE ALARMS ARE ONLY REQUIRED WHEN HOME HAS EITHER FUEL BURNING APPLIANCES, IS GARAGE READY OR IS BASEMENT READY. REFERENCE DAPIA MANUAL FOR ADDITIONAL INFORMATION.
- DIMENSIONS SHOWN ON PRINT ARE APPROXIMATE AND TO BE USED ONLY AS A GUIDELINE.

CIRCUIT	CIRCUIT #	WIRE	BREAKER	CIRCUIT	CIRCUIT #	WIRE	BREAKER	CIRCUIT	CIRCUIT #	WIRE	BREAKER
LIGHT/RECEP	1A,B,3A,B,14A,B	14-2	15-SP	WATER HEATER	4A,6B	SEE NOTE #8		BATHROOM	16 A	12-2	20-SP
KITCHEN	2A,2B	12-2	20-SP	RANGE	5B,7A	SEE NOTE #8		OPT. C/DISP	9B	SEE NOTE #8	
WASHER	12A	12-2	20-SP	FURNACE	6A,8A,B,10A,B	SEE NOTE #8		OPT. SP.1/ WP/JAC	11A,B	SEE NOTE #8	
DRYER	5A,7B	SEE NOTE #8		OPT D/WASH	9A	SEE NOTE #8		FREEZER	1.3A	SEE NOTE #8	
				SMOKE DECT.	4B	SEE NOTE #8					



- = 12-2 WIRE (WALL)
- = 14-2 WIRE (WALL)
- = 12-2 WIRE (CEILING)
- = 14-2 WIRE (CEILING)
- - - = 14-3 WIRE (CEILING)
- = FURNACE/RANGE/DRYER (FLOOR)
- = CROSSOVER

2280 SQ.FT. (STD PLAN "CONDITIONED")
 N/A SQ.FT. (W/OPT. PORCH/RECESS "CONDITIONED")

CMH MANUFACTURING	Model #: UXL32764A	Drawing #:
	Date: 9/14/22	Scale: N/A
Product Designer: E HARDWICK		29M193
ELECTRICAL PLAN-06		32 X 76 ULTRA EXCEL
REVISION		ECR- 3019 10/13/22 EH