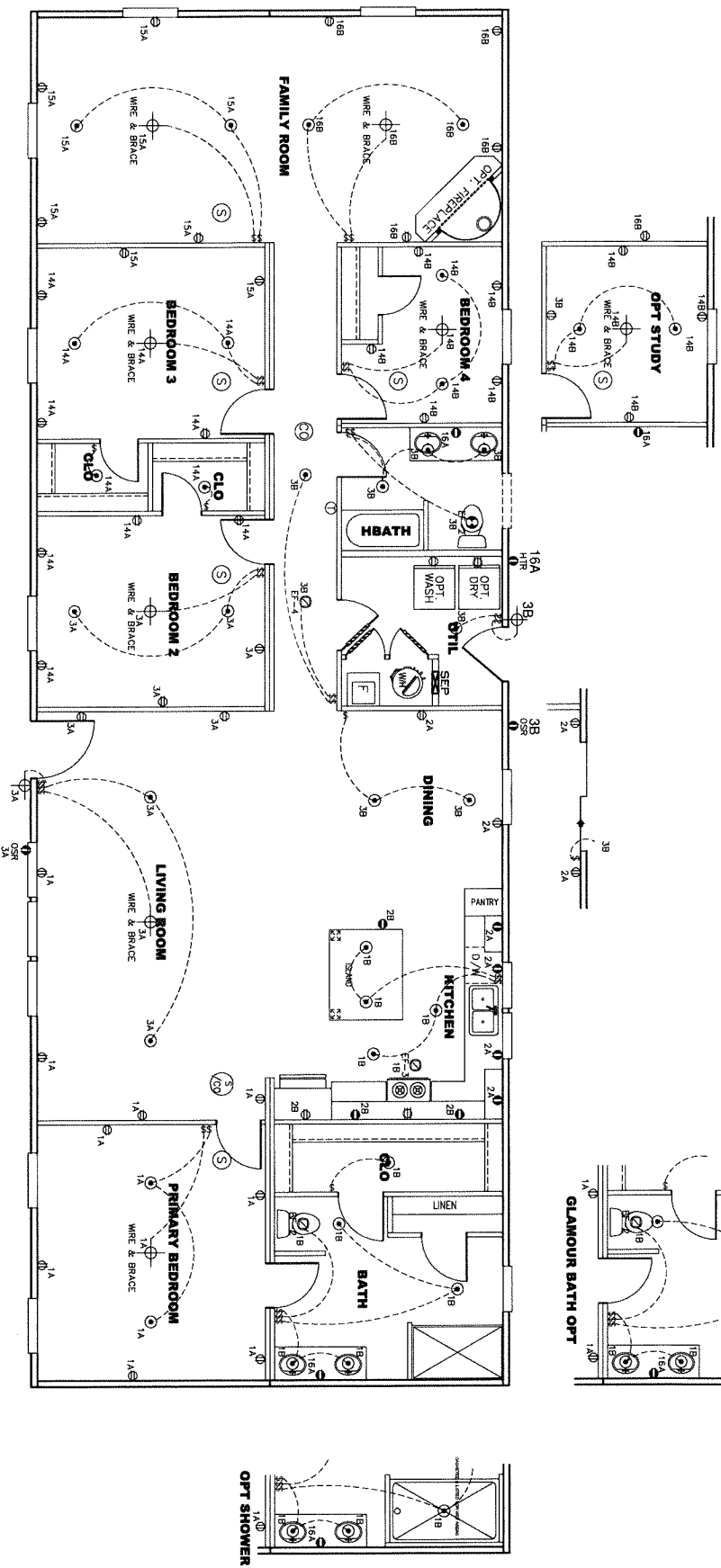


CIRCUIT	CIRCUIT #	WIRE	BREAKER	CIRCUIT	CIRCUIT #	WIRE	BREAKER	CIRCUIT	CIRCUIT #	WIRE	BREAKER
LIGHT/RECP	14.1,14.2,14.3,14.4,14.5,14.6	14-2	15-SP	WATER HEATER	44.6B	SEE NOTE #8	BATHROOM	16A	12-2	20-SP	
KITCHEN/OWNK	2A, 2B	12-2	20-SP	RANGE	5A, 7A	SEE NOTE #8	OPT 6/DSP	9B	SEE NOTE #8		
WASHER	12A	12-2	20-SP	PER GAS VALVE	15B,10A,B	SEE NOTE #8	OPT 5/W	11A,B	SEE NOTE #8		
DRYER	5A, 7B	SEE NOTE #8		FURNACE	6A, 8A, 9, 10A, B	SEE NOTE #8	FREEZER	13A	SEE NOTE #8		
				OPT 1/WASH	9A	SEE NOTE #8					
				SMOKE ALARM	4B	SEE NOTE #8					



- NOTES:
1. ALL CIRCUITS SHOWN ARE FOR REFERENCE AND MAY BE CHANGED BASED ON OPTIONAL COMPONENTS INSTALLED IN THE HOME.
 2. REFER TO DAPPA MANUAL FOR SYMBOL CHART.
 3. EITHER LIGHT OR RECEPTACLE MUST CONNECT TO SWITCH.
 4. EF-1= 50 CFM EXHAUST FAN REQUIRED FOR THERMAL ZONE III. THERMAL ZONES I & II MAY USE FAN OR WINDOW W/1.5 SO. FT. OPERABLE GLASS.
 5. EF-2= 50 CFM EXHAUST FAN REQUIRED THERMAL ZONE I, II, AND III.
 6. EF-3= 100 CFM RANGE EXHAUST FAN, SWITCH AT HOOD.
 7. EF-4= WHOLE HOUSE VENTILATION REQUIREMENTS PER DAPPA MANUAL.
 8. REFER TO DAPPA MANUAL OR THE MFG. INSTALLATION INSTRUCTIONS FOR PROPER WIRE SIZE AND BREAKER SIZE FOR SPECIFIC APPLIANCE AND MODEL BEING INSTALLED.
 9. ALL SMOKE ALARMS TO BE LOCATED ON THE CEILING.
 10. CARBON MONOXIDE ALARMS ARE ONLY REQUIRED WHEN HOME HAS EITHER FUEL BURNING APPLIANCES, IS GARAGE READY OR IS BASEMENT READY. REFERENCE DAPPA MANUAL FOR ADDITIONAL INFORMATION.
 11. DIMENSIONS SHOWN ON PRINT ARE APPROXIMATE AND TO BE USED ONLY AS A GUIDELINE.

APPROVED
REVISED
 10 JULY 2023
 FP-28-5498
APPROVED

Federal Manufactured Home Construction And Safety Standards

Product Designer: E HARDWICK

Model #: UBX287G4B Drawing #: 29m188

Direct: 1/30/21 Scale: NTS

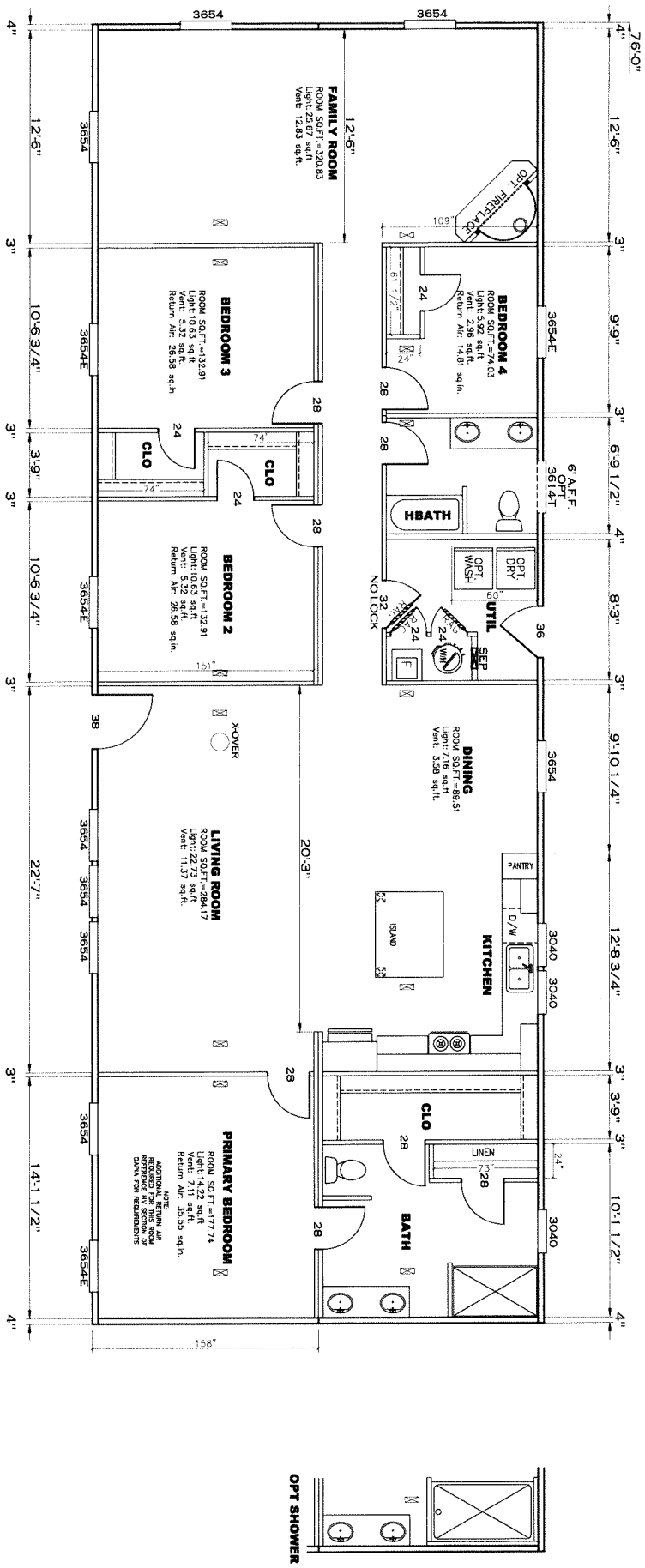
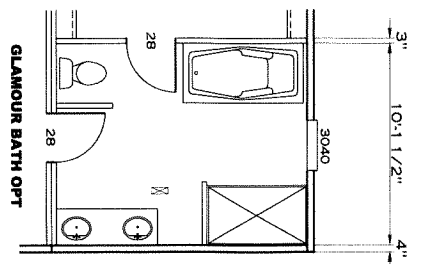
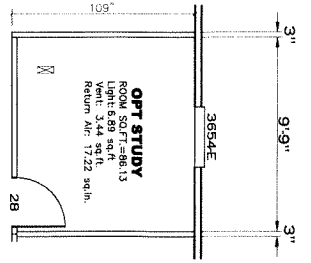
28 X 76 Ultra Breeze Excel 76

REVISION ECR-4201

6/30/23

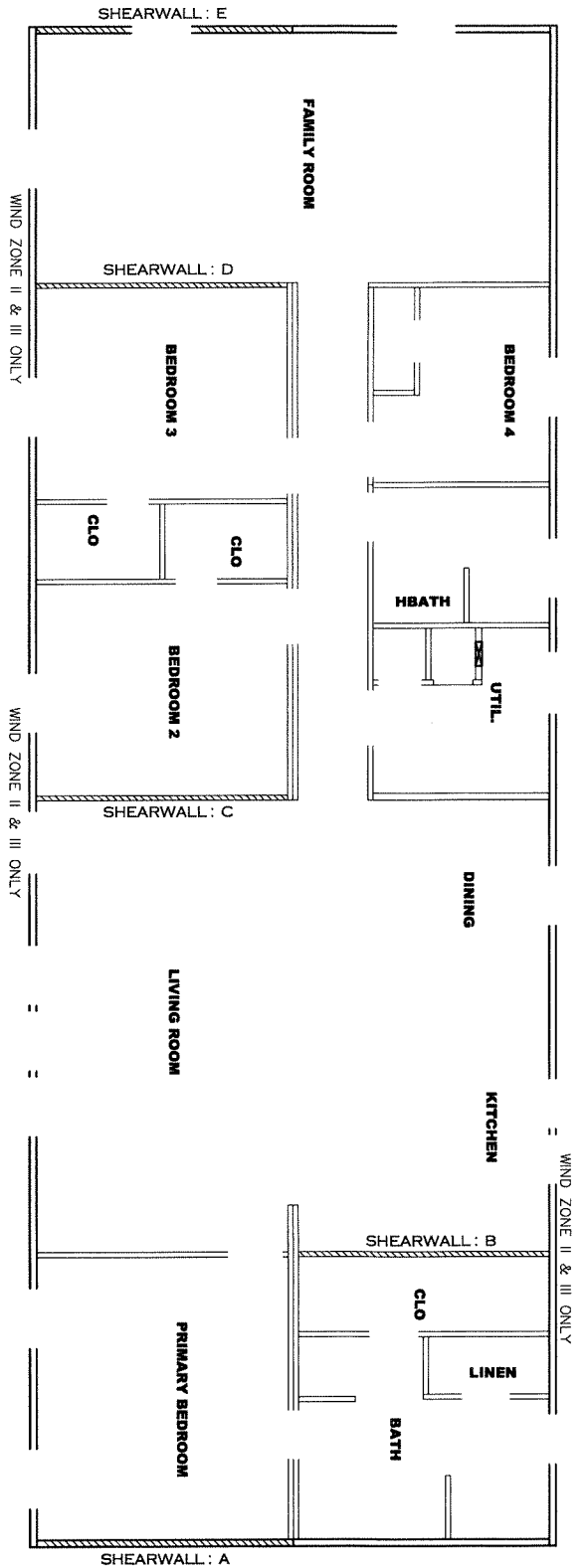
2001 SQ.FT. (STD PLAN "CONDITIONED")
 N/A SQ.FT. (W/OPT. PORCH/RECESS "CONDITIONED")

ELECTRICAL PLAN-06



APPROVED
REVISED
 10 JULY 2023
 FP-28-5498
APPROVED

2001 SQ.FT. (STD PLAN "CONDITIONED")	
N/A SQ.FT. (W/OPT. PORCH/RECESS "CONDITIONED")	
Product Designer: E HARDWICK	Model #: UBX287G4B
MANUFACTURING	Date: 1/20/21 Scale: N15
28 X 76 Ultra Breeze Excel 76	29m 89
FLOOR PLAN	5 REVISION ECR-1201
	6/30/23 EH



Model # 29m188-8ft
 Box Width = 158 " Double wide
 Box Length = 76 ft. 95.5" 10" MIN. I.BEAM No Clearestory
 No Skylights No Organni Dormer
 No Porches No Sunken Floor
 Joist Size = #2 spt 2x6 Lags 9Mx3"

Minimum Joist Spacing 16 "

Version R13.8

Wind Zone 1 Standard Roof (3/8" sheathing only with 15 gax 1.5" at 5'7/10" oc. (197 p/f) Chords: #3 2x4 plate w/ 2x4 rail 96 inch sidewall

Diaphragm Construction:	Length	PLF	# of Joists	Lags	Notes
Shearwall Dist./Hicfl	Full	425	2	5/5	SW1/SW2
A	0'	Full	425	2	5/5
E	76'	117.625"	4	4/4	Split Shearwall 60.625/57

Wind Zone 2 Standard Roof (3/8" sheathing only with 15 gax 1.5" at 5'7/10" oc. (197 p/f) Chords: #3 2x4 plate w/ 2x4 rail 96 inch sidewall

Diaphragm Construction:	Length	PLF	# of Joists	Lags	Notes
Shearwall Dist./Hicfl	Full	425	2	5/5	SW1/SW2
A	0'	88"	2	1/1	
B	14.58'	112"	2	3/1	
C	37.41'	Full	2	2/2	
D	63.04'	112"	2	3/1	
E	76'	117.625"	2	2/2	Split Shearwall 60.625/57

Wind Zone 3 Standard Roof (3/8" sheathing only with 15 gax 1.5" at 5'7/10" oc. (197 p/f) Chords: #3 2x4 plate w/ 2x4 rail 96 inch sidewall

Diaphragm Construction:	Length	PLF	# of Joists	Lags	Notes
Shearwall Dist./Hicfl	Full	425	2	5/5	SW1/SW2
A	0'	104"	2	2/1	
B	14.58'	Full	2	2/2	
C	37.41'	Full	2	3/3	
D	63.04'	Full	2	2/2	
E	76'	117.625"	2	2/2	Split Shearwall 60.625/57

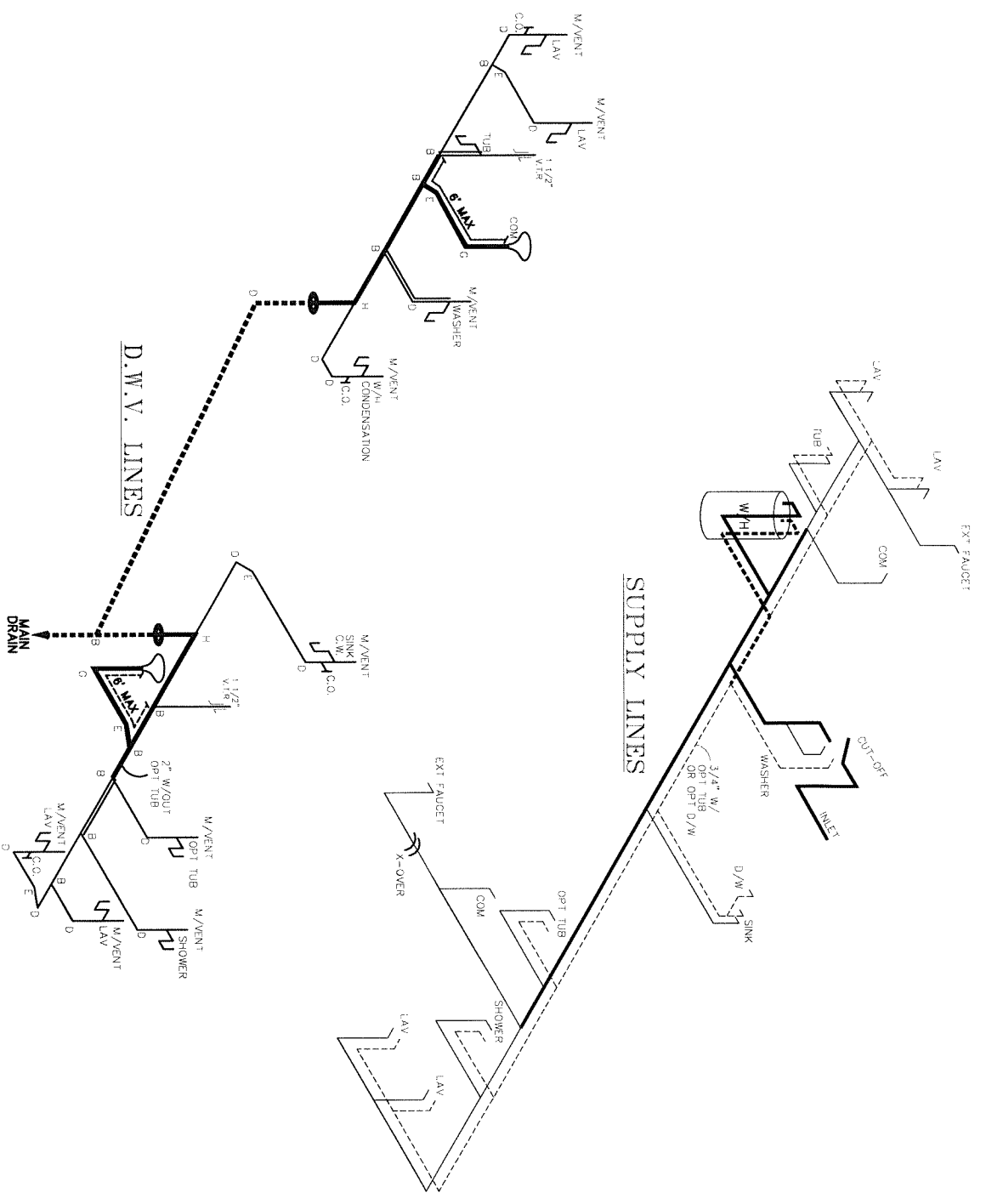
Wind Zone 3 Standard Roof (3/8" sheathing only with 15 gax 1.5" at 5'7/10" oc. (197 p/f) Chords: #3 2x4 plate w/ 2x4 rail 96 inch sidewall

Diaphragm Construction:	Length	PLF	# of Joists	Lags	Notes
Shearwall Dist./Hicfl	Full	425	2	5/5	SW1/SW2
A	0'	104"	2	2/1	
B	14.58'	Full	2	2/2	
C	37.41'	Full	2	3/3	
D	63.04'	Full	2	2/2	
E	76'	117.625"	2	2/2	Split Shearwall 60.625/57

APPROVED **FWG** **APPROVED**
 06 DEC 2021
 FP-28-5498
 Federal Manufactured Home Construction And Safety Standards

2001 SQ.FT. (STD PLAN "CONDITIONED")
 N/A SQ.FT. (W/OPT. PORCH/RECESS "CONDITIONED")
CMH MANUFACTURING
 Model #: UBX287G4B Drawing #: 29m188
 Date: 1/30/21 Scale: NTS
 Product Designer: E HARDWICK
8' SHEARWALL

NOTE:
 DASHED LINES INDICATE HOT WATER
 SOLID LINES INDICATE COLD WATER



LEGEND

A	SHORT TURN T-Y
B	LONG TURN T-Y
C	1/4 BEND
D	LONG SWEEP 1/4 BEND
E	90° ELBOW
F	45° ELBOW
G	45° ELBOW
H	DOUBLE ELBOW
I	22 1/2° ELBOW
J	45° ELBOW
K	LONG TURN STREET ELBOW

DWV LINE SIZE CHART

3"	3"
2"	2"
1 1/2"	1 1/2"

APPROVED
 REVISED
 10 JULY 2023
 FP-28-5498
 Federal Manufacture
 Home Construction
 And Safety Standards

2001 SQ.FT. (STD PLAN "CONDITIONED")	
N/A SQ.FT. (W/OPT. PORCH/RECESS "CONDITIONED")	
Product Designer: E HARDWICK	Model #: UBX28764B
MANUFACTURING	Date: 1/30/21
28 X 76 Ultra Breeze Excel 76	Scale: N15
D.W.V. and Supply Lines	Revision: ECR-4301
	Date: 6/30/23