

- NOTES:
1. ALL CIRCUITS SHOWN ARE FOR REFERENCE AND MAY BE CHANGED BASED ON OPTIONAL COMPONENTS INSTALLED IN THE HOME.
 2. REFER TO DAPIA MANUAL FOR SYMBOL CHART.
 3. EITHER LIGHT OR RECEPTACLE MUST CONNECT TO SWITCH.
 4. EF-1= 50 CFM EXHAUST FAN REQUIRED FOR THERMAL ZONE III THERMAL ZONES I & II MAY USE FAN OR WINDOW W/1.5 SQ. FT. OPENABLE GLASS.
 5. EF-2= 50 CFM EXHAUST FAN REQUIRED THERMAL ZONE I, II, AND III.
 6. EF-3= 100 CFM RANGE EXHAUST FAN, SWITCH AT HOOD.
 7. EF-4= WHOLE HOUSE VENTILATION REQUIREMENTS PER DAPIA MANUAL.
 8. REFER TO DAPIA MANUAL OR THE MFG. INSTALLATION INSTRUCTIONS FOR PROPER WIRE SIZE AND BREAKER SIZE FOR SPECIFIC APPLIANCE AND MODEL BEING INSTALLED.
 9. ALL SMOKE ALARMS TO BE LOCATED ON THE CEILING.
 10. CARBON MONOXIDE ALARMS ARE ONLY REQUIRED WHEN HOME HAS EITHER FUEL BURNING APPLIANCES, IS GARAGE READY OR IS BASEMENT READY. REFERENCE DAPIA MANUAL FOR ADDITIONAL INFORMATION.
 11. DIMENSIONS SHOWN ON PRINT ARE APPROXIMATE AND TO BE USED ONLY AS A GUIDELINE.

APPROVED **HWC** **APPROVED**

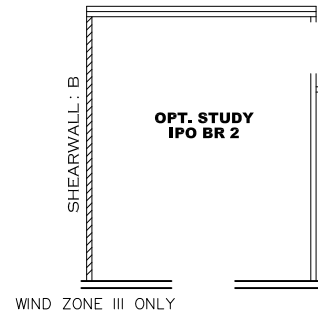
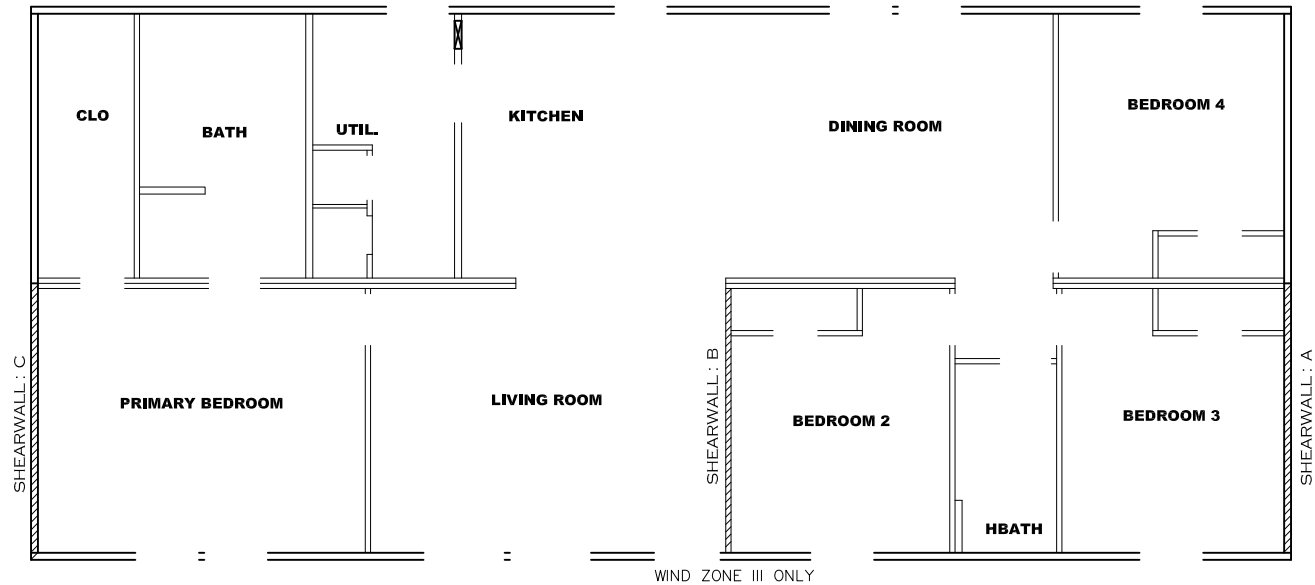
13 JAN 2022
FP-28-5506

Federal Manufactured
Home Construction
And Safety Standards

| CIRCUIT | CIRCUIT # | WIRE | BREAKER | CIRCUIT | CIRCUIT # | WIRE | BREAKER | CIRCUIT | CIRCUIT # | WIRE | BREAKER |
|----------------|-------------------|-------------|---------|---------------|---------------|-------------|---------|----------------|-----------|-------------|---------|
| LIGHT/RECEP | 1A,B,3A,B,14A,12B | 14-2 | 15-SP | WATER HEATER | 4A,6B | SEE NOTE #8 | | BATHROOM | 16 A | 12-2 | 20-SP |
| KITCHEN/DINING | 2A,2B | 12-2 | 20-SP | RANGE | 5B,7A | SEE NOTE #8 | | OPT G/D/ISP | 9B | SEE NOTE #8 | |
| WASHER | 12A | 12-2 | 20-SP | OPT GAS RANGE | 15B | SEE NOTE #8 | | OPT SPA/WP/JAC | 11A,B | SEE NOTE #8 | |
| DRYER | 5A,7B | SEE NOTE #8 | | FURNACE | 6A,8A,B,10A,B | SEE NOTE #8 | | FREEZER | N/A | SEE NOTE #8 | |
| | | | | OPT D/WASH | 9A | SEE NOTE #8 | | | | | |
| | | | | SMOKE ALARM | 4B | SEE NOTE #8 | | | | | |

1580 SQ.FT. (STD PLAN "CONDITIONED")
N/A SQ.FT. (W/OPT. PORCH/RECESS "CONDITIONED")

| | | |
|------------------------------|-----------------------------|-------------------------|
| CMH MANUFACTURING | Model #: UXL28G04A | Drawing #: |
| | Date: 1/2/2022 Scale: N/A | 29M181 |
| Product Designer: E HARDWICK | | 28 X 60 Ultra Excel G04 |
| ELECTRICAL PLAN-06 | | |



Model # 29M181-8FT

Minimum Joist Spacing 16 "

Box Width = 158 " Double wide No Offset Box
 Box Length = 60 ft. 95.5" 12" MIN. IBEAM No Clerestory
 No Skylights No Origami Dormer
 No Porches No Sunken Floor
 Joist Size = #2 sp 2x6 Lags 9Mx3" No Parapet Roof

Version R13.6a

Wind Zone 1 Standard Roof (3/8" sheathing only with 15 gax 1.5" at 5"/10" 96 inch sidewall
 Diaphragm Construction: oc. (197 plf) Chords: #3 2x4 plate w/ 2x4 rail spliced w/ 12" glue block.

| Shearwall | Dist./ Hitch | Length | PLF | # of Joists | Lags | Notes |
|-----------|--------------|--------|-----|-------------|------|-------|
| A | 0' | 136" | 162 | 2 | 2/1 | |
| C | 60' | 136" | 162 | 2 | 2/1 | |

Wind Zone 2 Standard Roof (3/8" sheathing only with 15 gax 1.5" at 5"/10" 96 inch sidewall
 Diaphragm Construction: oc. (197 plf) Chords: #3 2x4 plate w/ 2x4 rail spliced w/ 12" glue block.

| Shearwall | Dist./ Hitch | Length | PLF | # of Joists | Lags | Notes |
|-----------|--------------|--------|-----|-------------|------|-------|
| A | 0' | Full | 425 | 2 | 5/5 | |
| C | 60' | Full | 425 | 2 | 5/5 | |

Wind Zone 3 Standard Roof (3/8" sheathing only with 15 gax 1.5" at 5"/10" 96 inch sidewall
 Diaphragm Construction: oc. (197 plf) Chords: #3 2x4 plate w/ 2x4 rail spliced w/ 12" glue block.

| Shearwall | Dist./ Hitch | Length | PLF | # of Joists | Lags | Notes |
|-----------|--------------|--------|-----|-------------|------|-------|
| A | 0' | Full | 425 | 2 | 5/5 | |
| B | 26.79' | Full | 515 | 2 | 4/4 | |
| C | 60' | Full | 425 | 2 | 5/5 | |

APPROVED **IWGC** **APPROVED**
 13 JAN 2022
 FP-28-5506
 Federal Manufactured Home Construction And Safety Standards

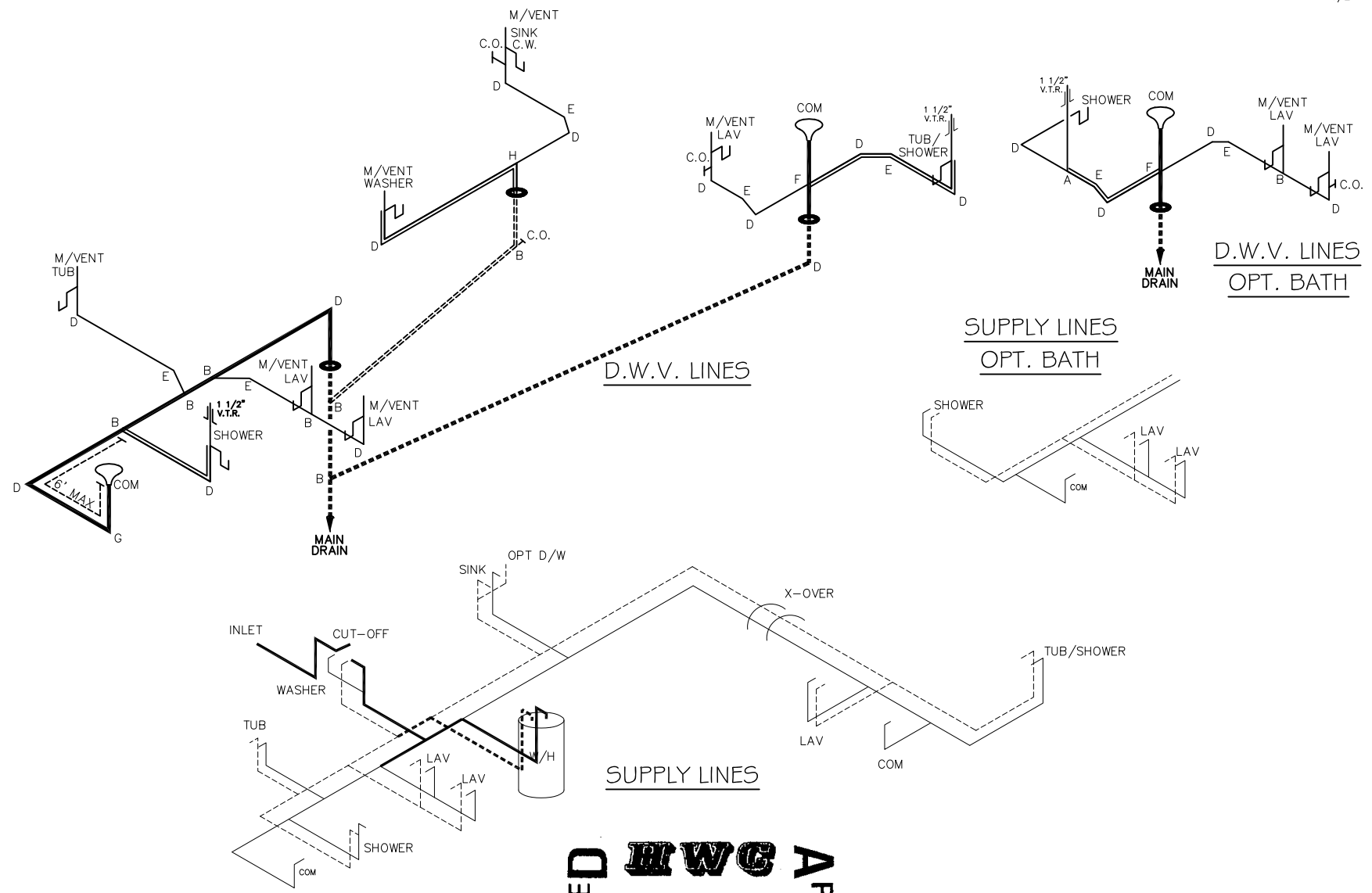
1580 SQ.FT. (STD PLAN "CONDITIONED")
 N/A SQ.FT. (W/OPT. PORCH/RECESS "CONDITIONED")

| | | |
|------------------------------|---|-------------------------|
| CMH MANUFACTURING | Model #: UXL28GO4A Date: 1/2/2021 Scale: N/A | Drawing #: 29M181 |
| Product Designer: E HARDWICK | | 28 X 60 Ultra Excel 604 |

8' SHEARWALL

NOTE: DASHED LINES INDICATE HOT WATER
SOLID LINES INDICATE COLD WATER

— = 3/4"
— = 1/2"



D.W.V. LINES
OPT. BATH

SUPPLY LINES
OPT. BATH

SUPPLY LINES

| LEGEND | |
|--------|------------------------|
| A | SHORT TURN T-Y |
| B | LONG TURN T-Y |
| C | 1/4 BEND |
| D | LONG SWEEP 1/4 BEND |
| E | 45° ELL |
| F | DBL. SANITARY TEE |
| G | 4x3 CLOSET ELL |
| H | DOUBLE ELL |
| I | 22 1/2° ELL |
| J | 45° Y |
| K | LONG TURN STREET ELBOW |
| L | 45° FTC ELL |

| DWV LINE SIZE CHART | |
|---------------------|----------|
| — | = 3" |
| — | = 2" |
| — | = 1 1/2" |

APPROVED **HWC** **APPROVED**

13 JAN 2022
FP-28-5506

Federal Manufactured
Home Construction
And Safety Standards

| | |
|--|---|
| 1580 SQ.FT. (STD PLAN "CONDITIONED") N/A SQ.FT. (W/OPT. PORCH/RECESS "CONDITIONED") | |
| CMH MANUFACTURING | Model #: UXL28604A Date: 12/28/21 Scale: N/A |
| Product Designer: E HARDWICK | Drawing #: 29M181 |
| D.W.V. and Supply Lines | |