

NOTES:

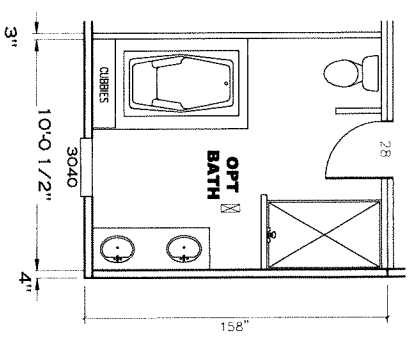
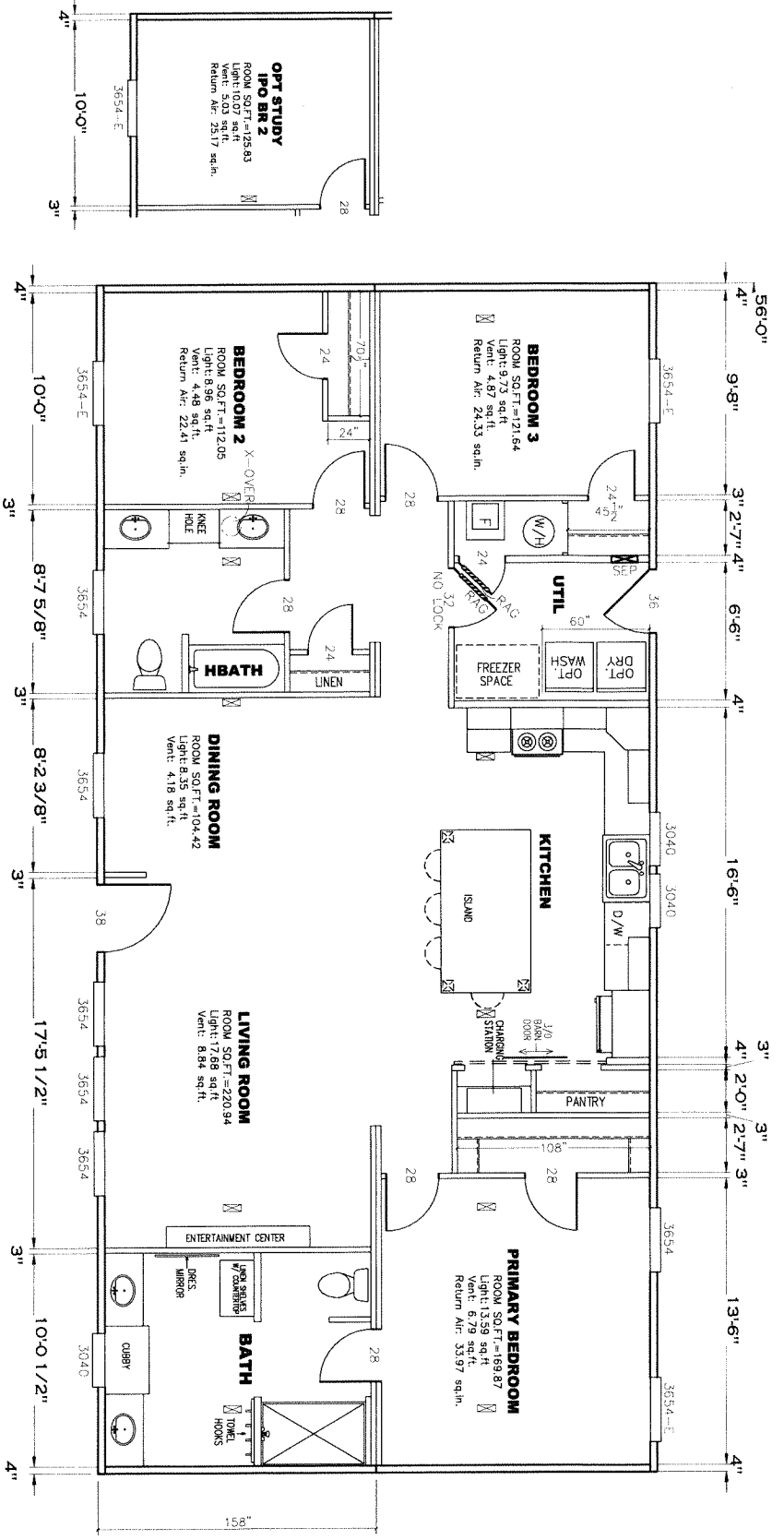
1. ALL CIRCUITS SHOWN ARE FOR REFERENCE AND MAY BE CHANGED BASED ON OPTIONAL COMPONENTS INSTALLED IN THE HOME.
2. REFER TO DAPIA MANUAL FOR SYMBOL CHART.
3. EITHER LIGHT OR RECEPTACLE MUST CONNECT TO SWITCH.
4. EF-1= 50 CFM EXHAUST FAN REQUIRED FOR THERMAL ZONE III THERMAL ZONES I & II MAY USE FAN OR WINDOW W/1.5 SQ. FT. OPENABLE GLASS.
5. EF-2= 50 CFM EXHAUST FAN REQUIRED THERMAL ZONE I, II, AND III.
6. EF-3= 100 CFM RANGE EXHAUST FAN, SWITCH AT HOOD.
7. EF-4= WHOLE HOUSE VENTILATION REQUIREMENTS PER DAPIA MANUAL.
8. REFER TO DAPIA MANUAL OR THE MFG. INSTALLATION INSTRUCTIONS FOR PROPER WIRE SIZE AND BREAKER SIZE FOR SPECIFIC APPLIANCE AND MODEL BEING INSTALLED.
9. ALL SMOKE ALARMS TO BE LOCATED ON THE CEILING.
10. CARBON MONOXIDE ALARMS ARE ONLY REQUIRED WHEN HOME HAS EITHER FUEL BURNING APPLIANCES, IS GARAGE READY OR BASEMENT READY. REFERENCE DAPIA MANUAL FOR ADDITIONAL INFORMATION.
11. DIMENSIONS SHOWN ON PRINT ARE APPROXIMATE AND TO BE USED ONLY AS A GUIDELINE.

CIRCUIT	CIRCUIT #	WIRE	BREAKER	CIRCUIT #	WIRE	BREAKER	CIRCUIT #	WIRE	BREAKER
LIGHT/RECP	1A,B,3A,B,13B,14B	14-2	15-SP	WATER HEATER	4A,6B	SEE NOTE #8	BATHROOM	16A	12-2
KITCHEN	2A,2B,14A	12-2	20-SP	RANGE	5B,7A	SEE NOTE #8	OPT G/D/SP	9B	SEE NOTE #8
WASHER	12A	12-2	20-SP	FURNACE	6A,8A,B,10A,B	SEE NOTE #8	OPT SPN/W/ JAC	11A,B	SEE NOTE #8
DRYER	5A,7B	SEE NOTE #8		SMOKE ALARM	4B	SEE NOTE #8	FREEZER	13A	SEE NOTE #8

APPROVED
DWG
 REVISED
 13 JUN 2023
 FP-28-5513

APPROVED
 PDF

1,475 SQ.FT. (STD PLAN "CONDITIONED")
 N/A SQ.FT. (W/OPT. PORCH/RECESS "CONDITIONED")
CMH
 Product Designer: E HARDWICK
 Model #: UBX285531
 Date: 2/21/22
 Scale: NTS
 28' x 56' Ultra Excel
 Drawing #: 29M190
ELECTRICAL PLAN-06
 REVISION 6/7/23
 RCR-3862
 EIH

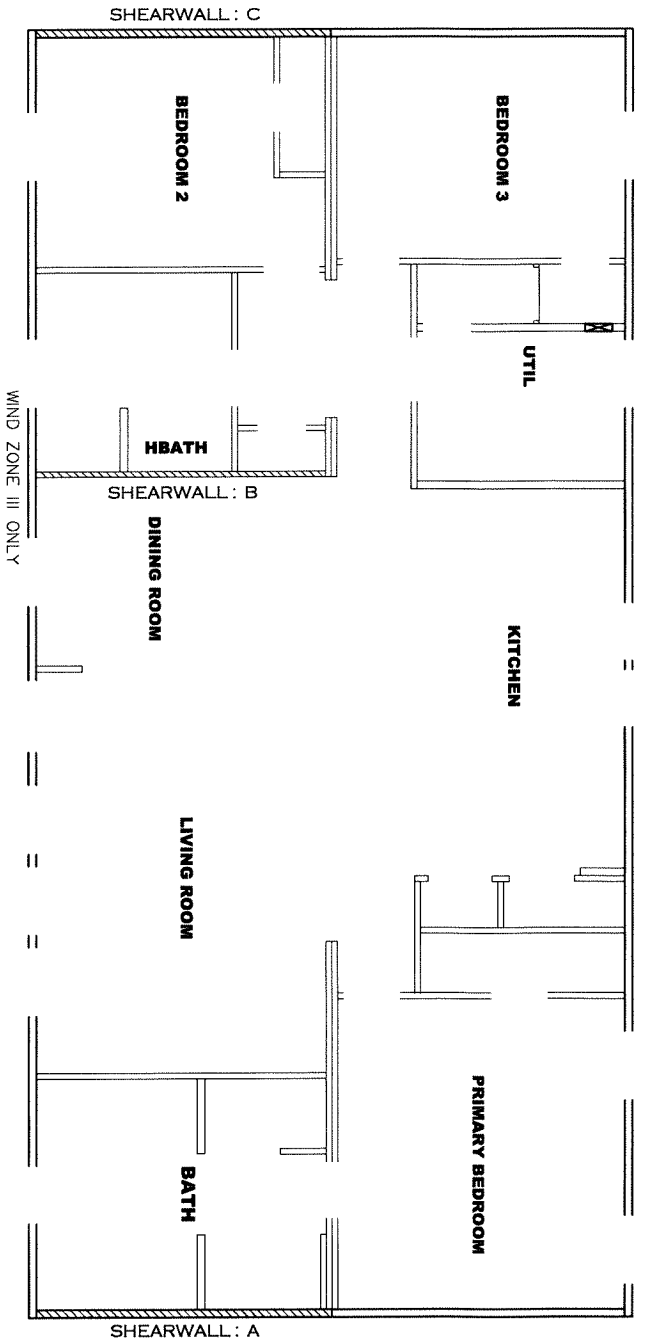


APPROVED
REVISED
 09 MAY 2022
 FP-28-5513
APPROVED

**Federal Manufactured
 Home Construction
 And Safety Standards**

Product Designer: E HARDWICK		1,475 SQ.FT. (STD. PLAN "CONDITIONED")	
N/A SQ.FT. (W/OPT. PORCH/RECESS "CONDITIONED")		1,475 SQ.FT. (STD. PLAN "CONDITIONED")	
Model #:	UBX285631	Drawing #:	29M/190
Date: 2/21/22	Scale: NTS	28' x 56' Ultra Excel	
MANUFACTURING		REVISION ECR-3655	
FLOOR PLAN		5/3/22 EII	

NOTE: ALL BEDROOMS ARE WITHIN 35' FROM AN EXIT DOOR



Model # 29M190-8ft Minimum Joist Spacing 16 "

Box Width = 158 " Double wide No Offset Box

Box Length = 56 ft. 95.5" 12" MIN. I-BEAM No Clerestory

No Skylights No Origami Dormer

No Porches No Sunken Floor

Joist Size = #2 sp 2x6 Lags 9Mx3" No Parapet Roof

Version R13.14

Wind Zone 1 Standard Roof				(3/8" sheathing only with 15 gax 1.5" at 57/10" oc. (197 p/f) Chords: 2x4 SPF #3 Top Plate & 2x4 Rail Each spliced w/ 12" glue block				96 inch sidewall			
Shearwall	Dist./ Hitch	Length	PLF	# of Joists	Lags	Notes					
A	0'	128"	162	2	2/1						
C	56'	128"	162	2	2/1						
Wind Zone 2 Standard Roof				(3/8" sheathing only with 15 gax 1.5" at 57/10" oc. (197 p/f) Chords: 2x4 SPF #3 Top Plate & 2x4 Rail. Each spliced w/ 12" glue block				96 inch sidewall			
Shearwall	Dist./ Hitch	Length	PLF	# of Joists	Lags	Notes					
A	0'	Full	425	2	3/3						
C	56'	Full	425	2	3/3						
Wind Zone 3 Standard Roof				(3/8" sheathing only with 15 gax 1.5" at 57/10" oc. (197 p/f) Chords: 2x4 SPF #3 Top Plate & 2x4 Rail. Each spliced w/ 12" glue block				96 inch sidewall			
Shearwall	Dist./ Hitch	Length	PLF	# of Joists	Lags	Notes					
A	0'	Full	425	2	3/3						
B	36.66'	Full	425	2	2/2	0.66					
C	56'	136"	162	2	2/1						

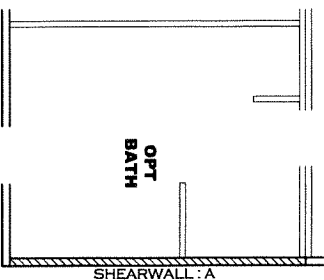
APPROVED

CMH

23 FEB 2022
FP-28-5513

Federal Manufactured Home Construction And Safety Standards

APPROVED



1,475 SQ. FT. (STD PLAN "CONDITIONED")

N/A SQ. FT. (W/OPT. PORCH/RECESS "CONDITIONED")

Product Designer: E HARDWICK

MANUFACTURING

Model #: UBX285631

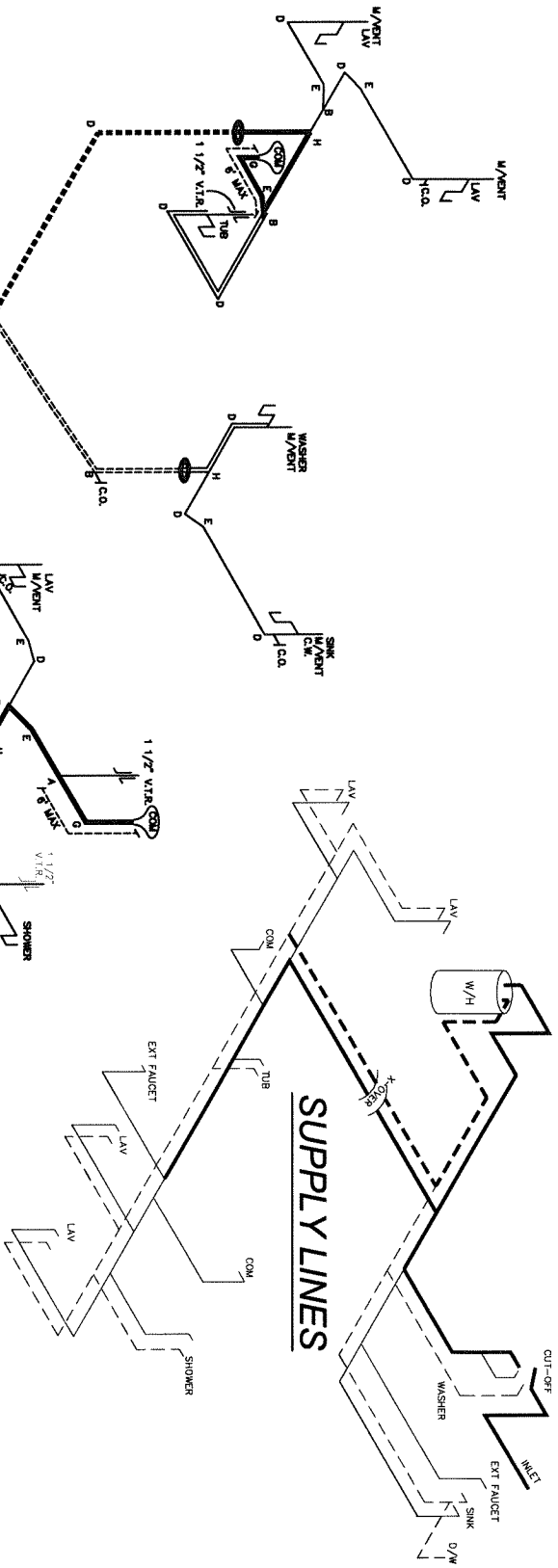
Date: 2/21/22

Scale: NTS

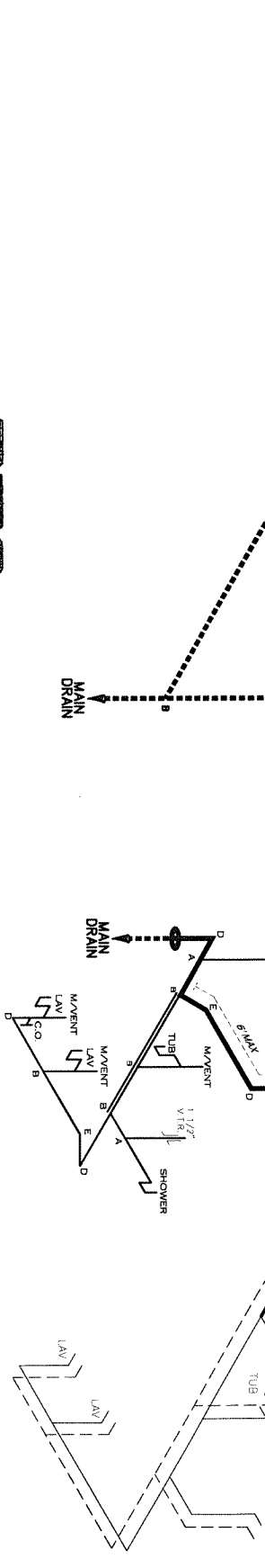
28' x 56' Ultra Excel

NOTE: DASHED LINES INDICATES HOT WATER
SOLID LINES INDICATES COLD WATER

— = 3/4"
- - - = 1/2"



D.W.V. LINES



**D.W.V. LINES
OPT. BATH**

**SUPPLY LINES
OPT. BATH**

~ 40'

1,475 SQ.FT. (STD PLAN "CONDITIONED")
N/A SQ.FT. (W/OPT. PORCH/RECESS "CONDITIONED")

Product Designer: E HADJINICK	Model #: UBX285631	Drawing #: 29MT90
MANUFACTURING	Date: 2/21/22	Scale: NTS
28' x 56' Ultra Excel		

LEGEND

A	SHORT TURN T-Y
B	LONG TURN T-Y
C	LAV BEND
D	LAV STREET 1/4 BEND
E	45° ELL
F	90° SANITARY TE
G	4x3 GOSSET ELL
H	DOUBLE ELL
I	2x 1/2" ELL
J	45° V
K	LONG TURN STREET ELBOW
L	45° T-O ELL

OWN LINE SIZE CHART

—	3"
- - -	2"
- - - -	1 1/2"

APPROVED **REVISED** **APPROVED**
11 OCT 2022
 FP-28-5513
 Federal Manufactured Home Construction And Safety Standards