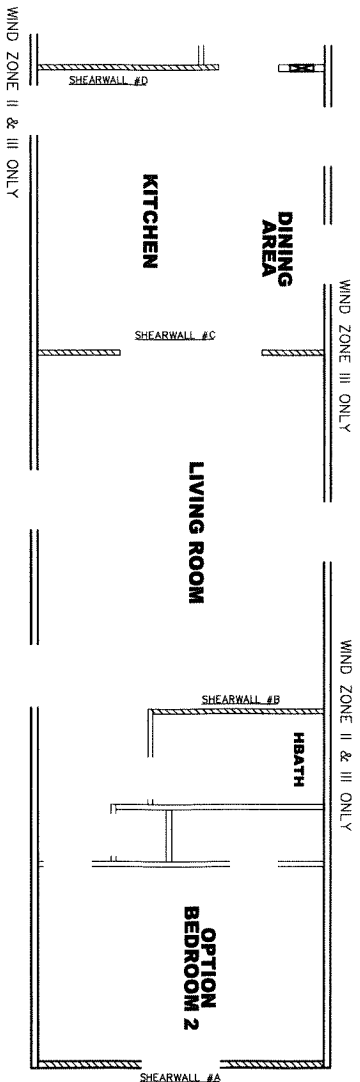


- NOTES:
1. ALL CIRCUITS SHOWN ARE FOR REFERENCE AND MAY BE CHANGED BASED ON OPTIONAL COMPONENTS INSTALLED IN THE HOME.
 2. REFER TO DAPA MANUAL FOR SYMBOL CHART.
 3. EITHER LIGHT OR RECEPTACLE MUST CONNECT TO SWITCH.
 4. EF-1= 50 CFM EXHAUST FAN REQUIRED FOR THERMAL ZONE I. THERMAL ZONES I & II MAY USE FAN OR WINDOW W/1.5 SQ. FT. OPENABLE GLASS.
 5. EF-2= 50 CFM EXHAUST FAN REQUIRED THERMAL ZONE I, II, AND III.
 6. EF-3= 100 CFM RANGE EXHAUST FAN, SWITCH AT HOOD.
 7. EF-4= WHOLE HOUSE VENTILATION REQUIREMENTS PER DAPA MANUAL.
 8. REFER TO DAPA MANUAL OR THE MFG. INSTALLATION INSTRUCTIONS FOR PROPER WIRE SIZE AND BREAKER SIZE FOR SPECIFIC APPLIANCE AND MODEL BEING INSTALLED.
 9. ALL SMOKE ALARMS TO BE LOCATED ON THE CEILING.
 10. CARBON MONOXIDE ALARMS ARE ONLY REQUIRED WHEN HOME HAS EITHER FUEL BURNING APPLIANCES, IS GARAGE READY OR HAS A BUILT-IN ATTACHED GARAGE. REFER TO DAPA MANUAL FOR ADDITIONAL INFORMATION.
 11. DIMENSIONS SHOWN ON PRINT ARE APPROXIMATE AND TO BE USED ONLY AS A GUIDELINE.

CIRCUIT	CIRCUIT #	WIRE	BREAKER	CIRCUIT	CIRCUIT #	WIRE	BREAKER	CIRCUIT	CIRCUIT #	WIRE	BREAKER
Light/Recep	1A,1B, 3A,3B	14-2	15-SP	Water Heater	4A,6B	SEE NOTE #8		Bathroom	16A	12-2	20-SP
Kitchen/Range	2A,2B	12-2	20-SP	Range	5B,7A	SEE NOTE #8		Opt Gas Range	15B	SEE NOTE #8	
Washer	12A	12-2	20-SP	Furnace	6A,8A,B,10A,B	SEE NOTE #8		Opt Dryer	11A,B	SEE NOTE #8	
Drxer	5A,7B	SEE NOTE #8		Opt Dishwasher	9A	SEE NOTE #8		Freezer	N/A	SEE NOTE #8	
				Smoke Alarm	4B	SEE NOTE #8					

APPROVED
 REVISION
 14 JUN 2023
 FP-16-2898
 Federal Manufactured Home Construction And Safety Standards
APPROVED

990 SQ.FT. (STD PLAN "CONDITIONED")
 N/A SQ.FT. (W/OPT. PORCH/RECESS "CONDITIONED")
CMH
 Model #: ULTI 6663C Drawn #: 295106
 Date: 4/29/2020 Scale: NTS
 Product Designer: E. HARDWICK
 16 x 66 ULTRA PRO
ELECTRICAL PLAN - 06
 6/12/23 REVISION RCR-3882



Model # 29s106-8ft-2BR OPT Minimum Joist Spacing 16"

Box Width = 180" Single wide No Offset Box

Box Length = 66 ft. 95.5" 12" MIN. BEAM No Clerestory

No Skylights No Origami Dormer

No Porches No Sunken Floor

Joist Size = #2 spf 2x6 Lags 9Mx3" No Parapet Roof

Version R13.8

Wind Zone 1 Standard Roof (3/8" sheathing only with 15 gax 1.5" at 5"/10" oc. (197 pif) Chords: #3 2x4 plate w/ 2x4 rail 96 inch sidewall

Diaphragm Construction: spliced w/ 1/2" glue block.

Shearwall	Dist./ Hitch	Length	PLF	# of Joists	Lags	Notes
A	0'	125.625"	425	6	5/5	Split Shearwall SW1/SW2 62.75/62.87
E	66'	148"	162	2	2/1	

Wind Zone 2 Standard Roof (3/8" sheathing only with 15 gax 1.5" at 5"/10" oc. (197 pif) Chords: #3 2x4 plate w/ 2x4 rail 96 inch sidewall

Diaphragm Construction: spliced w/ 1/2" glue block.

Shearwall	Dist./ Hitch	Length	PLF	# of Joists	Lags	Notes
A	0'	125.625"	162	2	2/2	Split Shearwall SW1/SW2 % over 62.75/62.87
B	17.71'	92"	515	8	3/1	
D	49.71'	107.5"	425	5	3/1	0.47
E	66'	96"	162	2	1/1	

Wind Zone 3 Standard Roof (3/8" sheathing only with 15 gax 1.5" at 5"/10" oc. (197 pif) Chords: #3 2x4 plate w/ 2x4 rail 96 inch sidewall

Diaphragm Construction: spliced w/ 1/2" glue block.

Shearwall	Dist./ Hitch	Length	PLF	# of Joists	Lags	Notes
A	0'	125.625"	162	2	2/2	Split Shearwall 62.75/62.87
B	17.71'	96"	425	6	3/1	
C	35.53'	88"	425	3	2/2	Split Shearwall 38/50
D	49.71'	107.5"	324	4	3/1	0.47
E	66'	116"	162	2	2/1	

APPROVED **BRWG** **APPROVED**

REVISED

05 MAY 2023

FP-16-2898

Federal Manufactured Home Construction And Safety Standards

990 SQ.FT. (STD PLAN "CONDITIONED")

N/A SQ.FT. (W/OPT. PORCH/RECESS "CONDITIONED")

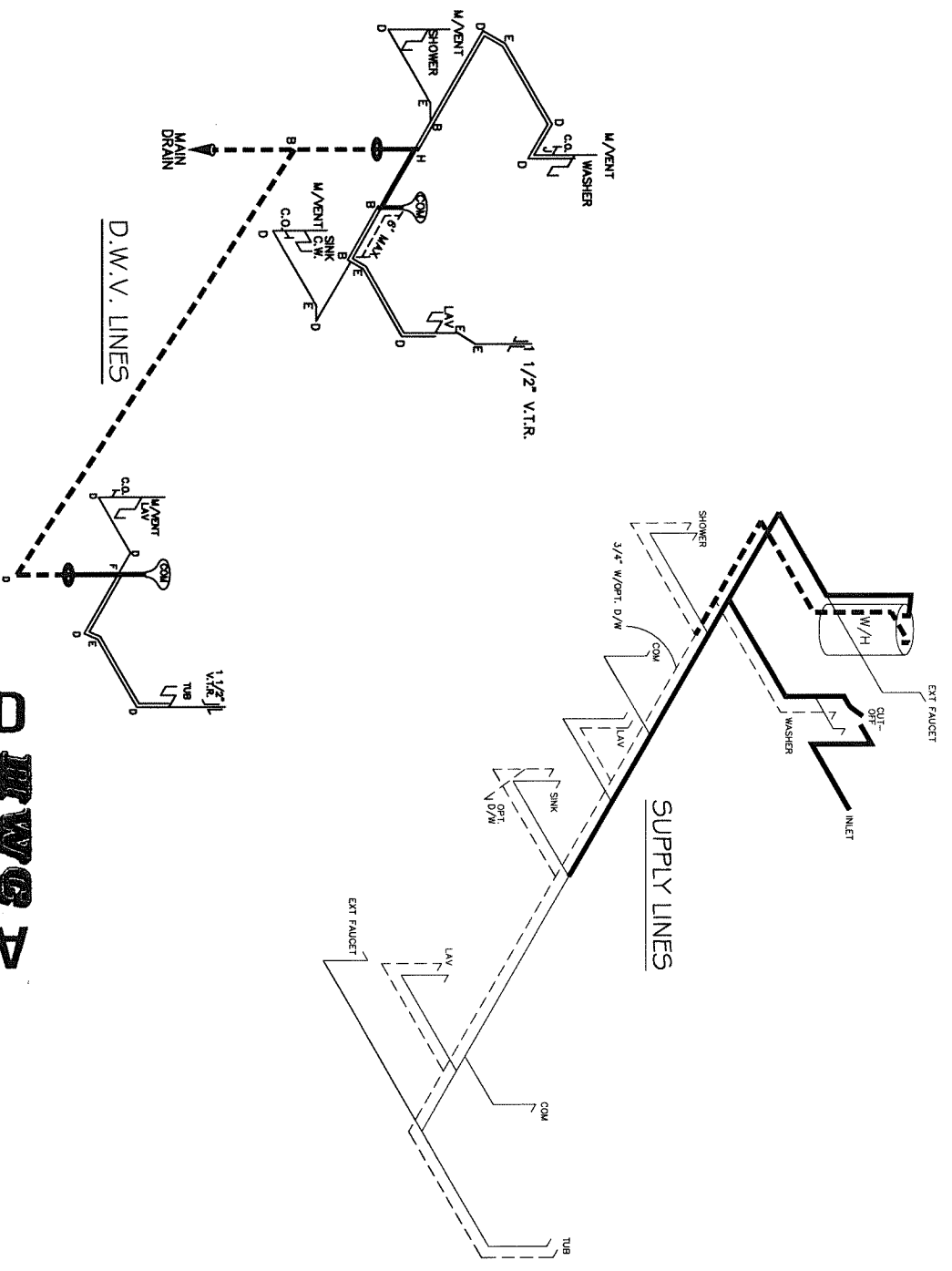
CMH HARD FACTORY

Model # ULI16663C Drawing # 295106

Product Designer: E. HARDWICK 16 x 66 ULTRA PRO

OPT. 8' SHEARWALL

NOTE:
 DASHED LINES INDICATES HOT WATER
 SOLID LINES INDICATES COLD WATER
 ——— = 3/4"
 ——— = 1/2"



LEGEND	
A	SHORT TURN T-Y
B	LONG TURN T-Y
D	LONG SWEEP 1/4 BEND
E	45° ELB
F	DBL. SANITARY TEE
G	4x3 CLOSET BL.
H	DOUBLE ELB.
J	22 1/2° ELB.
K	45° V
L	LONG TURN STREET ELBOW

D.W.V. LINE SIZE CHART	
—	1/2"
—	3"
—	2"

APPROVED
 REVISED
 05 MAY 2023
 FP-16-2898
 Federal Manufactured
 Home Construction
 And Safety Standards

D.W.V. and Supply Lines	990	SQ.FT. (STD PLAN "CONDITIONED")
	N/A	SQ.FT. (W/OPT. PORCH/RECESS "CONDITIONED")
CMH	Manufacturer:	CMH
	Model #:	ULT16663C
D.W.V. and Supply Lines	Date:	10/19/22
	Issue:	002
D.W.V. and Supply Lines	Designer:	E. HARDWICK
	Drawing #:	299106