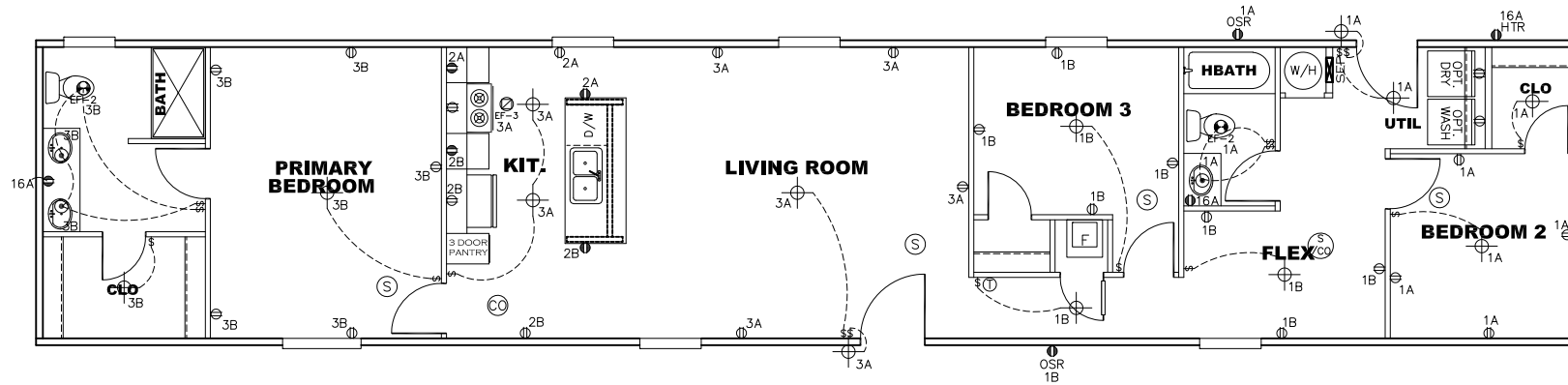


CIRCUIT	CIRCUIT #	WIRE	BREAKER	CIRCUIT	CIRCUIT #	WIRE	BREAKER	CIRCUIT	CIRCUIT #	WIRE	BREAKER
LIGHT/RECEP	1A,1B,3A,3B	14-2	15-SP	WATER HEATER	4A,6B		SEE NOTE #8	BATHROOM	16A	12-2	20-SP
KITCHEN/DINING	2A,2B	12-2	20-SP	RANGE	5B,7A		SEE NOTE #8	OPT G/DISP	9B		SEE NOTE #8
WASHER	12A	12-2	20-SP	OPT GAS RANGE	15B		SEE NOTE #8	OPT SPA/WP/JAC	11A,B		SEE NOTE #8
DRYER	5A,7B	SEE NOTE #8		FURNACE	6A,8A,B,10A,B		SEE NOTE #8	FREEZER	N/A		SEE NOTE #8
				OPT D/WASH	9A		SEE NOTE #8				
				SMOKE ALARM	4B		SEE NOTE #8				

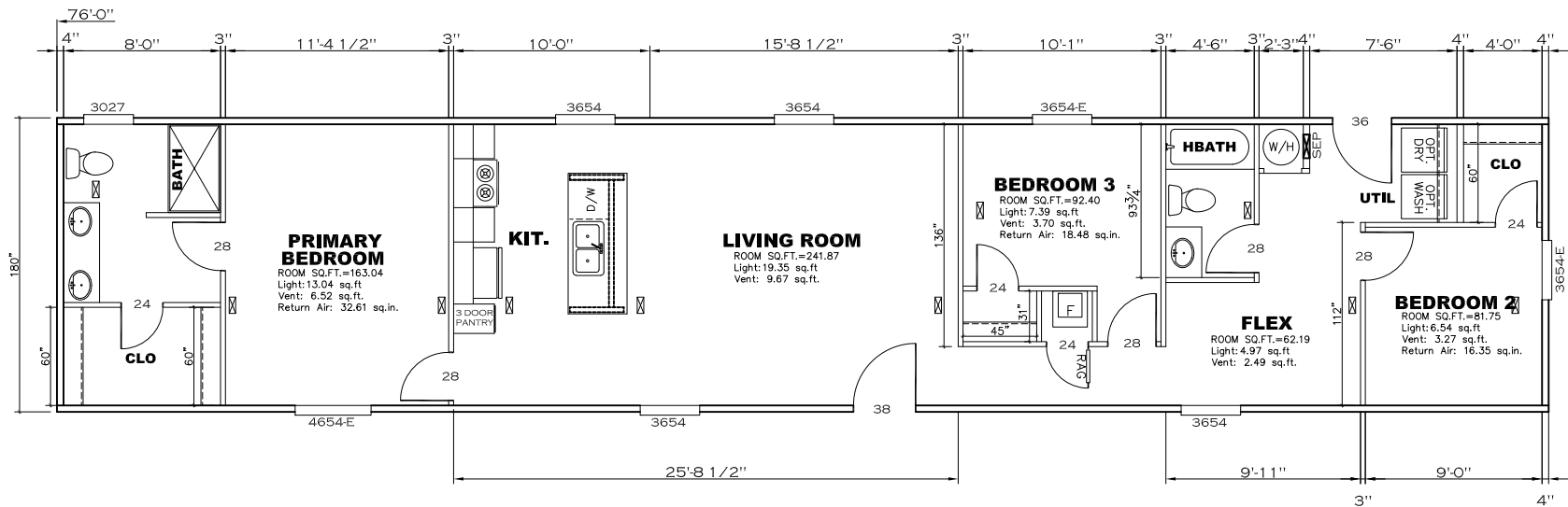


NOTES:

- ALL CIRCUITS SHOWN ARE FOR REFERENCE AND MAY BE CHANGED BASED ON OPTIONAL COMPONENTS INSTALLED IN THE HOME.
- REFER TO DAPIA MANUAL FOR SYMBOL CHART.
- EITHER LIGHT OR RECEPTACLE MUST CONNECT TO SWITCH.
- EF-1= 50 CFM EXHAUST FAN REQUIRED FOR THERMAL ZONE III THERMAL ZONES I & II MAY USE FAN OR WINDOW W/1.5 SQ. FT. OPENABLE GLASS.
- EF-2= 50 CFM EXHAUST FAN REQUIRED THERMAL ZONE I, II, AND III.
- EF-3= 100 CFM RANGE EXHAUST FAN, SWITCH AT HOOD.
- EF-4= WHOLE HOUSE VENTILATION REQUIREMENTS PER DAPIA MANUAL.
- REFER TO DAPIA MANUAL OR THE MFG. INSTALLATION INSTRUCTIONS FOR PROPER WIRE SIZE AND BREAKER SIZE FOR SPECIFIC APPLIANCE AND MODEL BEING INSTALLED.
- ALL SMOKE ALARMS TO BE LOCATED ON THE CEILING.
- CARBON MONOXIDE ALARMS ARE ONLY REQUIRED WHEN HOME HAS EITHER FUEL BURNING APPLIANCES, IS GARAGE READY OR IS BASEMENT READY. REFERENCE DAPIA MANUAL FOR ADDITIONAL INFORMATION.
- DIMENSIONS SHOWN ON PRINT ARE APPROXIMATE AND TO BE USED ONLY AS A GUIDELINE.

**APPROVED** **HWG** **APPROVED**  
 REVISED  
 16 JUN 2022  
 FP-16-3027  
 Federal Manufactured  
 Home Construction  
 And Safety Standards

1140 SQ.FT. (STD PLAN "CONDITIONED") N/A SQ.FT. (W/OPT. PORCH/RECESS "CONDITIONED")	
<b>CMH</b> MANUFACTURING	Model #: UXL1G7G3C Date: 5/17/22 Scale: NTS
Product Designer: E HARDWICK	Drawing #: 295112
16' x 76' MIYO	
<b>ELECTRICAL PLAN-06</b>	
<b>REVISION</b> BCR-2672 6/15/22 <b>EH</b>	

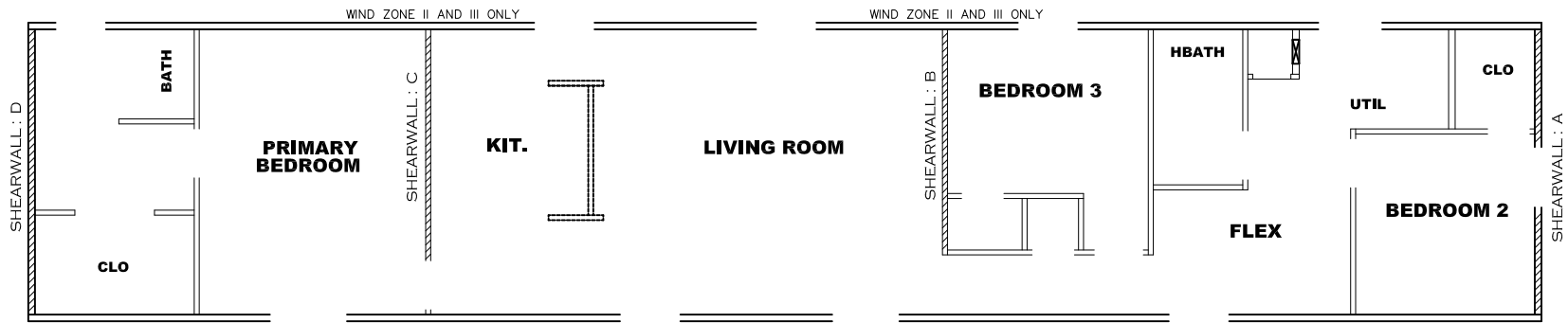


**APPROVED** **HWG** **APPROVED**

REVISED  
16 JUN 2022  
FP-16-3027

Federal Manufactured  
Home Construction  
And Safety Standards

1140 SQ.FT. (STD PLAN "CONDITIONED")		N/A SQ.FT. (W/OPT. PORCH/RECESS "CONDITIONED")	
<b>CMH</b> MANUFACTURING	Model #: UXL16763C Date: 5/17/22	Drawing #: 295112	
Product Designer: E HARDWICK		16' x 76' MIYO	
<b>FLOOR PLAN</b>		REVISION ECR-2672 6/15/22 BH	



**Model # 29s112-8ft**

Minimum Joist Spacing 16 "

- Box Width = 180 " Single wide No Offset Box
- Box Length = 76 ft. 95.5" 12" MIN. IBEAM No Clerestory
- No Skylights No Origami Dormer
- No Porches No Sunken Floor
- Joist Size = #2 sp 2x6 Lags 9Mx3" No Parapet Roof

**Version R13.13**

Wind Zone 1 Standard Roof		(3/8" sheathing only with 15 gax 1.5" at 5"/10" oc. (197 plf) Chords: 2x4 SPF #3 Top Plate & 2x4 Rail. Each spliced w/ 12" glue block.				96 inch sidewall	
Diaphragm Construction:							
Shearwall	Dist./ Hitch	Length	PLF	# of Joists	Lags	Notes	SW1/SW2
A	0'	135.625"	425	2	4/4	Split Shearwall *	71/64.625
D	76'	Full	162	2	2/2		
Wind Zone 2 Standard Roof		(3/8" sheathing only with 15 gax 1.5" at 5"/10" oc. (197 plf) Chords: 2x4 SPF #3 Top Plate & 2x4 Rail. Each spliced w/ 12" glue block.				96 inch sidewall	
Diaphragm Construction:							
Shearwall	Dist./ Hitch	Length	PLF	# of Joists	Lags	Notes	SW1/SW2
A	0'	135.625"	425	2	4/4	Split Shearwall *	71/64.625
B	29.96'	136"	425	2	4/1		
C	55.92'	136"	324	2	3/1		
D	76'	120"	162	2	2/1		
Wind Zone 3 Standard Roof		(3/8" sheathing only with 15 gax 1.5" at 5"/10" oc. (197 plf) Chords: 2x4 SPF #3 Top Plate & 2x4 Rail. Each spliced w/ 12" glue block.				96 inch sidewall	
Diaphragm Construction:							
Shearwall	Dist./ Hitch	Length	PLF	# of Joists	Lags	Notes	SW1/SW2
A	0'	135.625"	425	2	4/4	Split Shearwall *	71/64.625
B	29.96'	128"	515	3	5/2		
C	55.92'	136"	425	2	4/1		
D	76'	140"	162	2	2/1		

**HWG**

26 MAY 2022  
FP-16-3027 3  
Federal Manufactured Home Construction And Safety Standards

APPROVED

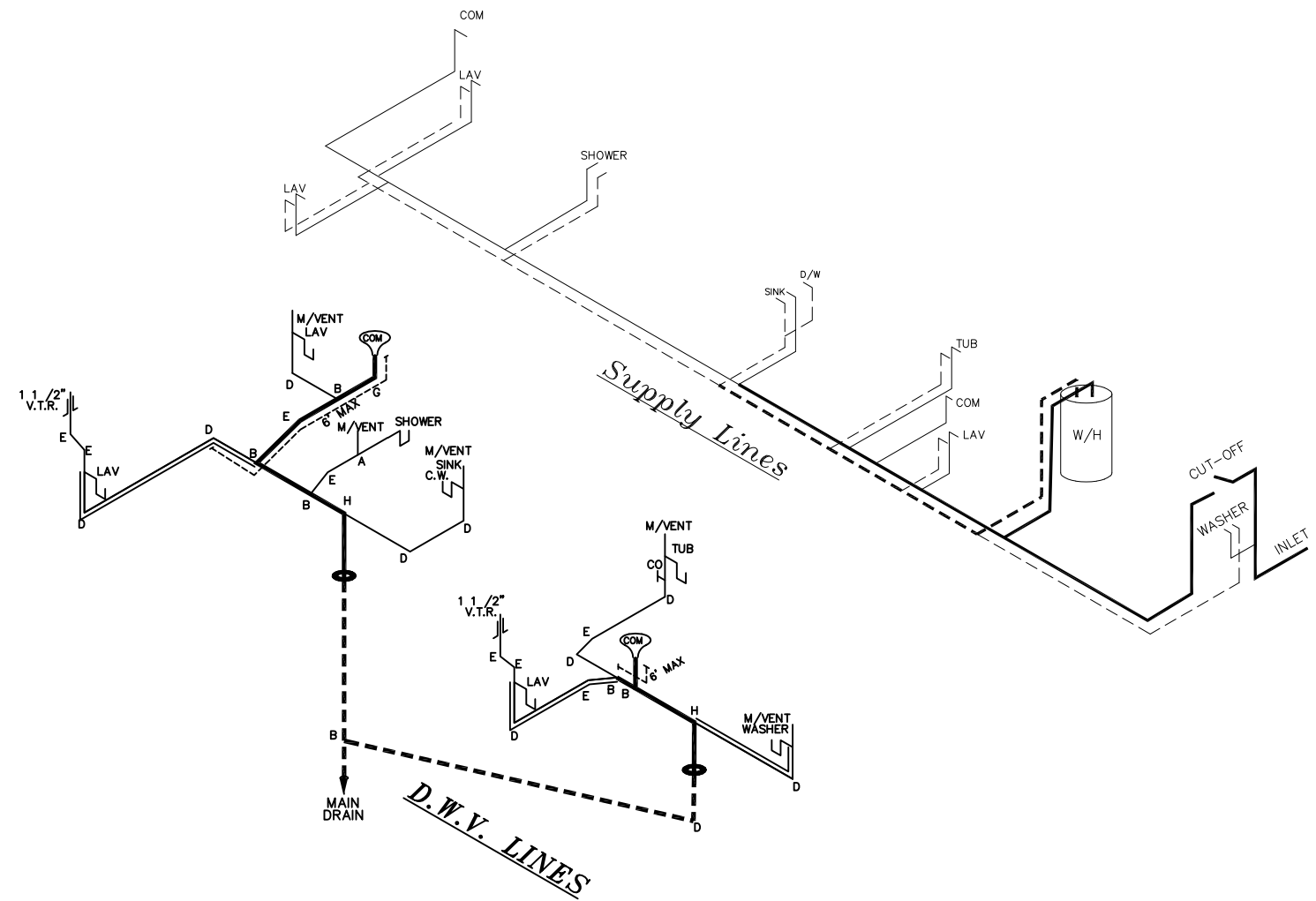
APPROVED

1140 SQ.FT. (STD PLAN "CONDITIONED")  
N/A SQ.FT. (W/OPT. PORCH/RECESS "CONDITIONED")

<b>CMH</b> MANUFACTURING	Model #: UXL16763C	Drawing #:
	Date: 5/17/22	Scale: NTS 295112
Product Designer: E HARDWICK		
16' x 76' MIYO		
SHEARWALL PAGE		

NOTE:  
DASHED LINES INDICATE HOT WATER  
SOLID LINES INDICATE COLD WATER

— = 3/4"  
— = 1/2"



LEGEND	
A	SHORT TURN T-Y
B	LONG TURN T-Y
C	1/4 BEND
D	LONG SWEEP 1/4 BEND
E	45 ELL
F	DBL. SANITARY TEE
G	4x3 CLOSET ELL
H	DOUBLE ELL
I	22 1/2° ELL
J	45° Y
K	LONG TURN STREET ELBOW
L	45 FTG ELL

DWV LINE SIZE CHART	
—	= 3"
—	= 2"
—	= 1 1/2"

**APPROVED** **HWG** **APPROVED**  
 REVISED  
 16 JUN 2022  
 FP-16-3027  
 Federal Manufactured  
 Home Construction  
 And Safety Standards

1140 SQ.FT. (STD PLAN "CONDITIONED")		N/A SQ.FT. (W/OPT. PORCH/RECESS "CONDITIONED")	
<b>CMH</b> MANUFACTURING	Model #: UXL16763C	Drawing #: 295112	
Product Designer: E HARDWICK	Date: 5/17/22	Scale: NTS	
<b>D.W.V. and Supply Lines</b>		16' x 76' MIYO	
		REVISION ECR-2672 6/16/22 EH	