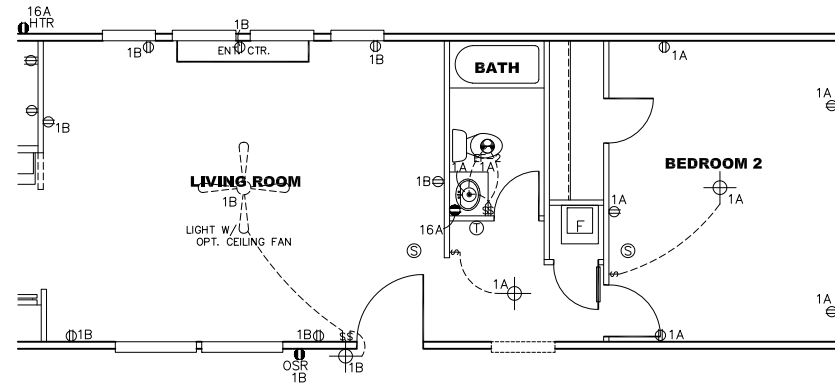
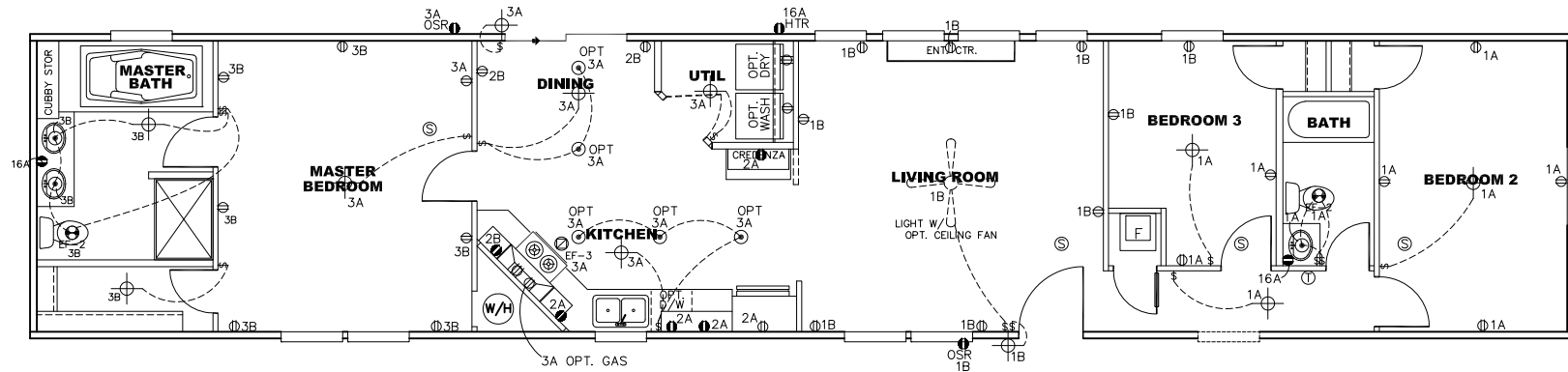


| CIRCUIT | CIRCUIT # | WIRE | BREAKER | CIRCUIT | CIRCUIT # | WIRE | BREAKER | CIRCUIT | CIRCUIT # | WIRE | BREAKER |
|-------------|-------------|-------------|---------|--------------|---------------|-------------|---------|----------------|-----------|-------------|---------|
| LIGHT/RECEP | 1A,1B,3A,3B | 14-2 | 15-SP | WATER HEATER | 4A,6B | SEE NOTE #8 | | BATHROOM | 16A | 12-2 | 20-SP |
| KITCHEN | 2A,2B | 12-2 | 20-SP | RANGE | 5B,7A | SEE NOTE #8 | | OPT G/DISP | 9B | SEE NOTE #8 | |
| WASHER | 12A | 12-2 | 20-SP | FURNACE | 6A,8A,B,10A,B | SEE NOTE #8 | | OPT SPA/W/CLAC | 11A,B | SEE NOTE #8 | |
| DRYER | 5A,7B | SEE NOTE #8 | | OPT D/WASH | 9A | SEE NOTE #8 | | FREEZER | N/A | SEE NOTE #8 | |
| | | | | SMOKE ALARM | 4B | SEE NOTE #8 | | | | | |



NOTES:

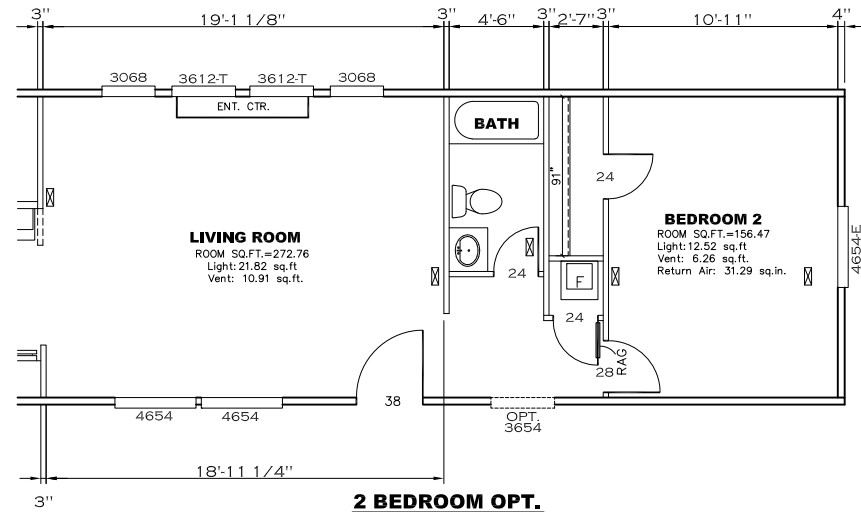
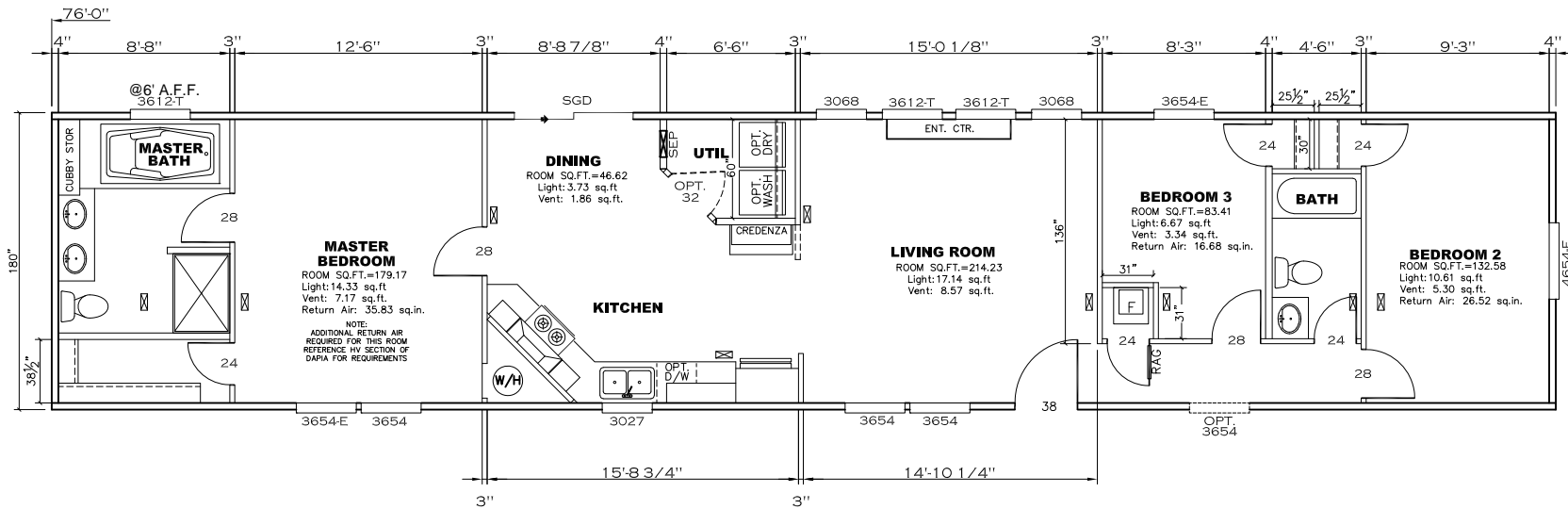
- ALL CIRCUITS SHOWN ARE FOR REFERENCE AND MAY BE CHANGED BASED ON OPTIONAL COMPONENTS INSTALLED IN THE HOME.
- REFER TO EL SECTION OF THE DAPIA FOR SYMBOL CHART.
- EITHER LIGHT OR RECEPTACLE MUST CONNECT TO SWITCH.
- EF-1= 50 CFM EXHAUST FAN REQUIRED FOR THERMAL ZONE III THERMAL ZONES I & II MAY USE FAN OR WINDOW W/1.5 SQ. FT. OPENABLE GLASS.
- EF-2= 50 CFM EXHAUST FAN REQUIRED THERMAL ZONE I, II, AND III.
- EF-3= 100 CFM RANGE EXHAUST FAN, SWITCH AT HOOD.
- EF-4= WHOLE HOUSE VENTILATION PER REQUIREMENTS IN S-HV-10 & 10A OR M-HV-11 & 11A OF DAPIA.
- REFER TO EL SECTION OF THE DAPIA OR THE MFG. INSTALLATION INSTRUCTIONS FOR PROPER WIRE SIZE AND BREAKER SIZE FOR SPECIFIC APPLIANCE AND MODEL BEING INSTALLED.
- ALL SMOKE ALARMS TO BE LOCATED ON THE CEILING.
- DIMENSIONS SHOWN ON PRINT ARE APPROXIMATE AND TO BE USED ONLY AS A GUIDELINE.

APPROVED **HWG** **APPROVED**
 10 SEP 2020
 FP-16-2950
 Federal Manufactured
 Home Construction
 And Safety Standards

2 BEDROOM OPT.

1140 SQ.FT. (STD PLAN "CONDITIONED")
 N/A SQ.FT. (W/OPT. PORCH/RECESS "CONDITIONED")

| | | |
|-------------------------------|--------------------|------------|
| CMH MANUFACTURING | Model #: ANN167631 | Drawing #: |
| | Date: 9/9/20 | Scale: NTS |
| Product Designer: E. HARDWICK | | 295107 |
| ELECTRICAL PLAN-06 | | |



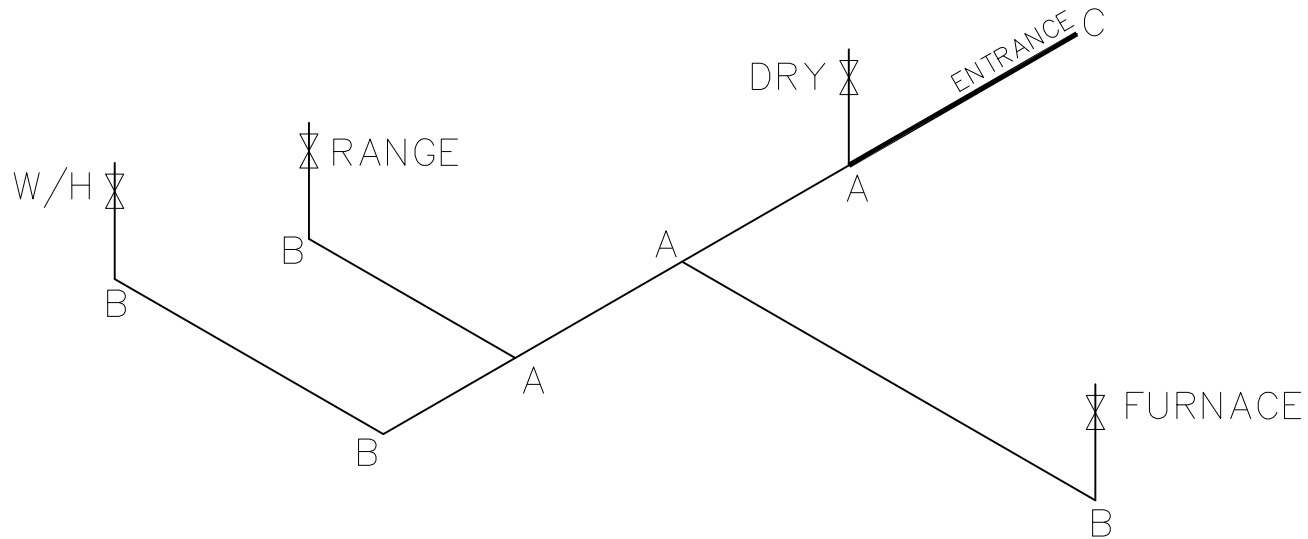
APPROVED **RWGC** **APPROVED**
10 SEP 2020
FP-16-2950
Federal Manufactured
Home Construction
And Safety Standards

1140 SQ.FT. (STD PLAN "CONDITIONED")
N/A SQ.FT. (W/OPT. PORCH/RECESS "CONDITIONED")

| | | |
|-------------------------------|--------------------|---------------------|
| CMH MANUFACTURING | Model #: ANN167631 | Drawing #: |
| | Date: 9/9/20 | Scale: NTS 295107 |
| Product Designer: E. HARDWICK | | 16 X 76 ANNIVERSARY |
| FLOOR PLAN | | |

| LEGEND | | APPLIANCE BTU'S RATINGS MAX. INPUT | |
|--------|----------|------------------------------------|--------------|
| SYM | FITTINGS | | |
| A | TEE | FURNACE | 65,000 BTU'S |
| B | 90 ELL | W/H | 37,000 BTU'S |
| X | VALVE | RANGE | 52,000 BTU'S |
| C | CAP | DRYER | 22,000 BTU'S |

MDL = 40'



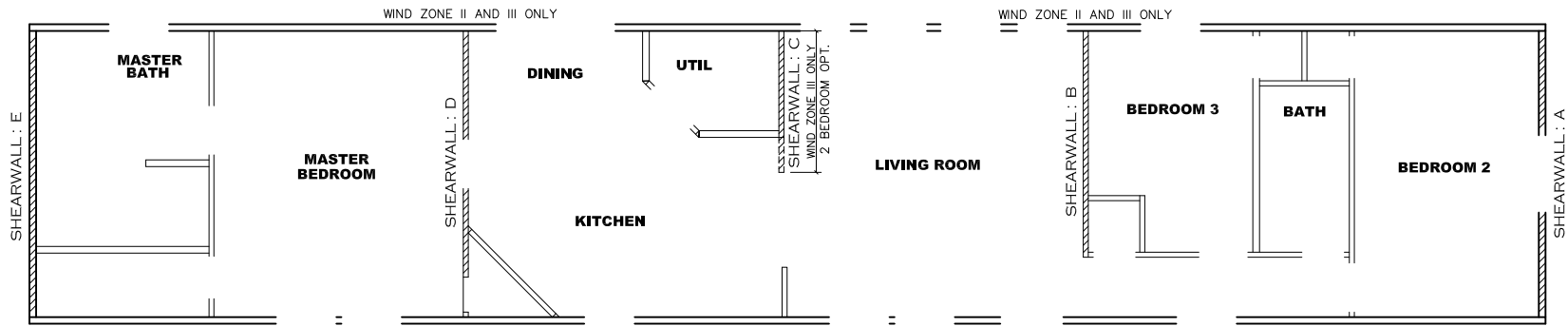
NOTES:

- 1) ALL PIPE IS 3/4" I.D. CAST (EXCEPT WHERE NOTED OTHERWISE)
- 2) MDL=MAX. DETERMINED LENGTH OF PIPE
- 3) FITTING MAY BE ADDED OR SUBTRACTED TO TRAVERSE VARIATIONS IN AXLE QUANTITY, PLACEMENT, AND FRAME TYPE.
- 4) INLET LOCATION MAY VARY TO STAY WITHIN MAX. DETERMINED LENGTH

| GAS LINE SIZE CHART | |
|---------------------|--------|
| | = 1" |
| | = 3/4" |

APPROVED **HWG** **APPROVED**
 10 SEP 2020
 FP-16-2950
 Federal Manufactured
 Home Construction
 And Safety Standards

| | |
|------------------------------------------------|--------------------------------------------------|
| 1140 SQ.FT. (STD PLAN "CONDITIONED") | |
| N/A SQ.FT. (W/OPT. PORCH/RECESS "CONDITIONED") | |
| CMH MANUFACTURING | Model #: ANN167631 Date: 9/9/20 Scale: NTS |
| Product Designer: E. HARDWICK | Drawing #: 295107 |
| 16 X 76 ANNIVERSARY | |
| GAS LINE DETAIL | |



Model # 29s107-8ft

Box Width = 180 " Single wide No Offset Box
 Box Length = 76 ft. 95.5" 12" MIN. IBEAM No Clerestory
 No Skylights No Origami Dormer
 No Porches No Sunken Floor
 Joist Size = #2 sp 2x6 Lags 9Mx3" No Parapet Roof

Minimum Joist Spacing 16 "

Version R13.13

Wind Zone 1 Standard Roof (3/8" sheathing only with 15 gax 1.5" at 5"/10" oc. (197 plf) Chords: 2x4 SPF #3 Top Plate & 2x4 Rail. Each spliced w/ 12" glue block. 96 inch sidewall

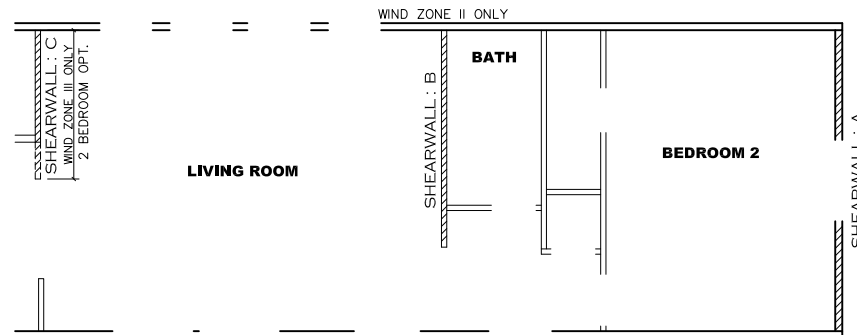
| Shearwall | Dist./ Hitch | Length | PLF | # of Joists | Lags | Notes | SW1/SW2 |
|-----------|--------------|----------|-----|-------------|------|-------------------|-------------|
| A | 0' | 125.625" | 425 | 2 | 4/4 | Split Shearwall * | 62.75/62.87 |
| E | 76' | Full | 162 | 2 | 2/2 | | |

Wind Zone 2 Standard Roof (3/8" & ceiling with 15 gax 1.5" at 5"/10" oc. (267 plf) Chords: 2x4 SPF #3 Top Plate & 2x4 Rail. Each spliced w/ 12" glue block. 96 inch sidewall

| Shearwall | Dist./ Hitch | Length | PLF | # of Joists | Lags | Notes | SW1/SW2 |
|-----------|--------------|----------|-----|-------------|------|------------------------|--------------|
| A | 0' | 125.625" | 425 | 2 | 4/4 | Split Shearwall * | 62.75/62.87 |
| B | 23.04' | 136" | 425 | 2 | 4/1 | | |
| D | 54.12' | 118.5" | 515 | 3 | 4/4 | Split-Island Shearwall | 65.25/53.2ft |
| E | 76' | 128" | 162 | 2 | 2/1 | | |

Wind Zone 3 Standard Roof (3/8" sheathing only with 15 gax 1.5" at 5"/10" oc. (197 plf) Chords: 2x4 SPF #3 Top Plate & 2x4 Rail. Each spliced w/ 12" glue block. 96 inch sidewall

| Shearwall | Dist./ Hitch | Length | PLF | # of Joists | Lags | Notes | SW1/SW2 |
|-----------|--------------|----------|-----|-------------|------|------------------------|--------------|
| A | 0' | 125.625" | 425 | 2 | 4/4 | Split Shearwall * | 62.75/62.87 |
| B | 23.04' | 128" | 515 | 3 | 5/2 | | |
| D | 54.12' | 118.5" | 515 | 3 | 4/4 | Split-Island Shearwall | 65.25/53.2ft |
| E | 76' | 156" | 162 | 2 | 2/1 | | |



Model # 29s107-2BR CPT-8ft

Box Width = 180 " Single wide No Offset Box
 Box Length = 76 ft. 95.5" 12" MIN. IBEAM No Clerestory
 No Skylights No Origami Dormer
 No Porches No Sunken Floor
 Joist Size = #2 sp 2x6 Lags 9Mx3" No Parapet Roof

Minimum Joist Spacing 16 "

2 BEDROOM OPT.

Version R13.13

Wind Zone 1 Standard Roof (3/8" sheathing only with 15 gax 1.5" at 5"/10" oc. (197 plf) Chords: 2x4 SPF #3 Top Plate & 2x4 Rail. Each spliced w/ 12" glue block. 96 inch sidewall

| Shearwall | Dist./ Hitch | Length | PLF | # of Joists | Lags | Notes | SW1/SW2 |
|-----------|--------------|----------|-----|-------------|------|-------------------|-------------|
| A | 0' | 125.625" | 425 | 2 | 4/4 | Split Shearwall * | 62.75/62.87 |
| E | 76' | Full | 162 | 2 | 2/2 | | |

Wind Zone 2 Standard Roof (3/8" & ceiling with 15 gax 1.5" at 5"/10" oc. (267 plf) Chords: 2x4 SPF #3 Top Plate & 2x4 Rail. Each spliced w/ 12" glue block. 96 inch sidewall

| Shearwall | Dist./ Hitch | Length | PLF | # of Joists | Lags | Notes | SW1/SW2 |
|-----------|--------------|----------|-----|-------------|------|------------------------|--------------|
| A | 0' | 125.625" | 162 | 2 | 2/2 | Split Shearwall * | 62.75/62.87 |
| B | 18.96' | 120" | 425 | 3 | 4/1 | | |
| D | 54.13' | 118.5" | 515 | 3 | 4/4 | Split-Island Shearwall | 65.25/53.2ft |
| E | 76.01' | 128" | 162 | 2 | 2/1 | | |

Wind Zone 3 Standard Roof (3/8" sheathing only with 15 gax 1.5" at 5"/10" oc. (197 plf) Chords: 2x4 SPF #3 Top Plate & 2x4 Rail. Each spliced w/ 12" glue block. 96 inch sidewall

| Shearwall | Dist./ Hitch | Length | PLF | # of Joists | Lags | Notes | SW1/SW2 |
|-----------|--------------|----------|-----|-------------|------|------------------------|--------------|
| A | 0' | 125.625" | 425 | 2 | 4/4 | Split Shearwall * | 62.75/62.87 |
| B | 18.96' | 120" | 425 | 3 | 4/1 | | |
| C | 38.3' | 80" | 515 | 8 | 3/2 | | |
| D | 54.12' | 118.5" | 425 | 2 | 3/3 | Split-Island Shearwall | 65.25/53.2ft |
| E | 75.99' | 156" | 162 | 2 | 2/1 | | |

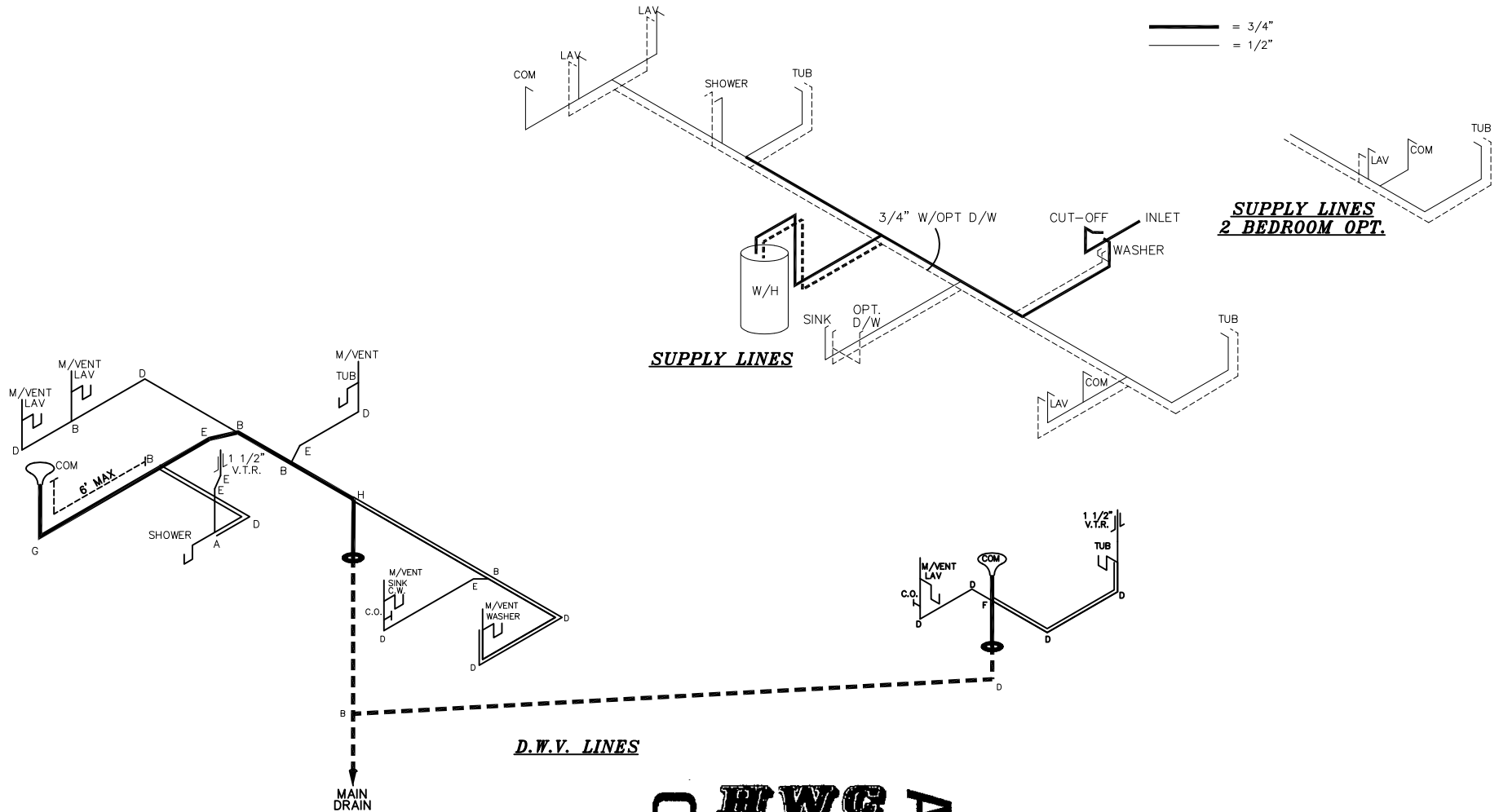
APPROVED **HWC** **APPROVED**
 10 SEP 2020
 FP-16-2950
 Federal Manufactured Home Construction And Safety Standards

1140 SQ.FT. (STD PLAN "CONDITIONED")
 N/A SQ.FT. (W/OPT. PORCH/RECESS "CONDITIONED")

| | | |
|-------------------------------|--------------------|---------------------|
| CMH MANUFACTURING | Model #: ANN167631 | Drawing #: |
| | Date: 9/9/20 | Scale: NTS |
| Product Designer: E. HARDWICK | | 16 X 76 ANNIVERSARY |
| SHEARWALL PAGE | | |

NOTE:
DASHED LINES INDICATE HOT WATER
SOLID LINES INDICATE COLD WATER

— = 3/4"
— = 1/2"



| LEGEND | |
|--------|------------------------|
| A | SHORT TURN T-Y |
| B | LONG TURN T-Y |
| C | 1/4 BEND |
| D | LONG SWEEP 1/4 BEND |
| E | 45 ELL |
| F | DBL. SANITARY TEE |
| G | 4x3 CLOSET ELL |
| H | DOUBLE ELL |
| I | 22 1/2" ELL |
| J | 45° Y |
| K | LONG TURN STREET ELBOW |
| L | 45 FTG. ELL |

| DWV LINE SIZE CHART | |
|---------------------|----------|
| — | = 3" |
| — | = 2" |
| — | = 1 1/2" |

APPROVED **HWC** **APPROVED**
 10 SEP 2020
 FP-16-2950
 Federal Manufactured
 Home Construction
 And Safety Standards

| | |
|------------------------------------------------|------------------------------------|
| 1140 SQ.FT. (STD PLAN "CONDITIONED") | |
| N/A SQ.FT. (W/OPT. PORCH/RECESS "CONDITIONED") | |
| CMH MANUFACTURING | Model #: ANN167631 Date: 9/9/20 |
| Scale: NT5 | Drawing #: 295107 |
| Product Designer: E. HARDWICK | |
| 16 X 76 ANNIVERSARY | |
| D.W.V. and Supply Lines | |