

LENGTH OF WIRE TO PANEL BOX:  
 FURNACE 15'-4"  
 DRYER 10'-4"  
 RANGE 44'-10"

	= 12-2 WIRE (WALL)
	= 14-2 WIRE (WALL)
	= 12-2 WIRE (CEILING)
	= 14-2 WIRE (CEILING)
	= 14-3 WIRE (CEILING)
	= FURNACE/RANGE/DRYER (FLOOR)
	= CROSSOVER

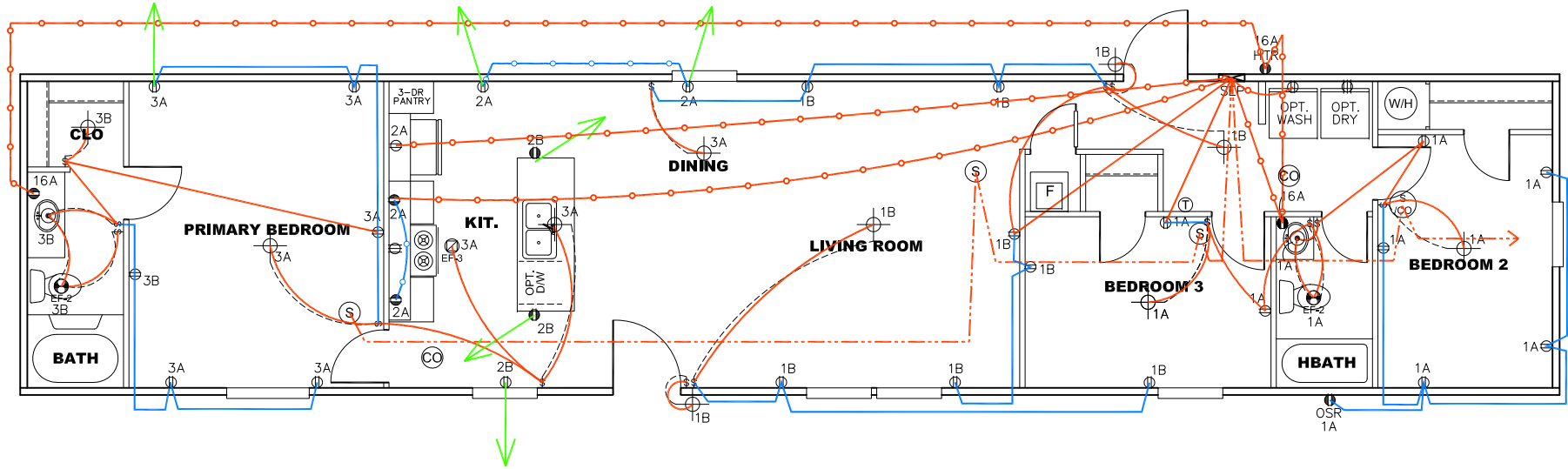
1080 SQ.FT. (STD PLAN "CONDITIONED")  
 N/A SQ.FT. (W/OPT. PORCH/RECESS "CONDITIONED")

<b>CMH</b> MANUFACTURING	Model #: SSP16723A	Drawing #:
	Date: 10/24/22	Scale: N/A
Product Designer: E HARDWICK		16' x 72' Coastal Breeze

**FLOOR PLAN**

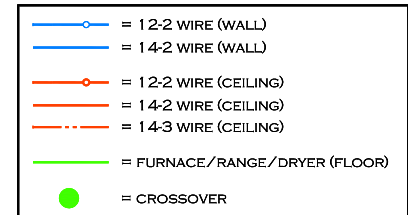
1 REVISION ECR- 3136  
 11/3/22 EH

CIRCUIT	CIRCUIT #	WIRE	BREAKER	CIRCUIT	CIRCUIT #	WIRE	BREAKER	CIRCUIT	CIRCUIT #	WIRE	BREAKER
LIGHT/RECEP	1A, 1B, 3A, 3B	14-2	15-SP	WATER HEATER	4A, 6B	SEE NOTE #8		BATHROOM	16A	12-2	20-SP
KITCHEN/DINING	2A, 2B	12-2	20-SP	RANGE	5B, 7A	SEE NOTE #8		OPT G/D/ISP	9B	SEE NOTE #8	
WASHER	12A	12-2	20-SP	OPT GAS RANGE	15B	SEE NOTE #8		OPT SPA/ WP/JAC	11A, B	SEE NOTE #8	
DRYER	5A, 7B	SEE NOTE #8		FURNACE	6A, 8A, B, 10A, B	SEE NOTE #8		FREEZER	N/A	SEE NOTE #8	
				OPT DW/WASH	9A	SEE NOTE #8					
				SMOKE ALARM	4B	SEE NOTE #8					



NOTES:

- ALL CIRCUITS SHOWN ARE FOR REFERENCE AND MAY BE CHANGED BASED ON OPTIONAL COMPONENTS INSTALLED IN THE HOME.
- REFER TO DAPIA MANUAL FOR SYMBOL CHART.
- EITHER LIGHT OR RECEPTACLE MUST CONNECT TO SWITCH.
- EF-1= 50 CFM EXHAUST FAN REQUIRED FOR THERMAL ZONE III  
THERMAL ZONES I & II MAY USE FAN OR WINDOW W/1.5 SQ. FT. OPENABLE GLASS.
- EF-2= 50 CFM EXHAUST FAN REQUIRED THERMAL ZONE I, II, AND III.
- EF-3= 100 CFM RANGE EXHAUST FAN, SWITCH AT HOOD.
- EF-4= WHOLE HOUSE VENTILATION REQUIREMENTS PER DAPIA MANUAL.
- REFER TO DAPIA MANUAL OR THE MFG. INSTALLATION INSTRUCTIONS FOR PROPER WIRE SIZE AND BREAKER SIZE FOR SPECIFIC APPLIANCE AND MODEL BEING INSTALLED.
- ALL SMOKE ALARMS TO BE LOCATED ON THE CEILING.
- CARBON MONOXIDE ALARMS ARE ONLY REQUIRED WHEN HOME HAS EITHER FUEL BURNING APPLIANCES, IS GARAGE READY OR IS BASEMENT READY. REFERENCE DAPIA MANUAL FOR ADDITIONAL INFORMATION.
- DIMENSIONS SHOWN ON PRINT ARE APPROXIMATE AND TO BE USED ONLY AS A GUIDELINE.



1080 SQ.FT. (STD PLAN "CONDITIONED")  
N/A SQ.FT. (W/OPT. PORCH/RECESS "CONDITIONED")

<b>CMH</b> MANUFACTURING	Model #: SSP16723A	Drawing #:
	Date: 10/24/22 Scale: N/A	29-115044
Product Designer: E HARDWICK		16' x 72' Coastal Breeze

**ELECTRICAL PLAN-06**

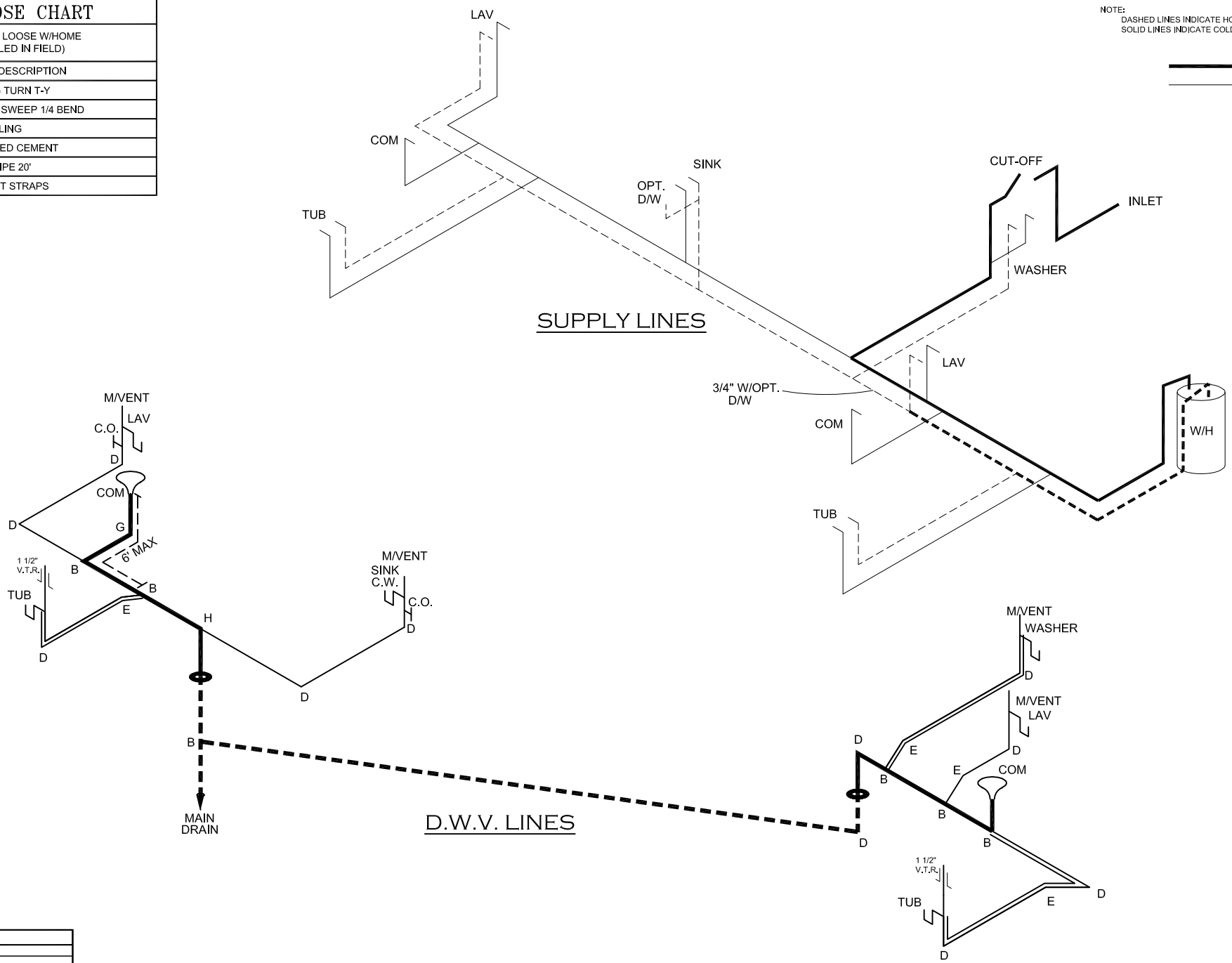
REVISION 11/3/22 ECR- 3136  
EH



SHIP LOOSE CHART	
PARTS SHIPPED LOOSE W/HOME (TO BE INSTALLED IN FIELD)	
QUANTITY	DESCRIPTION
1	(B) 3" LONG TURN T-Y
1	(D) 3" LONG SWEEP 1/4 BEND
1	3" COUPLING
1	APPROVED CEMENT
2	3" ABS PIPE 20'
varies	SUPPORT STRAPS

NOTE:  
DASHED LINES INDICATE HOT WATER  
SOLID LINES INDICATE COLD WATER

— = 3/4"  
— = 1/2"



LEGEND	
A	SHORT TURN T-Y
B	LONG TURN T-Y
C	1/4 BEND
D	LONG SWEEP 1/4 BEND
E	45 ELL
F	DBL. SANITARY TEE
G	4x3 CLOSET ELL
H	DOUBLE ELL
I	22 1/2° ELL
J	45° Y
K	LONG TURN STREET ELBOW

DWV LINE SIZE CHART	
—	= 3"
—	= 2"
—	= 1 1/2"

1080 SQ.FT. (STD PLAN "CONDITIONED")  
N/A SQ.FT. (W/OPT. PORCH/RECESS "CONDITIONED")

<b>CMH</b> MANUFACTURING	Model #: SSP16723A	Drawing #:
	Date: 10/24/22	Scale: N/A
Product Designer: E HARDWICK		16' x 72' Coastal Breeze
<b>D.W.V. and Supply Lines</b>		<b>REVISION</b> ECR-3192 11/15/22 BH