

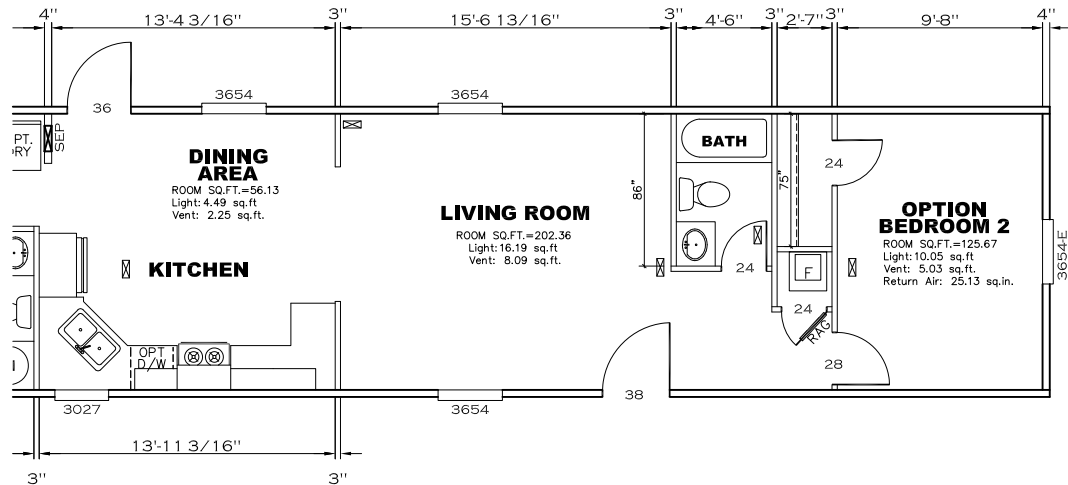
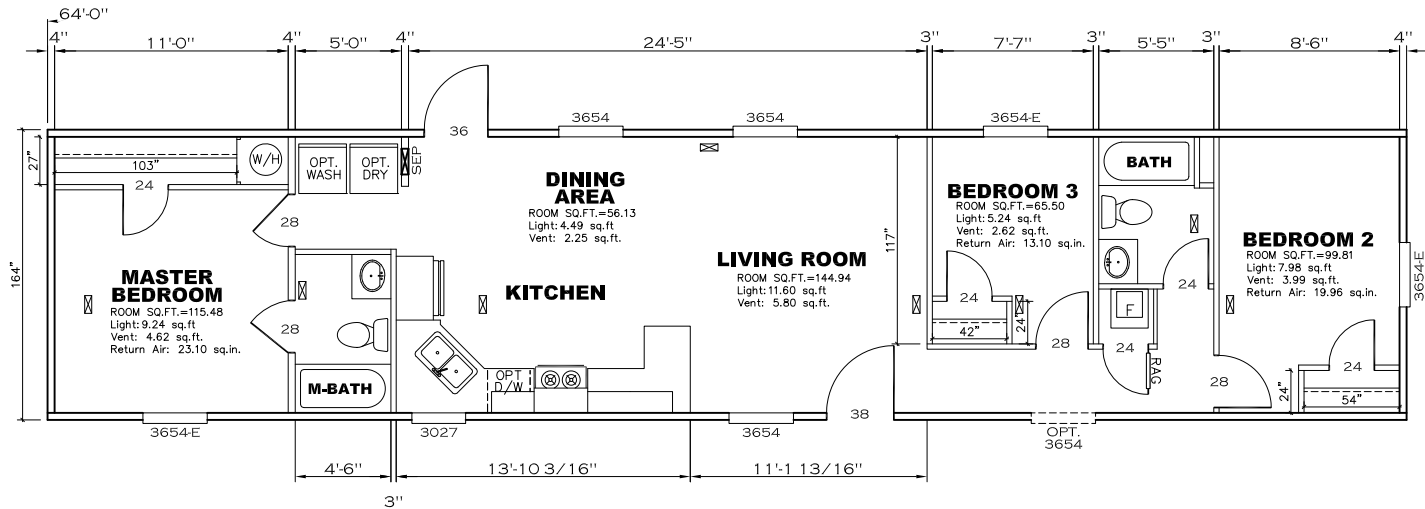
NOTES:

1. ALL CIRCUITS SHOWN ARE FOR REFERENCE AND MAY BE CHANGED BASED ON OPTIONAL COMPONENTS INSTALLED IN THE HOME.
2. REFER TO EL SECTION OF THE DAPIA FOR SYMBOL CHART.
3. EITHER LIGHT OR RECEPTACLE MUST CONNECT TO SWITCH.
4. EF-1= 50 CFM EXHAUST FAN REQUIRED FOR THERMAL ZONE III THERMAL ZONES I & II MAY USE FAN OR WINDOW W/1.5 SQ. FT. OPENABLE GLASS.
5. EF-2= 50 CFM EXHAUST FAN REQUIRED THERMAL ZONE I, II, AND III.
6. EF-3= 100 CFM RANGE EXHAUST FAN, SWITCH AT HOOD.
7. EF-4= WHOLE HOUSE VENTILATION PER REQUIREMENTS IN S-HV-10 & 10A OR M-HV-11 & 11A OF DAPIA.
8. REFER TO EL SECTION OF THE DAPIA OR THE MFG. INSTALLATION INSTRUCTIONS FOR PROPER WIRE SIZE AND BREAKER SIZE FOR SPECIFIC APPLIANCE AND MODEL BEING INSTALLED.
9. ALL SMOKE ALARMS TO BE LOCATED ON THE CEILING.
10. DIMENSIONS SHOWN ON PRINT ARE APPROXIMATE AND TO BE USED ONLY AS A GUIDELINE.

CIRCUIT	CIRCUIT #	WIRE	BREAKER	CIRCUIT	CIRCUIT #	WIRE	BREAKER	CIRCUIT	CIRCUIT #	WIRE	BREAKER
LIGHT/RECEP	1A,1B,3A,3B	14-2	15-SP	WATER HEATER	4A,6B	SEE NOTE #8		BATHROOM	16 A	12-2	20-SP
KITCHEN	2A,2B	12-2	20-SP	RANGE	5B,7A	SEE NOTE #8		OPT C/DISP	9B	SEE NOTE #8	
WASHER	12A	12-2	20-SP	FURNACE	6A,8A,B,10A,B	SEE NOTE #8		OPT SPA7 WP/JAC	11A,B	SEE NOTE #8	
DRYER	5A,7B	SEE NOTE #8		OPT D/WASH	9A	SEE NOTE #8		FREEZER	N/A	SEE NOTE #8	
				SMOKE ALARM	4B	SEE NOTE #8					

874 SQ.FT. (STD PLAN "CONDITIONED")
N/A SQ.FT. (W/OPT. PORCH/RECESS "CONDITIONED")

CMH MANUFACTURING	Model #: SPC14643A	Drawing #:
	Date: 7/8/16	Scale: NTS
Product Designer: E. HARDWICK		14' x 64' BUILDER SPECIAL
ELECTRICAL PLAN-06		REVISION 5/31/18 BH



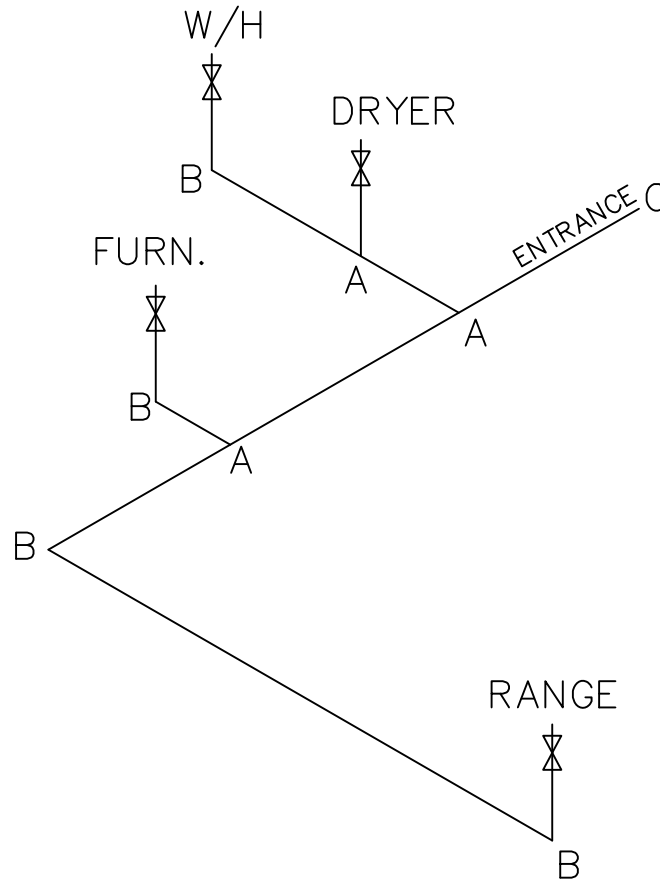
APPROVED
HWC
REVISED
21 JAN 2020
FP-14-1167
Federal Manufactured
Home Construction
And Safety Standards
APPROVED

874 SQ.FT. (STD PLAN "CONDITIONED")
N/A SQ.FT. (W/OPT. PORCH/RECESS "CONDITIONED")

CMH MANUFACTURING	Model #: SPC14G43A	Drawing #:
	Date: 7/8/16	Scale: NTS 295095
Product Designer: E. HARDWICK		14' x 64' BUILDER SPECIAL
FLOOR PLAN		5 REVISION ECR-707463 10/24/18 EH

LEGEND		APPLIANCE BTU's RATINGS MAX. INPUT	
SYM	FITTINGS		
A	TEE	FURNACE	70,000 BTU'S
B	90 ELL	W/H	37,000 BTU'S
X	VALVE	RANGE	54,000 BTU'S
C	CAP	DRYER	22,000 BTU'S

MDL=23'



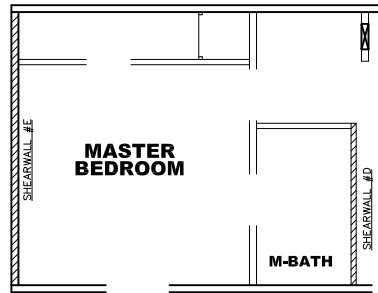
NOTES:

- 1) ALL PIPE IS 3/4" I.D.CAST (EXCEPT WHERE NOTED OTHERWISE)
- 2) MDL=MAX. DETERMINED LENGTH OF PIPE
- 3) FITTING MAY BE ADDED OR SUBTRACTED TO TRAVERSE VARIATIONS IN AXLE QUANTITY, PLACEMENT, AND FRAME TYPE.
- 4) INLET LOCATION MAY VARY TO STAY WITHIN MAX. DETERMINED LENGTH

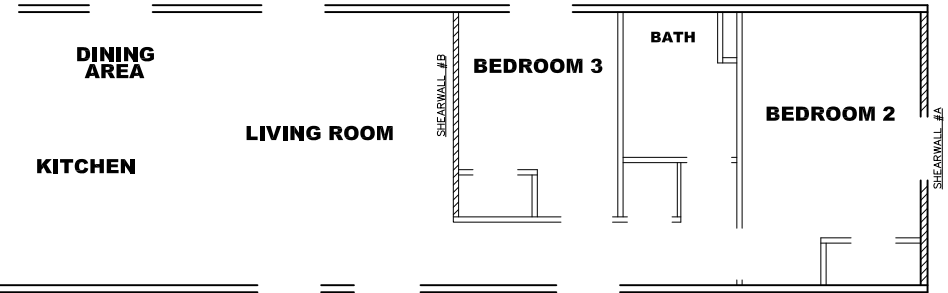
GAS LINE SIZE CHART	
	= 1"
	= 3/4"

APPROVED **RWC** **APPROVED**
 JULY 18 2016
 FP-14-1167
 Federal Manufactured
 Home Construction
 And Safety Standards

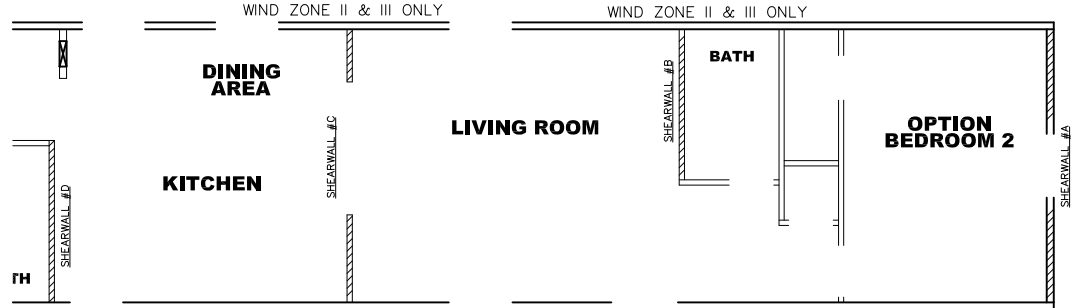
874 SQ.FT. (STD PLAN "CONDITIONED")	
N/A SQ.FT. (W/OPT. PORCH/RECESS "CONDITIONED")	
CMH MANUFACTURING	Model #: SPC14643A Date: 7/8/16 Scale: NTS
Product Designer: E. HARDWICK	Drawing #: 295095
14' x 64' BUILDER SPECIAL	
GAS LINE DETAIL	



WIND ZONE II & III ONLY



WIND ZONE II & III ONLY



WIND ZONE II & III ONLY

Model # 29s095-8ft

Minimum Joist Spacing 16"

Box Width = 164" Single wide No Offset Box
 Box Length = 64 ft. 95.5" 12" MIN. IBEAM No Clerestory
 No Skylights No Origami Dormer
 No Porches No Sunken Floor
 Joist Size = #2 spf 2x6 Lags 9Mx3" No Parapet Roof

Version R13.8

Wind Zone 1 Standard Roof (3/8" sheathing only with 15 gax 1.5" at 5"/10" oc. (197 plf) Chords: #3 2x4 plate w/ 2x4 rail spliced w/ 12" glue block. 96 inch sidewall

Shearwall	Dist./ Hitch	Length	PLF	# of Joists	Lags	Notes	SW1/SW2
A	0'	119.625"	425	4	4/4	Split Shearwall	59.875/59.7
E	64'	144"	162	2	2/1		

Wind Zone 2 Standard Roof (3/8" sheathing only with 15 gax 1.5" at 5"/10" oc. (197 plf) Chords: #3 2x4 plate w/ 2x4 rail spliced w/ 12" glue block. 96 inch sidewall

Shearwall	Dist./ Hitch	Length	PLF	# of Joists	Lags	Notes	SW1/SW2
A	0'	119.625"	425	4	4/4	Split Shearwall	59.875/59.7
B	22.46'	112"	425	3	4/1		
D	47.71'	92"	425	6	3/1		
E	64'	96"	162	2	1/1		

Wind Zone 3 Standard Roof (3/8" sheathing only with 15 gax 1.5" at 5"/10" oc. (197 plf) Chords: #3 2x4 plate w/ 2x4 rail spliced w/ 12" glue block. 96 inch sidewall

Shearwall	Dist./ Hitch	Length	PLF	# of Joists	Lags	Notes	SW1/SW2
A	0'	119.625"	425	4	4/4	Split Shearwall	59.875/59.7
B	22.46'	112"	515	4	4/2		
D	47.71'	92"	515	7	3/1		
E	64'	116"	162	2	2/1		

Model # 29s095-2BR-OPT-8ft

Minimum Joist Spacing 16"

Box Width = 164" Single wide No Offset Box
 Box Length = 64 ft. 95.5" 12" MIN. IBEAM No Clerestory
 No Skylights No Origami Dormer
 No Porches No Sunken Floor
 Joist Size = #2 spf 2x6 Lags 9Mx3" No Parapet Roof

Version R13.8

Wind Zone 1 Standard Roof (3/8" sheathing only with 15 gax 1.5" at 5"/10" oc. (197 plf) Chords: #3 2x4 plate w/ 2x4 rail spliced w/ 12" glue block. 96 inch sidewall

Shearwall	Dist./ Hitch	Length	PLF	# of Joists	Lags	Notes	SW1/SW2
A	0'	119.625"	425	4	4/4	Split Shearwall	59.75/59.87
E	64'	144"	162	2	2/1		

Wind Zone 2 Standard Roof (3/8" sheathing only with 15 gax 1.5" at 5"/10" oc. (197 plf) Chords: #3 2x4 plate w/ 2x4 rail spliced w/ 12" glue block. 96 inch sidewall

Shearwall	Dist./ Hitch	Length	PLF	# of Joists	Lags	Notes	SW1/SW2
A	0'	119.625"	162	2	2/2	Split Shearwall	59.75/59.87
B	17.71'	76"	425	6	2/1		
C	33.53'	80"	425	4	2/2	Split Shearwall	30/50
D	47.71'	92"	324	4	2/1		
E	64'	96"	162	2	1/1		

Wind Zone 3 Standard Roof (3/8" sheathing only with 15 gax 1.5" at 5"/10" oc. (197 plf) Chords: #3 2x4 plate w/ 2x4 rail spliced w/ 12" glue block. 96 inch sidewall



Shearwall	Dist./ Hitch	Length	PLF	# of Joists	Lags	Notes	SW1/SW2
A	0'	119.625"	425	4	4/4	Split Shearwall	59.75/59.87
B	17.71'	76"	515	7	3/2		
C	33.53'	80"	425	4	2/2	Split Shearwall	30/50
D	47.71'	84"	425	6	3/1		
E	64'	116"	162	2	2/1		

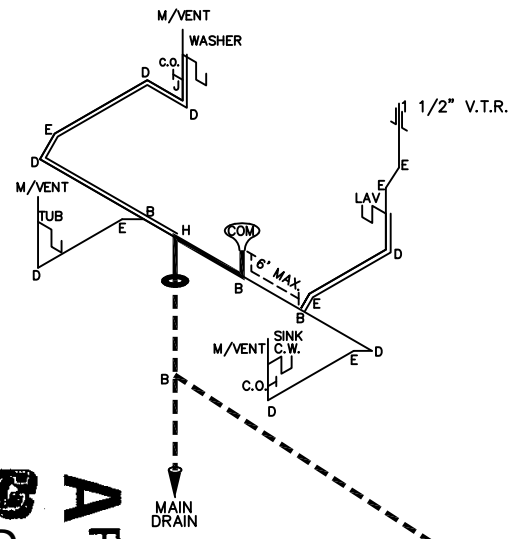
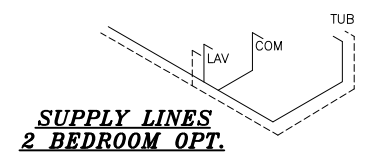
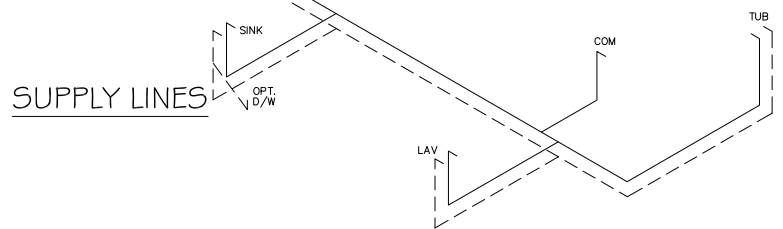
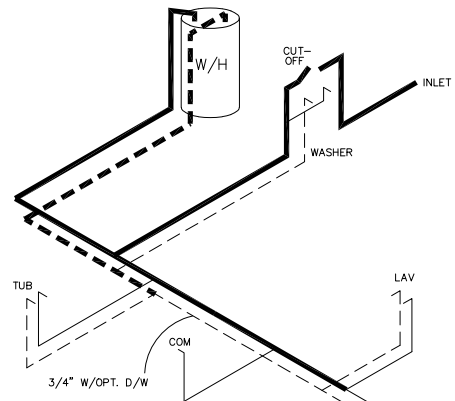
APPROVED **HWC** **APPROVED**
 REVISED
 08 JAN 2020
 FP-14-1167
 Federal Manufactured
 Home Construction
 And Safety Standards

874 SQ.FT. (STD PLAN "CONDITIONED")
 N/A SQ.FT. (W/OPT. PORCH/RECESS "CONDITIONED")

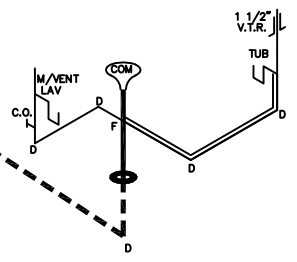
CMH MANUFACTURING	Model #: SPC14643A	Drawing #:
	Date: 7/8/16	Scale: NTS
Product Designer: E. HARDWICK		14' x 64' BUILDER SPECIAL
8' SHEARWALL		

NOTE:
 DASHED LINES INDICATES HOT WATER
 SOLID LINES INDICATES COLD WATER

 = 3/4"
 = 1/2"






D.W.V. LINES



APPROVED **HWG** **APPROVED**
 REVISED
 08 JAN 2020
 FP-14-1167
 Federal Manufactured
 Home Construction
 And Safety Standards

LEGEND	
A	SHORT TURN T-Y
B	LONG TURN T-Y
C	1/4 BEND
D	LONG SWEEP 1/4 BEND
E	45 ELL
F	DBL. SANITARY TEE
G	4x3 CLOSET ELL
H	DOUBLE ELL
I	22 1/2° ELL
J	45° Y
K	LONG TURN STREET ELBOW
L	45 FTG ELL

DWV LINE SIZE CHART	
	= 3"
	= 2"
	= 1 1/2"

874 SQ.FT. (STD PLAN "CONDITIONED")
 N/A SQ.FT. (W/OPT. PORCH/RECESS "CONDITIONED")

CMH MANUFACTURING	Model #: SPC14643A	Drawing #:
	Date: 7/8/16	Scale: NTS 295095
Product Designer: E. HARDWICK		14' x 64' BUILDER SPECIAL

D.W.V. and Supply Lines

REVISION **BCR-866518**
 8/15/16 **EH**