

Duct Design Input

Model 2 BR OPT **Mfg.** CMH-MFG-929 **Date** 3/22/2019 **Source** 29s100

Design Type	Flow Direction	Plenum Connection	Plenum Location	Plenum Width X Plenum Length
Single-section	Down Flow	Direct to a Trunk	Floor A	13 X 13 (Sqr. in)

Note: all the unspecified dimensions are in inches.

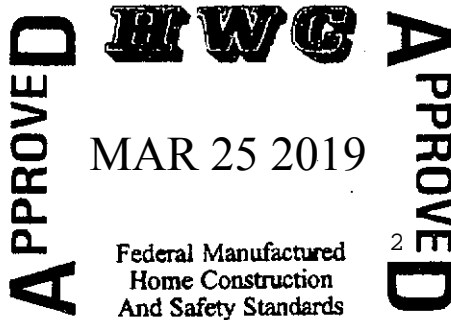
Floor A	Vertical	Material	Trunk H	Trunk W					
	First Floor	Aluminum	5	14					
	Direction	Distance(ft)	Boot Type	Boot H/D	Boot W	Boot L (ft)	Reg. Type	Register H	Register W
	Left 1	1.75	Flex (Inline)	6	N/A	3.75	Boot Reg.	4	10
	Left 2	4.75	Reg. Boot	4	10	0.5	Boot Reg.	4	10
	Left 3	18.25	Flex (Inline)	6	N/A	5.5	Boot Reg.	4	10
	Left 4	4.25	Reg. Boot	4	10	0.5	Boot Reg.	4	10
	Left 5	11.75	Flex (Inline)	6	N/A	5.25	Boot Reg.	4	10
	Left 6	1.5	Reg. Boot	4	10	0.5	Boot Reg.	4	10
	Left 7	11.25	Reg. Boot	4	10	0.5	Boot Reg.	4	10
	Left 8	5	Flex (T)	6	N/A	2	Boot Reg.	4	10
	Right 1	1.75	Reg. Boot	4	10	0.5	Boot Reg.	4	10
	Right 2	9.5	Reg. Boot	4	10	0.5	Boot Reg.	4	10

Duct Design Performance

The refrigerated air cooling supply duct system including registers must be capable of handling at least 300 cfm per 10,000 Btuh with a static pressure no greater than 0.3 inches of water when measured at room temperature-HUD Manufactured Home Construction and Safety Standards, Part 3280.715 (a) (3) (ii)

Performance Calculated at a Static Pressure of 0.3 in. wc.

Air Flow Rate (SCFM)	1144	Duct Capacity (Btu/Hr)	38100
----------------------	------	------------------------	-------



Duct Design Input

Model _____ **Mfg.** CMH-MFG-929 **Date** 8/8/2018 **Source** 29s100

Design Type	Flow Direction	Plenum Connection	Plenum Location	Plenum Width X Plenum Length
Single-section	Down Flow	Direct to a Trunk	Floor A	13 X 13 (Sqr. in)

Note: all the unspecified dimensions are in inches.

Floor A	Vertical	Material	Trunk H	Trunk W					
	First Floor	Aluminum	5	14					
	Direction	Distance(ft)	Boot Type	Boot H/D	Boot W	Boot L (ft)	Reg. Type	Register H	Register W
	Left 1	1.75	Reg. Boot	4	10	0.5	Boot Reg.	4	10
	Left 2	18.5	Reg. Boot	4	10	0.5	Boot Reg.	4	10
	Left 3	11.75	Flex (Inline)	6	N/A	7.25	Boot Reg.	4	10
	Left 4	1.5	Reg. Boot	4	10	0.5	Boot Reg.	4	10
	Left 5	11.25	Reg. Boot	4	10	0.5	Boot Reg.	4	10
	Left 6	5	Reg. Boot	4	10	0.5	Boot Reg.	4	10
	Right 1	2	Reg. Boot	4	10	0.5	Boot Reg.	4	10
	Right 2	9.5	Reg. Boot	4	10	0.5	Boot Reg.	4	10
	Right 3	1.5	Reg. Boot	4	10	0.5	Boot Reg.	4	10

Duct Design Performance

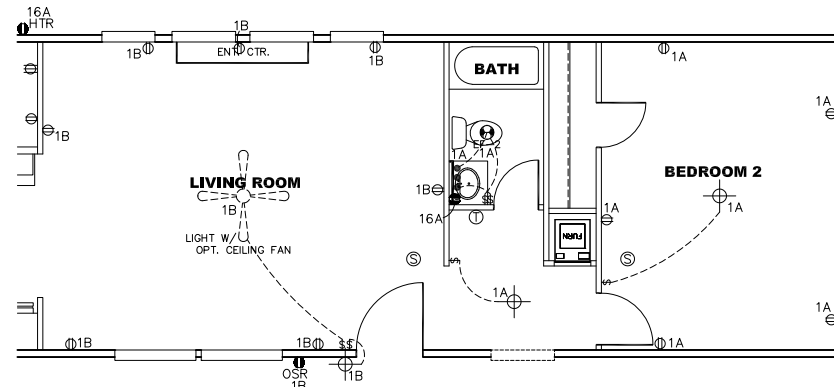
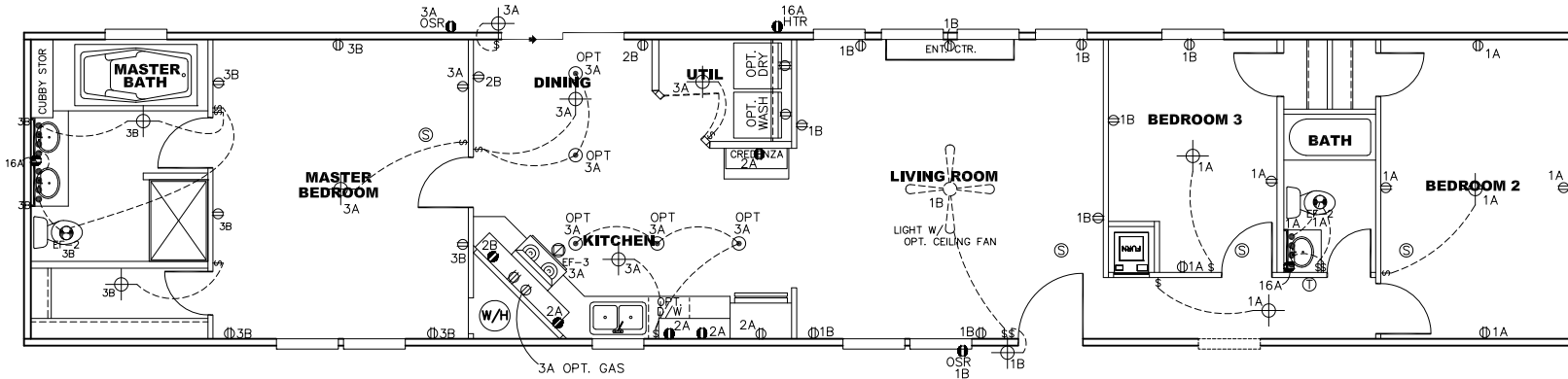
The refrigerated air cooling supply duct system including registers must be capable of handling at least 300 cfm per 10,000 Btuh with a static pressure no greater than 0.3 inches of water when measured at room temperature-HUD Manufactured Home Construction and Safety Standards, Part 3280.715 (a) (3) (ii)

Performance Calculated at a Static Pressure of 0.3 in. wc.

Air Flow Rate (SCFM)	1287	Duct Capacity (Btu/Hr)	42900
----------------------	------	------------------------	-------



CIRCUIT	CIRCUIT #	WIRE	BREAKER	CIRCUIT	CIRCUIT #	WIRE	BREAKER	CIRCUIT	CIRCUIT #	WIRE	BREAKER
LIGHT/RECEP	1A,1B,3A,3B	14-2	15-SP	WATER HEATER	4A,6B	SEE NOTE #8		BATHROOM	16A	12-2	20-SP
KITCHEN	2A,2B	12-2	20-SP	RANGE	5B,7A	SEE NOTE #8		OPT G/DISP	9B	SEE NOTE #8	
WASHER	12A	12-2	20-SP	FURNACE	6A,8A,B,10A,B	SEE NOTE #8		OPT SPA/WP/JAC	11A,B	SEE NOTE #8	
DRYER	5A,7B	SEE NOTE #8		OPT D/WASH	9A	SEE NOTE #8		FREEZER	N/A	SEE NOTE #8	
				SMOKE ALARM	4B	SEE NOTE #8					



NOTES:

1. ALL CIRCUITS SHOWN ARE FOR REFERENCE AND MAY BE CHANGED BASED ON OPTIONAL COMPONENTS INSTALLED IN THE HOME.
2. REFER TO EL SECTION OF THE DAPIA FOR SYMBOL CHART.
3. EITHER LIGHT OR RECEPTACLE MUST CONNECT TO SWITCH.
4. EF-1= 50 CFM EXHAUST FAN REQUIRED FOR THERMAL ZONE III THERMAL ZONES I & II MAY USE FAN OR WINDOW W/1.5 SQ. FT. OPENABLE GLASS.
5. EF-2= 50 CFM EXHAUST FAN REQUIRED THERMAL ZONE I, II, AND III.
6. EF-3= 100 CFM RANGE EXHAUST FAN, SWITCH AT HOOD.
7. EF-4= WHOLE HOUSE VENTILATION PER REQUIREMENTS IN S-HV-10 & 10A OR M-HV-11 & 11A OF DAPIA.
8. REFER TO EL SECTION OF THE DAPIA OR THE MFG. INSTALLATION INSTRUCTIONS FOR PROPER WIRE SIZE AND BREAKER SIZE FOR SPECIFIC APPLIANCE AND MODEL BEING INSTALLED.
9. ALL SMOKE ALARMS TO BE LOCATED ON THE CEILING.
10. DIMENSIONS SHOWN ON PRINT ARE APPROXIMATE AND TO BE USED ONLY AS A GUIDELINE.

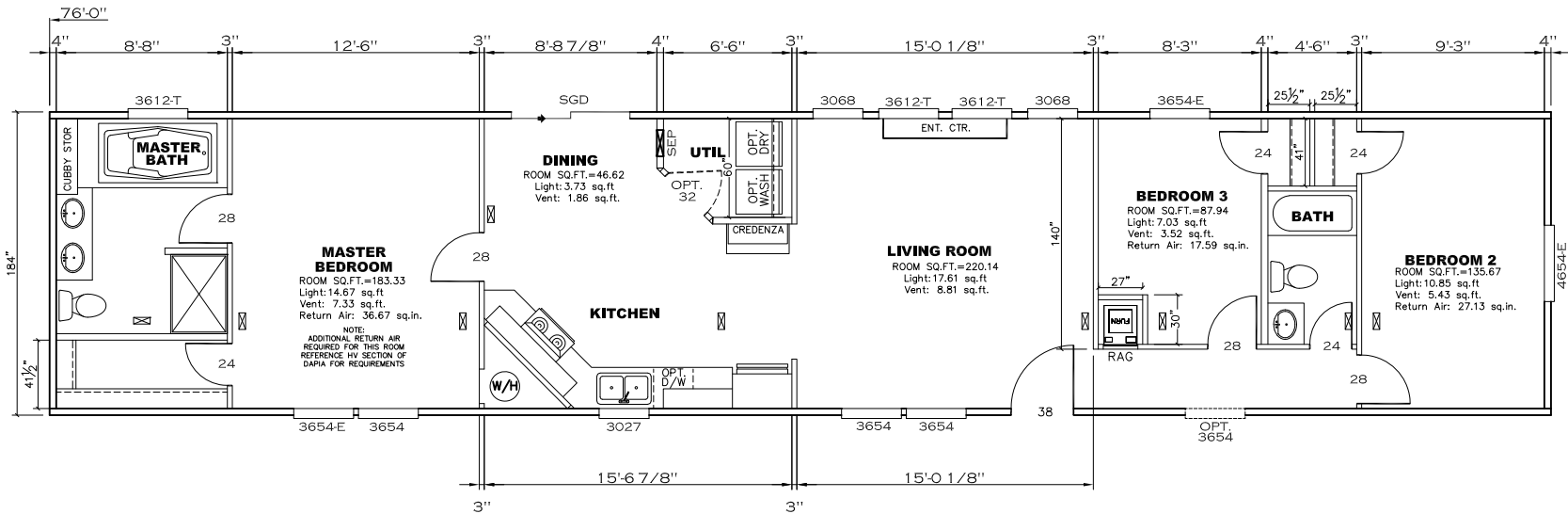
APPROVED **HWG** **APPROVED**
 REVISED
 MAR 25 2019
 Federal Manufactured
 Home Construction
 And Safety Standards

2 BEDROOM OPT.

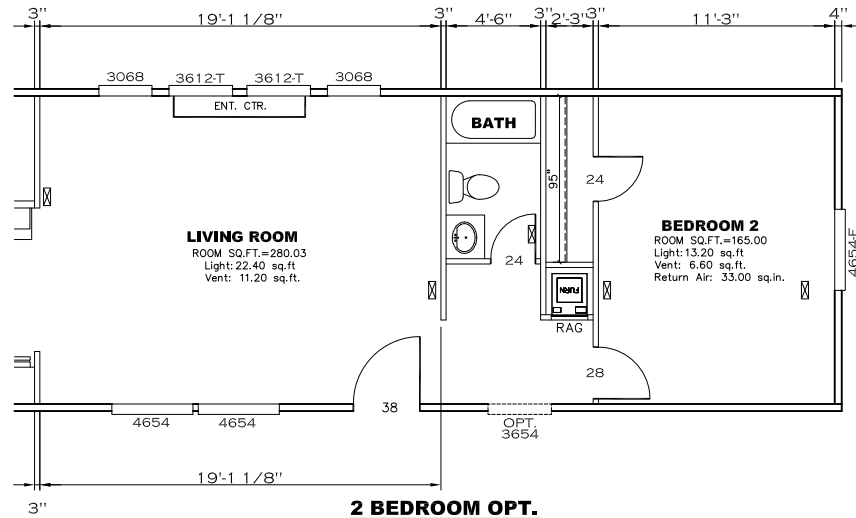
FP-16-2301

1165 SQ.FT. (STD PLAN "CONDITIONED")
 N/A SQ.FT. (W/OPT. PORCH/RECESS "CONDITIONED")

CMH MANUFACTURING	Model #: ANN16763P	Drawing #:
	Date: 6/25/18	Scale: NTS 295100
Product Designer: E. HARDWICK		16 X 76 ANNIVERSARY
ELECTRICAL PLAN-06		3 REVISION ECR-699180 10/9/18 EH



NOTE: ALL TRANSOMS INSTALLED 6' A.F.F.



APPROVED **HWG** **APPROVED**
REVISED
MAR 25 2019
Federal Manufactured
Home Construction
And Safety Standards

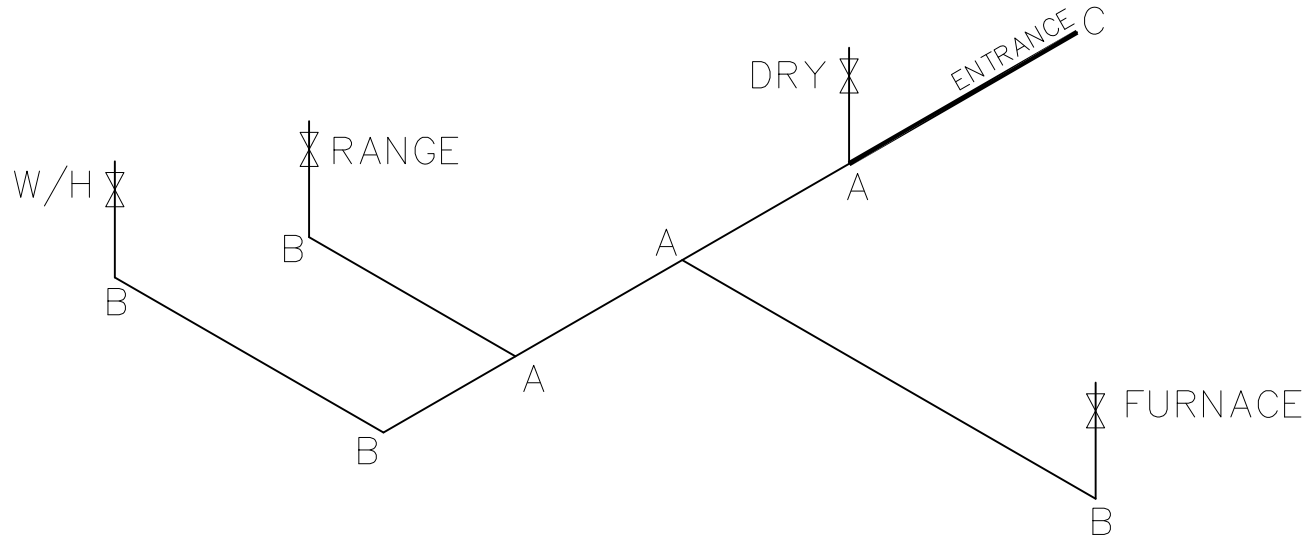
FP-16-2301

1165 SQ.FT. (STD PLAN "CONDITIONED")
N/A SQ.FT. (W/OPT. PORCH/RECESS "CONDITIONED")

CMH MANUFACTURING Product Designer: E. HARDWICK	Model #: ANN16763P	Drawing #:
	Date: 6/25/18	Scale: NTS 295100
16 X 76 ANNIVERSARY		
FLOOR PLAN		2 REVISION ECR-675891 8/22/18 EH

LEGEND		APPLIANCE BTU'S RATINGS MAX. INPUT	
SYM	FITTINGS		
A	TEE	FURNACE	65,000 BTU'S
B	90 ELL	W/H	37,000 BTU'S
X	VALVE	RANGE	52,000 BTU'S
C	CAP	DRYER	22,000 BTU'S

MDL=40'



NOTES:

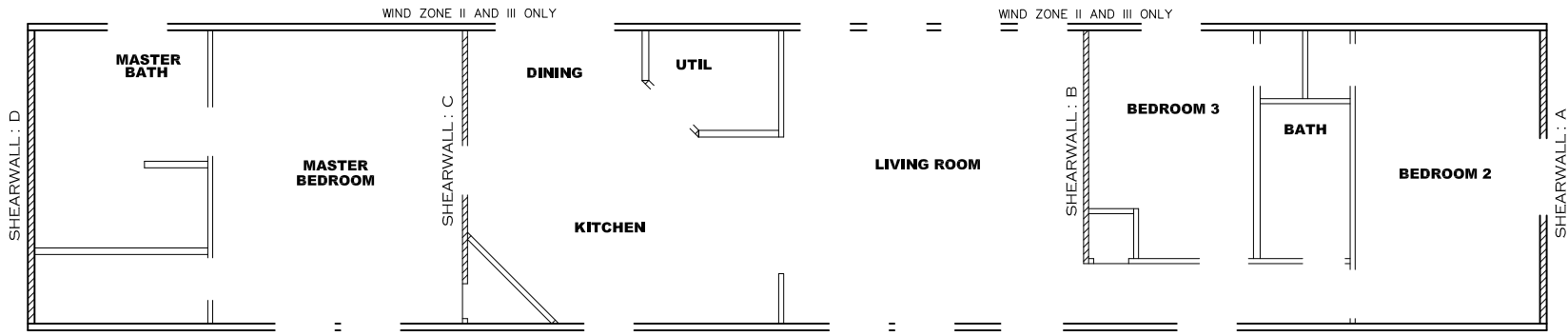
- 1) ALL PIPE IS 3/4" I.D.CAST (EXCEPT WHERE NOTED OTHERWISE)
- 2) MDL=MAX. DETERMINED LENGTH OF PIPE
- 3) FITTING MAY BE ADDED OR SUBTRACTED TO TRAVERSE VARIATIONS IN AXLE QUANTITY, PLACEMENT, AND FRAME TYPE.
- 4) INLET LOCATION MAY VARY TO STAY WITHIN MAX. DETERMINED LENGTH

GAS LINE SIZE CHART	
	= 1"
	= 3/4"

APPROVED
HWG
 REVISED
 MAR 25 2019
 Federal Manufactured
 Home Construction
 And Safety Standards
APPROVED

FP-16-2301

1165 SQ.FT. (STD PLAN "CONDITIONED")	
N/A SQ.FT. (W/OPT. PORCH/RECESS "CONDITIONED")	
CMH MANUFACTURING	Model #: ANN16763P Date: 6/25/18 Scale: NTS
Product Designer: E. HARDWICK	Drawing #: 295100
16 X 76 ANNIVERSARY	
GAS LINE DETAIL	



Model # 29s100-8ft

Box Width = 184 " Single wide Minimum Joist Spacing 16 "
 Box Length = 76 ft. 95.5" 12" MIN. IBEAM No Offset Box
 No Skylights No Clerestory
 No Porches No Origami Dormer
 Joist Size = #2 sp 2x6 Lags 9Mx3" No Sunken Floor
 No Parapet Roof

Version R13.13

Wind Zone 1 Standard Roof (3/8" sheathing only with 15 gax 1.5" at 5'10" oc. (197 plf) Chords: 2x4 SPF #3 Top Plate & 2x4 Rail. Each spliced w/ 12" glue block. 96 inch sidewall
 Diaphragm Construction:

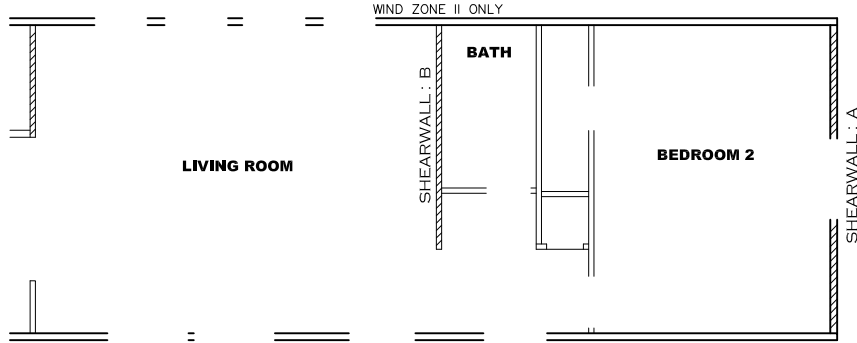
Shearwall	Dist./ Hitch	Length	PLF	# of Joists	Lags	Notes	SW1/SW2
A	0'	129.625"	425	2	4/4	Split Shearwall *	64.75/64.87
D	76'	Full	162	2	2/2		

Wind Zone 2 Standard Roof (3/8" & ceiling with 15 gax 1.5" at 5'10" oc. (267 plf) Chords: 2x4 SPF #3 Top Plate & 2x4 Rail. Each spliced w/ 12" glue block. 96 inch sidewall
 Diaphragm Construction:

Shearwall	Dist./ Hitch	Length	PLF	# of Joists	Lags	Notes	SW1/SW2
A	0'	129.625"	425	2	4/4	Split Shearwall *	64.75/64.87
B	23.04'	136"	425	2	4/1		
C	54.12'	122.5"	425	2	4/4	Split-Island Shearwall	70/52.5
D	76'	128"	162	2	2/1		

Wind Zone 3 Standard Roof (3/8" sheathing only with 15 gax 1.5" at 5'10" oc. (197 plf) Chords: 2x4 SPF #3 Top Plate & 2x4 Rail. Each spliced w/ 12" glue block. 96 inch sidewall
 Diaphragm Construction:

Shearwall	Dist./ Hitch	Length	PLF	# of Joists	Lags	Notes	SW1/SW2
A	0'	129.625"	425	2	4/4	Split Shearwall *	64.75/64.87
B	23.04'	128"	515	3	5/2		
C	54.12'	122.5"	515	3	4/4	Split-Island Shearwall	70/52.5
D	76'	156"	162	2	2/1		



2 BEDROOM OPT.

Model # 29s100-2BR OPT-8ft

Box Width = 184 " Single wide Minimum Joist Spacing 16 "
 Box Length = 76 ft. 95.5" 12" MIN. IBEAM No Offset Box
 No Skylights No Clerestory
 No Porches No Origami Dormer
 Joist Size = #2 sp 2x6 Lags 9Mx3" No Sunken Floor
 No Parapet Roof

Version R13.13

Wind Zone 1 Standard Roof (3/8" sheathing only with 15 gax 1.5" at 5'10" oc. (197 plf) Chords: 2x4 SPF #3 Top Plate & 2x4 Rail. Each spliced w/ 12" glue block. 96 inch sidewall
 Diaphragm Construction:

Shearwall	Dist./ Hitch	Length	PLF	# of Joists	Lags	Notes	SW1/SW2
A	0'	129.625"	425	2	4/4	Split Shearwall *	64.75/64.87
D	76'	Full	162	2	2/2		

Wind Zone 2 Standard Roof (3/8" & ceiling with 15 gax 1.5" at 5'10" oc. (267 plf) Chords: 2x4 SPF #3 Top Plate & 2x4 Rail. Each spliced w/ 12" glue block. 96 inch sidewall
 Diaphragm Construction:

Shearwall	Dist./ Hitch	Length	PLF	# of Joists	Lags	Notes	SW1/SW2
A	0'	129.625"	162	2	2/2	Split Shearwall *	64.75/64.87
B	18.96'	120"	425	3	4/1		
C	54.13'	122.5"	515	3	4/4	Split-Island Shearwall	70/52.5
D	76.01'	128"	162	2	2/1		

NOTE: WIND ZONE III NOT AVAILABLE

APPROVED

HWC
REVISED

APPROVED

MAR 25 2019

Federal Manufactured
Home Construction
And Safety Standards

FP-16-2301

1165 SQ.FT. (STD PLAN "CONDITIONED")
 N/A SQ.FT. (W/OPT. PORCH/RECESS "CONDITIONED")

CMH MANUFACTURING	Model #: ANN16763P	Drawing #:
	Date: 6/25/18	Scale: NTS
Product Designer: E. HARDWICK		16 X 76 ANNIVERSARY
SHEARWALL PAGE		REVISION ECR-668811 8/8/18 EH