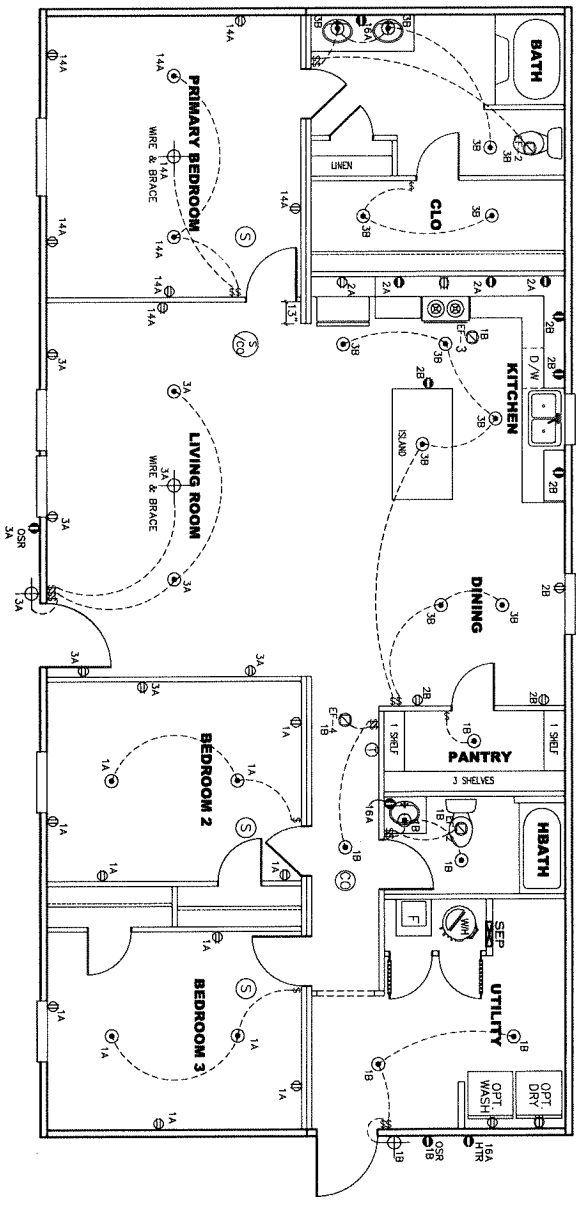


CIRCUIT	CIRCUIT #	WIRE	BREAKER	CIRCUIT	CIRCUIT #	WIRE	BREAKER	CIRCUIT	CIRCUIT #	WIRE	BREAKER
LIGHT/RECP	1A,B,3A,B,14A,B	14-2	15-SP	DIRECT	3A,7B	SEE NOTE #8		BATHROOM	16A	12-2	20-SP
LIGHT/RECP		14-2	15-SP	WATER HEATER	4A,6B	SEE NOTE #8		OPT G/D/SP	9B	SEE NOTE #8	
KITCHEN	2A, 2B	12-2	20-SP	RANGE	5B,7A	SEE NOTE #8		OPT STK/	11A,B	SEE NOTE #8	
WASHER	12A	12-2	20-SP	FURNACE	6A,8A,B,10A,B	SEE NOTE #8		FREZZER	13A	SEE NOTE #8	
RANGE HOOD/		SEE NOTE #8		OPT G/WASH	9A	SEE NOTE #8		REFRIG		SEE NOTE #8	
MICROWAVE/		SEE NOTE #8		MOM/CO DECT	4B	SEE NOTE #8		PRELACE		SEE NOTE #8	
OPT GAS RANG		SEE NOTE #8		REFER		SEE NOTE #8					

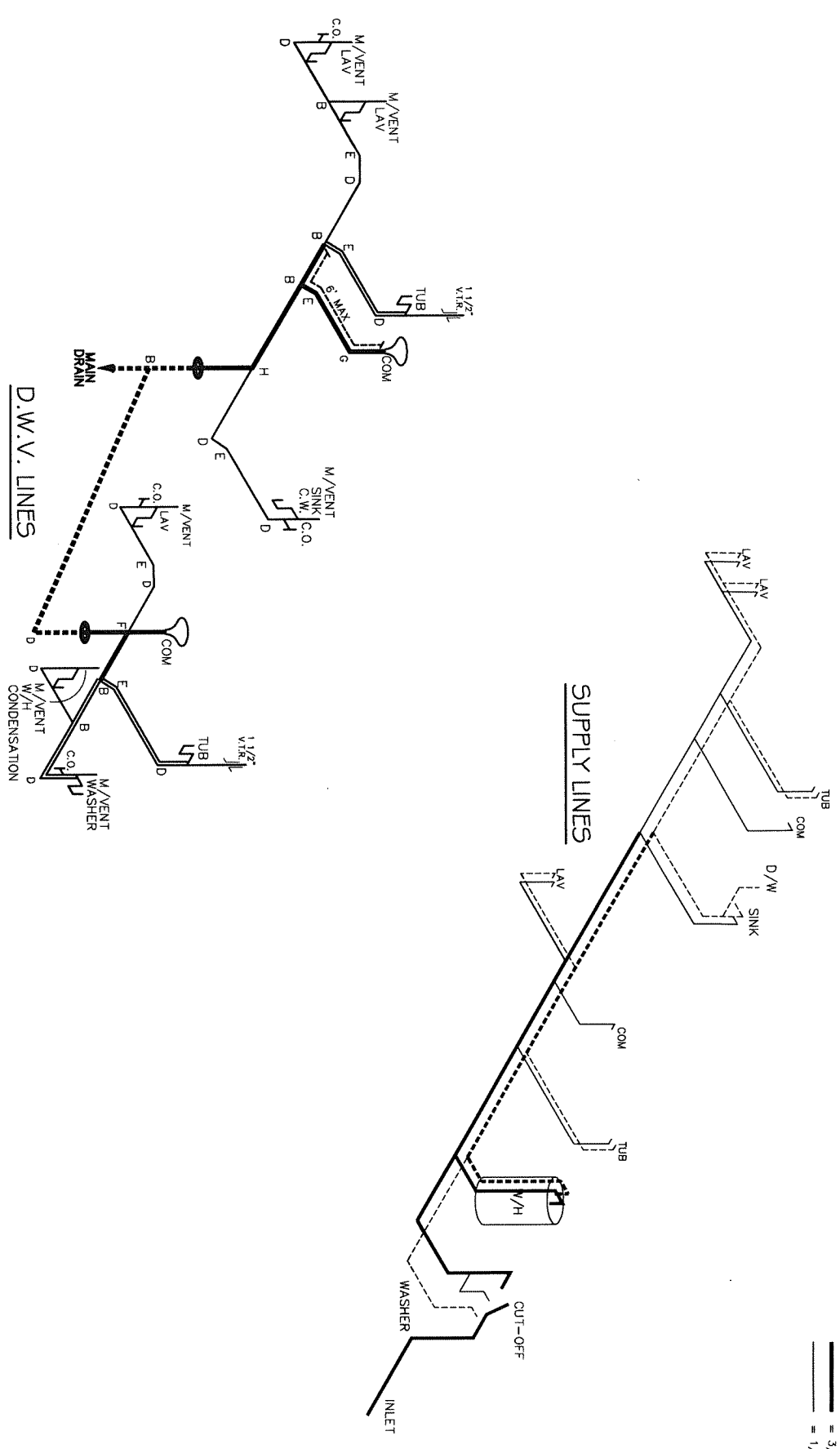


- NOTES:
1. ALL CIRCUITS SHOWN ARE FOR REFERENCE AND MAY BE CHANGED BASED ON OPTIONAL COMPONENTS INSTALLED IN THE HOME.
 2. REFER TO DAPA MANUAL FOR SYMBOL CHART.
 3. EITHER LIGHT OR RECEPTACLE MUST CONNECT TO SWITCH.
 4. EF-1= 50 CFM EXHAUST FAN REQUIRED FOR THERMAL ZONE I & II MAY USE FAN OR WINDOW W/1.5 SQ. FT. OPENABLE GLASS.
 5. EF-2= 50 CFM EXHAUST FAN REQUIRED THERMAL ZONE I, II, AND III.
 6. EF-3= 100 CFM RANGE EXHAUST FAN, SWITCH AT HOOD.
 7. EF-4= WHOLE HOUSE VENTILATION REQUIREMENTS PER DAPA MANUAL.
 8. REFER TO DAPA MANUAL OR THE UFG INSTALLATION MANUAL FOR PROPER WIRE SIZE AND BREAKER SIZE FOR SPECIFIC APPLIANCE AND MODEL BEING INSTALLED.
 9. ALL SMOKE ALARMS TO BE LOCATED ON THE CEILING.
 10. CARBON MONOXIDE ALARMS ARE ONLY REQUIRED WHEN HOME IS OCCUPIED. SMOKE ALARMS ARE NOT REQUIRED FOR BASEMENT READY ROOMS UNLESS VARIANTS FOR ADDITIONAL INFORMATION.
 11. DIMENSIONS SHOWN ON PRINT ARE APPROXIMATE AND TO BE USED ONLY AS A GUIDELINE.

APPROVED
REVISED
 19 JULY 2023
 FP-28-5618
 Federal Manufactured Home Construction And Safety Standards
APPROVED

1474 SQ.FT. (STD PLAN "CONDITIONED")
 N/A SQ.FT. (W/OPT PORCH/RECESS "CONDITIONED")
 MANUFACTURING
CMH
 Model #: LEQ28563A
 Date:2/20/23 Scale: N/A
 Drawing #: 29M205
 Product Designer: E HARDWICK
ELECTRICAL PLAN-06
 REVISION ECR-4202
 7/11/23 EH

NOTE:
 DASHED LINES INDICATE HOT WATER
 SOLID LINES INDICATE COLD WATER



LEGEND

A	SHORT TURN T-Y
B	LONG TURN T-Y
C	LONG BEND 1"-1"
D	LONG SWEEP 1/4 BEND
E	45° EL
F	DBL SANITARY TEE
G	4x3 GLOSET ELL
H	DOUBLE ELL
I	2x2 1/2" ELL
J	45° Y
K	LONG TURN STREET ELBOW
L	45° FTG ELL

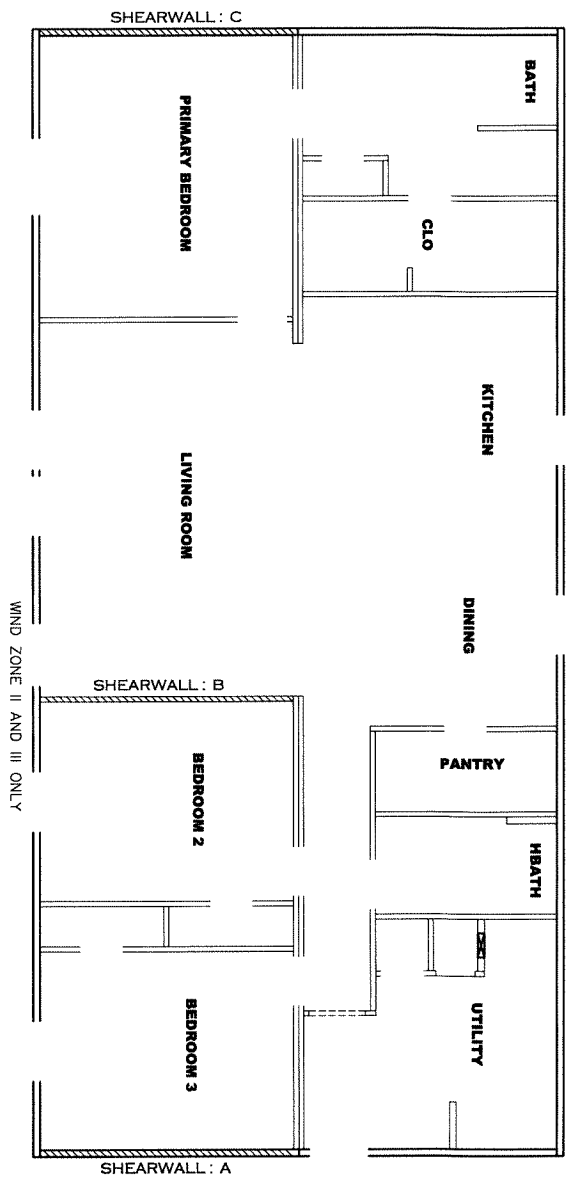
DWV LINE SIZE CHART

—	= 3"
—	= 2"
—	= 1 1/2"

APPROVED **CMH** **APPROVED**
 REVISED
 19 JULY 2023
 FP-28-5618
 Federal Manufactured Home Construction And Safety Standards

1474 SQ.FT. (STD PLAN "CONDITIONED")	
N/A SQ.FT. (W/OPT. PORCH/RECESS "CONDITIONED")	
Product Designer: E.HARDWICK	Model #: LEG28563A
MANUFACTURING	Scale: N/A
Drawing #:	29M205
Date: 2/20/23	Scale: N/A
28 X 56 LEGEND	
D.W.V. and Supply Lines	

REVISION RCR-4202
 7/11/23 ER



Model # 29M205-8FT Minimum Joist Spacing 16 "

Box Width = 158 " Double wide No Offset Box

No Skylights = 56 ft. 95.5" 12" MIN. IBEAM No Clerestory

No Porches No Organi'l Dormer

Joist Size = #2 sp 2x6 Lags 9Mx3" No Sunken Floor

No Parapet Roof

Version R13.4

Wind Zone 1 Standard Roof				(3/8" sheathing only with 15 gax 1.5" at 5'110"				96 inch sidewall					
Diaphragm Construction:				oc. (197 plb) Chords: #3 2x4 plate w/ 2x4 rail									
Shearwall	Dist / Hitch	Length	PLF	# of Joists	Lags	Notes	Shearwall	Dist / Hitch	Length	PLF	# of Joists	Lags	Notes
A	0'	128"	162	2	2/1		A	0'	132"	162	2	2/1	
B	22.71'	124"	425	2	4/1		B	22.71'	124"	425	2	4/1	
C	56'	128"	162	2	2/1		C	56'	Full	425	2	5/5	

Wind Zone 2 Standard Roof				(3/8" sheathing only with 15 gax 1.5" at 5'110"				96 inch sidewall					
Diaphragm Construction:				oc. (197 plb) Chords: #3 2x4 plate w/ 2x4 rail									
Shearwall	Dist / Hitch	Length	PLF	# of Joists	Lags	Notes	Shearwall	Dist / Hitch	Length	PLF	# of Joists	Lags	Notes
A	0'	132"	162	2	2/1		A	0'	Full	425	2	5/5	
B	22.71'	124"	425	2	4/1		B	22.71'	Full	425	2	3/3	0.66
C	56'	Full	425	2	5/5		C	56'	Full	425	2	5/5	

Wind Zone 3 Standard Roof				(3/8" sheathing only with 15 gax 1.5" at 5'110"				96 inch sidewall					
Diaphragm Construction:				oc. (197 plb) Chords: #3 2x4 plate w/ 2x4 rail									
Shearwall	Dist / Hitch	Length	PLF	# of Joists	Lags	Notes	Shearwall	Dist / Hitch	Length	PLF	# of Joists	Lags	Notes
A	0'	Full	425	2	5/5		A	0'	Full	425	2	5/5	
B	22.71'	Full	425	2	3/3		B	22.71'	Full	425	2	3/3	
C	56'	Full	425	2	5/5		C	56'	Full	425	2	5/5	

APPROVED **IRWG** **APPROVED**

06 MAR 2023
 FP-28-5618
 Federal Manufactured Home Construction And Safety Standards

Product Designer: E HARDWICK	1474 SQ.FT. (STD PLAN "CONDITIONED")
MANUFACTURING	SO.FT. (W/OPT. PORCH/RECESS "CONDITIONED")
Model #: LEG28563A	Drawing #:
Date: 2/2023	Scale: NA
28 X 56 LEGEND	29M205