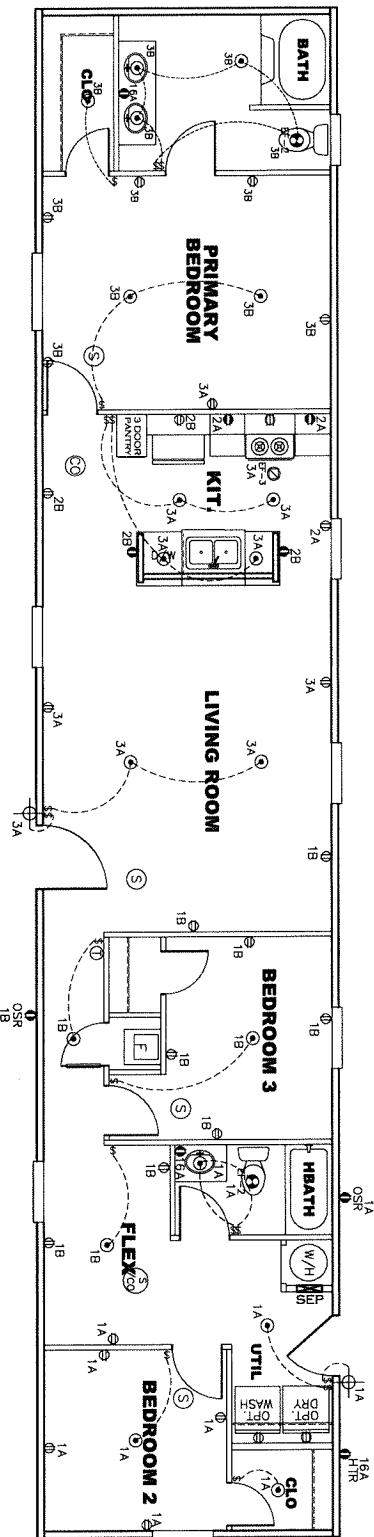


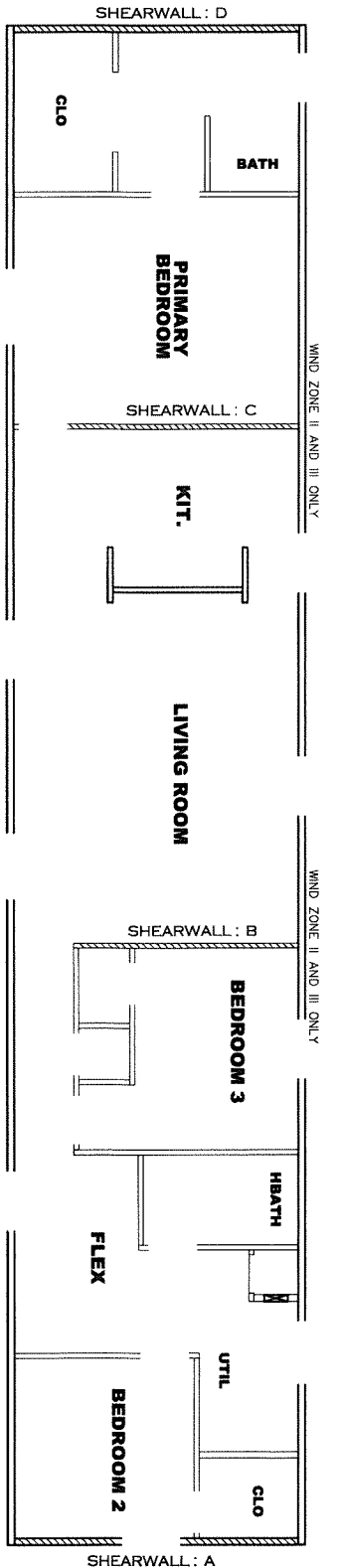
CIRCUIT	CIRCUIT #	WIRE	BREAKER	CIRCUIT	CIRCUIT #	WIRE	BREAKER	CIRCUIT	CIRCUIT #	WIRE	BREAKER
LIGHT/RECP	1A, 1B, 3A, 3B	14-2	15-SP	WATER HEATER	4A, 6B	SEE NOTE #8		BATHROOM	16A	12-2	20-SP
HTGR/DRNGS	2A, 2B	12-2	20-SP	RANGE	5B, 7A	SEE NOTE #8		OPT G/OSP	9B	SEE NOTE #8	
WASHER	12A	12-2	20-SP	OPT GAS RANGE	15B	SEE NOTE #8		OPT SBA7	11A, B	SEE NOTE #8	
DRYER	5A, 7B	SEE NOTE #8		FLURNACE	6A, 8A, 8, 10A, 8	SEE NOTE #8		W/DAC	N/A	SEE NOTE #8	
				OPT D/WASH	9A	SEE NOTE #8		FREEZER	N/A	SEE NOTE #8	
				SMOKE ALARM	4B	SEE NOTE #8					



- NOTES:
1. ALL CIRCUITS SHOWN ARE FOR REFERENCE AND MAY BE CHANGED BASED ON OPTIONAL COMPONENTS INSTALLED IN THE HOME.
 2. REFER TO DAPFA MANUAL FOR SYMBOL CHART.
 3. EITHER LIGHT OR RECEPTACLE MUST CONNECT TO SWITCH.
 4. EF-1= 50 CFM EXHAUST FAN REQUIRED FOR THERMAL ZONE III. THERMAL ZONES I & II MAY USE FAN OR WINDOW W/1.5 SQ. FT. OPENABLE GLASS.
 5. EF-2= 50 CFM EXHAUST FAN REQUIRED THERMAL ZONE I, II, AND III.
 6. EF-3= 100 CFM RANGE EXHAUST FAN, SWITCH AT HOOD.
 7. EF-4= WHOLE HOUSE VENTILATION REQUIREMENTS PER DAPFA MANUAL.
 8. REFER TO DAPFA MANUAL OR THE MFG. INSTALLATION INSTRUCTIONS FOR PROPER WIRE SIZE AND BREAKER SIZE FOR SPECIFIC APPLIANCE AND MODEL BEING INSTALLED.
 9. ALL SMOKE ALARMS TO BE LOCATED ON THE CEILING.
 10. CARBON MONOXIDE ALARMS ARE ONLY REQUIRED WHEN HOME HAS EITHER FUEL BURNING APPLIANCES, IS GARAGE READY OR ADDITIONAL INFORMATION.
 11. DIMENSIONS SHOWN ON PRINT ARE APPROXIMATE AND TO BE USED ONLY AS A GUIDELINE.

APPROVED
REVISED
 27 MAR 2023
 FP-16-3027
 Federal Manufactured Home Construction And Safety Standards

1140 SQ.FT. (STD PLAN "CONDITIONED")
 N/A SQ.FT. (W/OPT. PORCH/RECESS "CONDITIONED")
CMH Model #: LEG16763G Drawing #: 295112
 Date: 5/7/22 Issue: N/A
 Product Designer: E HARDWICK
 MANUFACTURING 16 x 76 LEGEND
ELECTRICAL PLAN-06 **REVISION** RCR-3448
 3/13/23 **EH**



Model # 29s112-8ft
 Box Width = 180" Single wide Minimum Joist Spacing 16"
 Box Length = 76 ft. 95.5" 12" MIN. IBEAM No Clerestory
 No Skylights No Organi. Dormer
 No Porches No Sunken Floor
 Joist Size = #2 sp 2x6 Lags 9Mx3" No Parapet Roof

Version R13.13

Wind Zone 1 Standard Roof		(3/8" sheathing only with 15 gax 1.5" at 5'10"		96 inch sidewall		
Diaphragm Construction:		2x4 Rail. Each spliced w/ 12" glue block.				
Shearwall	Dist. / Hitch	Length	PLF	# of Joists	Lags	Notes
A	0'	135.625"	425	2	4/4	Split Shearwall *
D	76'	Full	162	2	2/2	SW1/SW2 71/64.625
Wind Zone 2 Standard Roof		(3/8" sheathing only with 15 gax 1.5" at 5'10"		96 inch sidewall		
Diaphragm Construction:		2x4 Rail. Each spliced w/ 12" glue block.				
Shearwall	Dist. / Hitch	Length	PLF	# of Joists	Lags	Notes
A	0'	135.625"	425	2	4/4	Split Shearwall *
B	29.96'	136"	425	2	4/1	SW1/SW2 71/64.625
C	55.92'	136"	324	2	3/1	
D	76'	120"	162	2	2/1	
Wind Zone 3 Standard Roof		(3/8" sheathing only with 15 gax 1.5" at 5'10"		96 inch sidewall		
Diaphragm Construction:		oc. (197 pif) Chords: 2x4 SPF #3 Top Plate & 2x4 Rail. Each spliced w/ 12" glue block.				
Shearwall	Dist. / Hitch	Length	PLF	# of Joists	Lags	Notes
A	0'	135.625"	425	2	4/4	Split Shearwall *
B	29.96'	128"	515	3	5/2	71/64.625
C	55.92'	136"	425	2	4/1	
D	76'	140"	162	2	2/1	

APPROVED
TRWG
 26 MAY 2022
 FP-16-3027
 Federal Manufactured Home Construction And Safety Standards

1140 SQ.FT. (STD PLAN "CONDITIONED")
 N/A SQ.FT. (W/OPT. PORCH/RECESS "CONDITIONED")

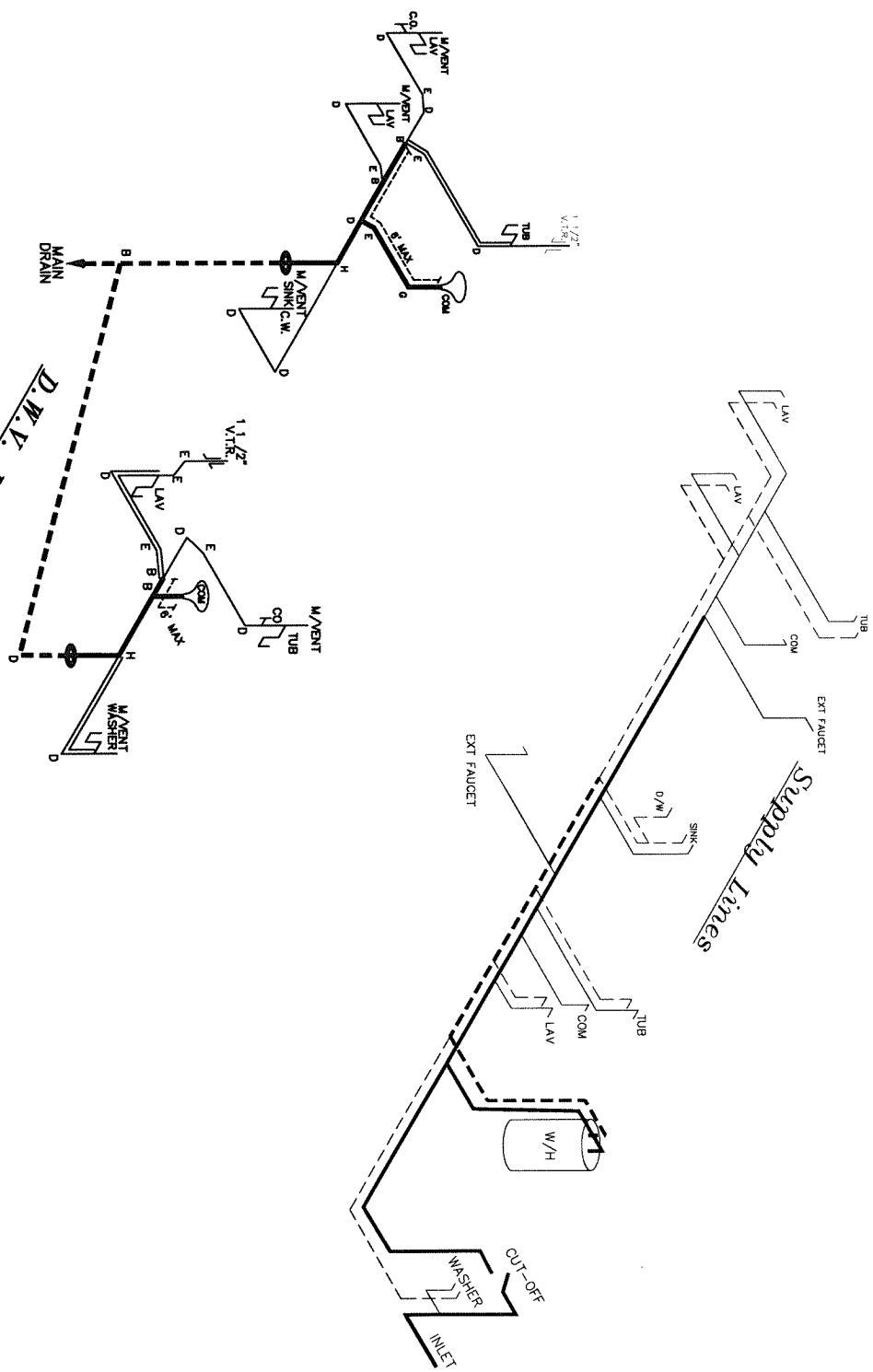
CMH MANUFACTURING
 Model #: DMJ16763C | Drawing #:
 Date: 5/17/22 | Scale: NTS
 Product Designer: E HARDWICK

16' x 76' MIVO

SHEARWALL PAGE

NOTE:
 DASHED LINES INDICATE HOT WATER
 SOLID LINES INDICATE COLD WATER

— = 3/4"
 — = 1/2"



LEGEND	
A	SHORT TURN T-Y
B	LONG TURN T-Y
C	LONG TURN T-Y
D	LONG TURN T-Y BEND
E	45° ELB
F	45° SANITARY JEE
G	45° CLOSET ELL
H	DOUBLE ELL
I	22 1/2° ELL
J	45° V
K	LONG TURN STREET ELBOW

D.W.V. LINE SIZE CHART	
—	= 3"
—	= 2"
—	= 1 1/2"

APPROVED
 REVISED
 20 FEB 2023
 FP-16-3027
 Federal Manufactured
 Home Construction
 And Safety Standards
APPROVED

Product Designer: E HARDWICK	1140 SQ.FT. (STD PLAN, "CONDITIONED")
N/A	SQ.FT. (W/OPT. PORCH/RECESS, "CONDITIONED")
Model #: LEG16763G	Model #: LEG16763G
Manufacturer: CMH	Manufacturer: CMH
Scale: NTS	Scale: NTS
16' x 76' LEGEND	295112