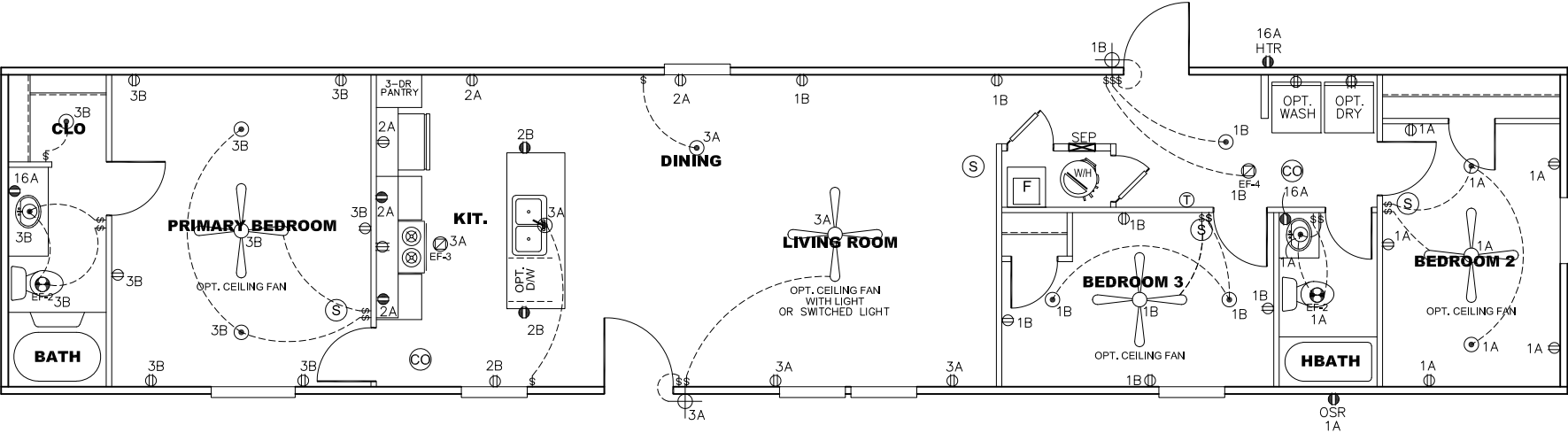


CIRCUIT	CIRCUIT #	WIRE	BREAKER	CIRCUIT	CIRCUIT #	WIRE	BREAKER	CIRCUIT	CIRCUIT #	WIRE	BREAKER
LIGHT/RECEP	1 A, 1 B, 3 A, 3 B	14-2	15-SP	WATER HEATER	4 A, 6 B	SEE NOTE #8		BATHROOM	1 6 A	12-2	20-SP
KITCHEN/DINING	2 A, 2 B	12-2	20-SP	RANGE	5 B, 7 A	SEE NOTE #8		OPT G/D/ISP	9 B	SEE NOTE #8	
WASHER	12 A	12-2	20-SP	OPT GAS RANGE	15 B	SEE NOTE #8		OPT SPA/ WP/JAC	11 A, B	SEE NOTE #8	
DRYER	5 A, 7 B	SEE NOTE #8		FURNACE	6 A, 8 A, B, 10 A, B	SEE NOTE #8		FREEZER	N / A	SEE NOTE #8	
				OPT DWASH	9 A	SEE NOTE #8					
				SMOKE ALARM	4 B	SEE NOTE #8					



NOTES:

- 1. ALL CIRCUITS SHOWN ARE FOR REFERENCE AND MAY BE CHANGED BASED ON OPTIONAL COMPONENTS INSTALLED IN THE HOME.
- 2. REFER TO DAPIA MANUAL FOR SYMBOL CHART.
- 3. EITHER LIGHT OR RECEPTACLE MUST CONNECT TO SWITCH.
- 4. EF-1= 50 CFM EXHAUST FAN REQUIRED FOR THERMAL ZONE III THERMAL ZONES I & II MAY USE FAN OR WINDOW W/1.5 SQ. FT. OPENABLE GLASS.
- 5. EF-2= 50 CFM EXHAUST FAN REQUIRED THERMAL ZONE I, II, AND III.
- 6. EF-3= 100 CFM RANGE EXHAUST FAN, SWITCH AT HOOD.
- 7. EF-4= WHOLE HOUSE VENTILATION REQUIREMENTS PER DAPIA MANUAL.
- 8. REFER TO DAPIA MANUAL OR THE MFG. INSTALLATION INSTRUCTIONS FOR PROPER WIRE SIZE AND BREAKER SIZE FOR SPECIFIC APPLIANCE AND MODEL BEING INSTALLED.
- 9. ALL SMOKE ALARMS TO BE LOCATED ON THE CEILING.
- 10. CARBON MONOXIDE ALARMS ARE ONLY REQUIRED WHEN HOME HAS EITHER FUEL BURNING APPLIANCES, IS GARAGE READY OR IS BASEMENT READY. REFERENCE DAPIA MANUAL FOR ADDITIONAL INFORMATION.
- 11. DIMENSIONS SHOWN ON PRINT ARE APPROXIMATE AND TO BE USED ONLY AS A GUIDELINE.

APPROVED

REVIS

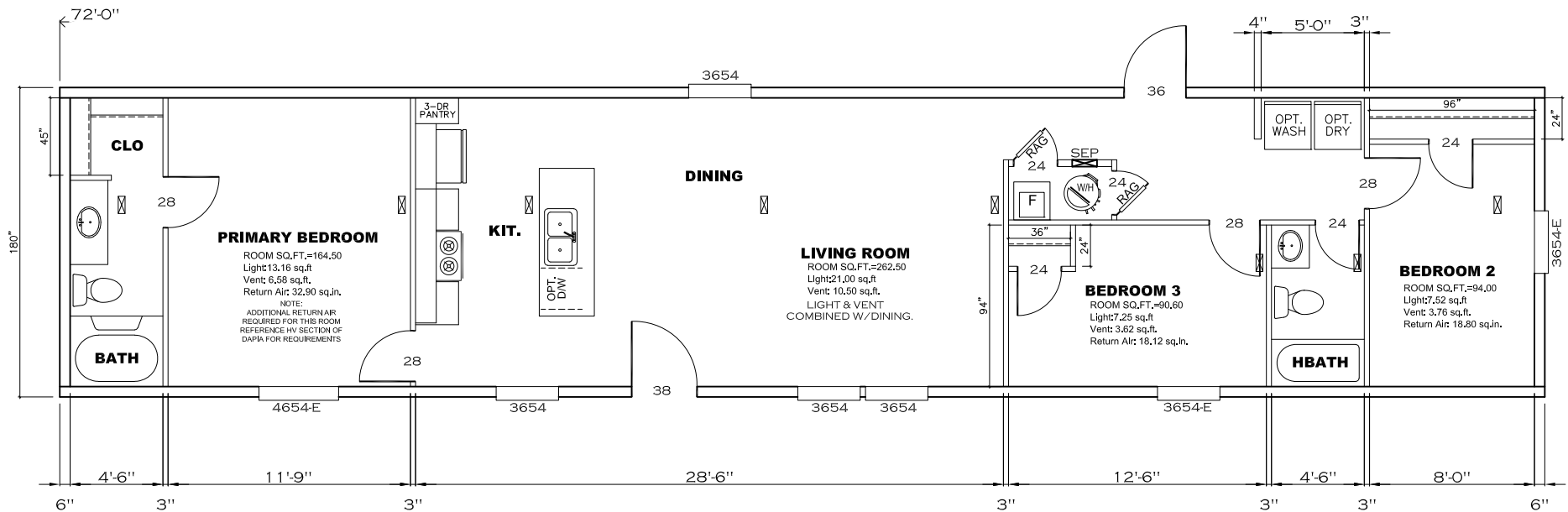
14 JUN 2023

FP-16-3051

Federal Manufactured Home Construction And Safety Standards

APPROVED

1080 SQ.FT. (STD PLAN "CONDITIONED")		N/A SQ.FT. (W/OPT. PORCH/RECESS "CONDITIONED")	
CMH MANUFACTURING		Model #: SSP16723A	Drawing #: 29-115044
Product Designer: E HARDWICK		Date: 10/24/22	Scale: N/A
ELECTRICAL PLAN-06		16' x 72' Coastal Breeze	
3 REVISION		6/12/23 ECR- 3862 EH	



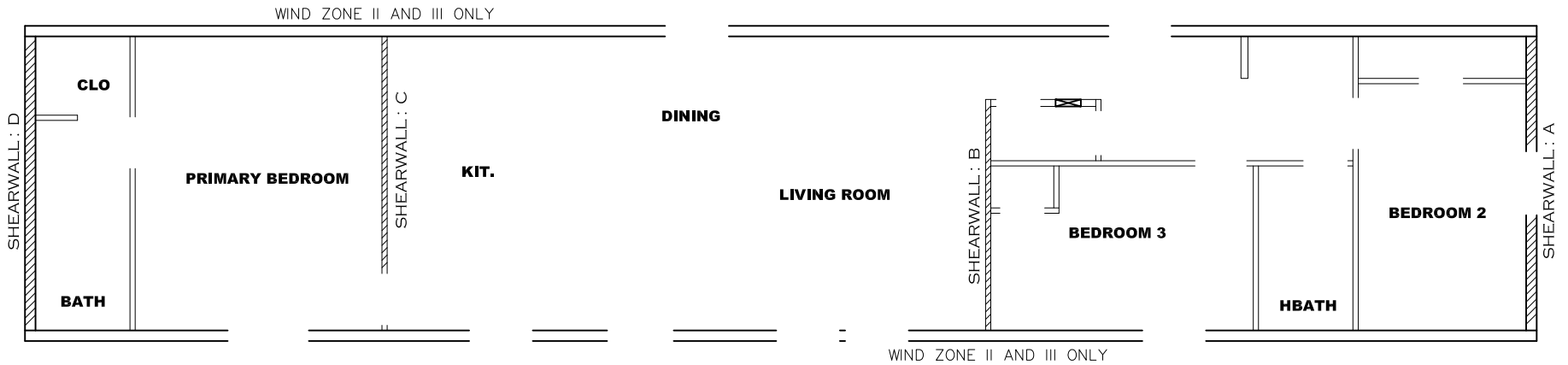
APPROVED **HWC** **APPROVED**

REVISED
10 APR 2023
FP-16-3051

Federal Manufactured
Home Construction
And Safety Standards

1080 SQ.FT. (STD PLAN "CONDITIONED")
N/A SQ.FT. (W/OPT. PORCH/RECESS "CONDITIONED")

CMH MANUFACTURING	Model #: SSP16723A	Drawing #: 29-115044
	Date: 10/24/22 Scale: N/A	
Product Designer: E HARDWICK		16' x 72' Coastal Breeze
FLOOR PLAN		2 REVISION ECR- 3484 3/28/23 EH



Model # 29-11s044-8ft Minimum Joist Spacing 16 "

Box Width = 180 " Single wide No Offset Box

Box Length = 72 ft. 95.5" MIN. IBEAM No Clerestory

No Skylights No Origami Dormer

No Porches No Sunken Floor

Joist Size = #2 sp 2x6 Lags 9Mx3" No Parapet Roof

Version R13.13

Wind Zone 1 Standard Roof			(3/8" sheathing only with 15 gax 1.5" at 5"/10" oc. (197 plf) Chords: 2x4 SPF #3 Top Plate & 2x4 Rail. Each spliced w/ 12" glue block.				96 inch sidewall	
Diaphragm Construction:								
Shearwall	Dist./ Hitch	Length	PLF	# of Joists	Lags	Notes	SW1/SW2	
A	0 '	131.625 "	425	2	4/4	Split Shearwall *	65.75/65.87.	
D	72 '	160 "	162	2	2/1			
Wind Zone 2 Standard Roof			(3/8" sheathing only with 15 gax 1.5" at 5"/10" oc. (197 plf) Chords: 2x4 SPF #3 Top Plate & 2x4 Rail. Each spliced w/ 12" glue block.				96 inch sidewall	
Diaphragm Construction:								
Shearwall	Dist./ Hitch	Length	PLF	# of Joists	Lags	Notes	SW1/SW2 % over	
A	0 '	131.625 "	425	2	4/4	Split Shearwall *	65.75/65.87.	
B	26.13 '	124 "	425	3	4/1			
C	54.88 '	135.5 "	324	2	3/1		0.37	
D	72 '	100 "	162	2	1/1			
Wind Zone 3 Standard Roof			(3/8" sheathing only with 15 gax 1.5" at 5"/10" oc. (197 plf) Chords: 2x4 SPF #3 Top Plate & 2x4 Rail. Each spliced w/ 12" glue block.				96 inch sidewall	
Diaphragm Construction:								
Shearwall	Dist./ Hitch	Length	PLF	# of Joists	Lags	Notes		
A	0 '	131.625 "	425	2	4/4	Split Shearwall *	65.75/65.87.	
B	26.13 '	128 "	515	3	5/2			
C	54.88 '	124 "	425	3	4/1			
D	72 '	120 "	162	2	2/1			

APPROVED **HWG** **APPROVED**

REVISED
10 APR 2023
FP-16-3051

Federal Manufactured
Home Construction
And Safety Standards

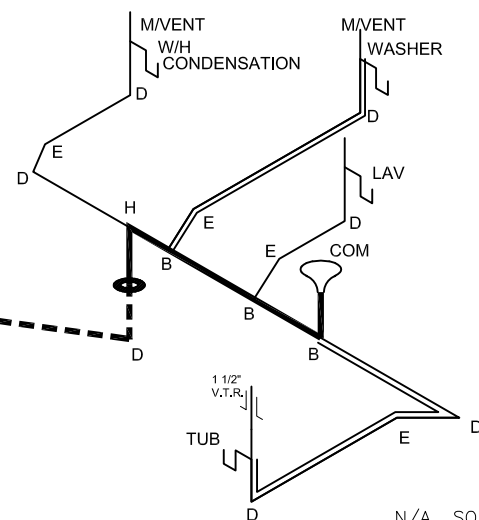
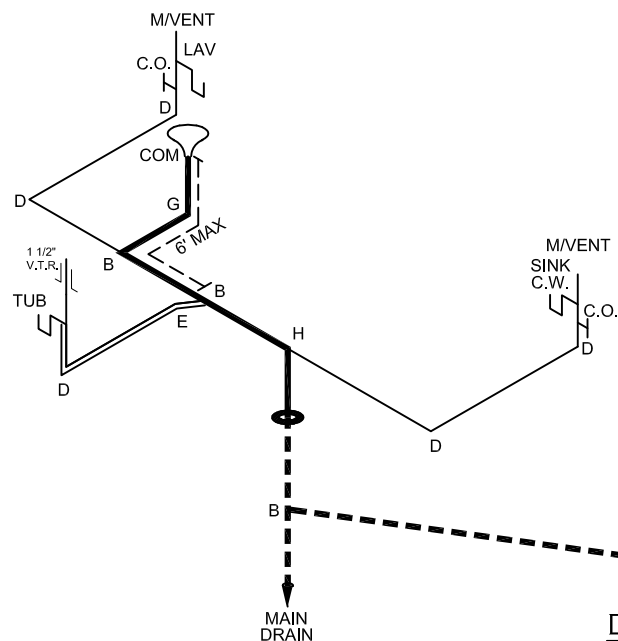
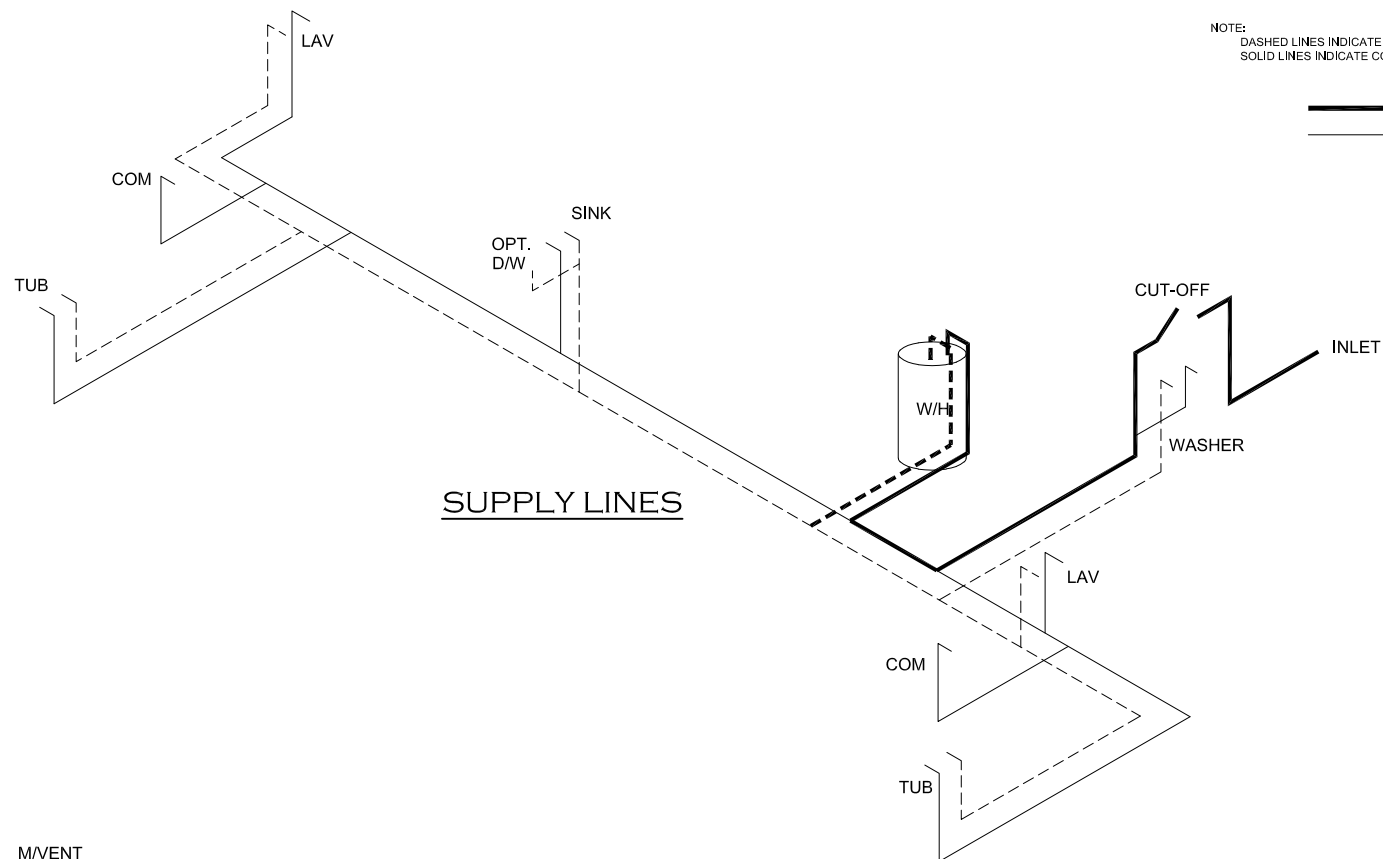
1080 SQ.FT. (STD PLAN "CONDITIONED")
N/A SQ.FT. (W/OPT. PORCH/RECESS "CONDITIONED")

CMH MANUFACTURING		Model #: SSP16723A	Drawing #: 29-11S044
Date: 10/24/22		Scale: N/A	
Product Designer: E HARDWICK		16' x 72' Coastal Breeze	

SHEARWALL PAGE

NOTE:
DASHED LINES INDICATE HOT WATER
SOLID LINES INDICATE COLD WATER

— = 3/4"
— = 1/2"



APPROVED **HWC** **APPROVED**
REVISED
10 APR 2023
FP-16-3051
Federal Manufactured
Home Construction
And Safety Standards

1080 SQ.FT. (STD PLAN "CONDITIONED")
N/A SQ.FT. (W/OPT. PORCH/RECESS "CONDITIONED")

CMH MANUFACTURING	Model #: SSP16723A	Drawing #: 29-115044
	Date: 10/24/22 Scale: N/A	
Product Designer: E HARDWICK		16' x 72' Coastal Breeze
D.W.V. and Supply Lines		2 REVISION ECR-3484 3/28/23 BB

DWV LINE SIZE CHART

— = 3"
— = 2"
— = 1 1/2"

LEGEND	
A	SHORT TURN T-Y
B	LONG TURN T-Y
C	1/4 BEND
D	LONG SWEEP 1/4 BEND
E	45 ELL
F	DBL. SANITARY TEE
G	4x3 CLOSET ELL
H	DOUBLE ELL
I	22 1/2° ELL
J	45° Y
K	LONG TURN STREET ELBOW