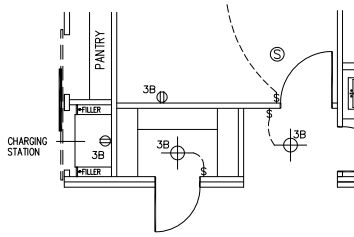


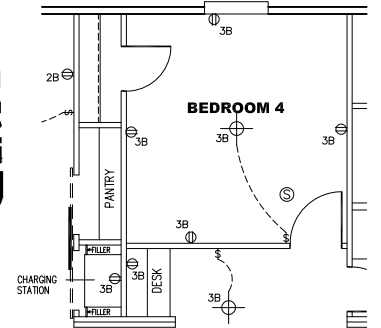
NOTES:

- ALL CIRCUITS SHOWN ARE FOR REFERENCE AND MAY BE CHANGED BASED ON OPTIONAL COMPONENTS INSTALLED IN THE HOME.
- REFER TO EL SECTION OF THE DAPIA FOR SYMBOL CHART.
- EITHER LIGHT OR RECEPTACLE MUST CONNECT TO SWITCH.
- EF-1= 50 CFM EXHAUST FAN REQUIRED FOR THERMAL ZONE III THERMAL ZONES I & II MAY USE FAN OR WINDOW W/1.5 SQ. FT. OPENABLE GLASS.
- EF-2= 50 CFM EXHAUST FAN REQUIRED THERMAL ZONE I, II, AND III.
- EF-3= 100 CFM RANGE EXHAUST FAN, SWITCH AT HOOD.
- EF-4= WHOLE HOUSE VENTILATION PER REQUIREMENTS IN S-HV-10 & 10A OR M-HV-11 & 11A OF DAPIA.
- REFER TO EL SECTION OF THE DAPIA OR THE MFG. INSTALLATION INSTRUCTIONS FOR PROPER WIRE SIZE AND BREAKER SIZE FOR SPECIFIC APPLIANCE AND MODEL BEING INSTALLED.
- ALL SMOKE ALARMS TO BE LOCATED ON THE CEILING.
- DIMENSIONS SHOWN ON PRINT ARE APPROXIMATE AND TO BE USED ONLY AS A GUIDELINE.

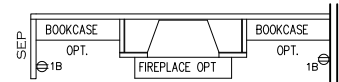
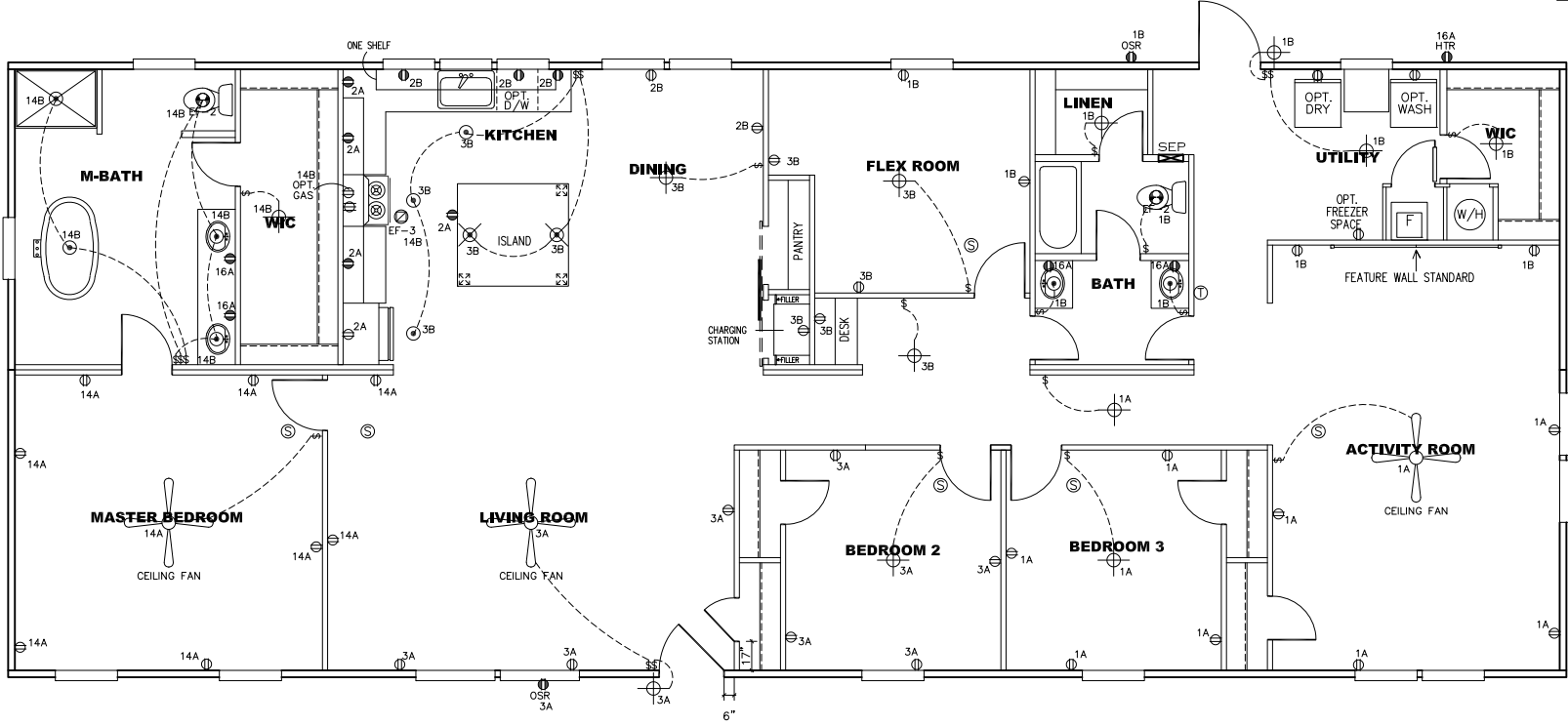


STORAGE OPTION

**APPROVED** **I W C** **APPROVED**  
**REVISED**  
 MAR 05 2020  
 FP-32-2720  
 Federal Manufactured  
 Home Construction  
 And Safety Standards



4TH BEDROOM OPT.



FIREPLACE & BOOKCASE OPT.

CIRCUIT	CIRCUIT #	WIRE	BREAKER	CIRCUIT	CIRCUIT #	WIRE	BREAKER	CIRCUIT	CIRCUIT #	WIRE	BREAKER
LIGHT/RECEP	1A,B,3A,B,14A,B	14-2	15-SP	WATER HEATER	4A,6B	SEE NOTE #8		BATHROOM	16A	12-2	20-SP
KITCHEN	2A,2B	12-2	20-SP	RANGE	5B,7A	SEE NOTE #8		OPT G/DISP	9B	SEE NOTE #8	
WASHER	12A	12-2	20-SP	FURNACE	6A,8A,B,10A,B	SEE NOTE #8		OPT SPA/WP/JAC	11A,B	SEE NOTE #8	
DRYER	5A,7B	SEE NOTE #8		OPT D/WASH	9A	SEE NOTE #8		FREEZER	13A	SEE NOTE #8	
				SMOKE DECT.	4B	SEE NOTE #8					

2280 SQ.FT. (STD PLAN "CONDITIONED")  
 N/A SQ.FT. (W/OPT. PORCH/RECESS "CONDITIONED")

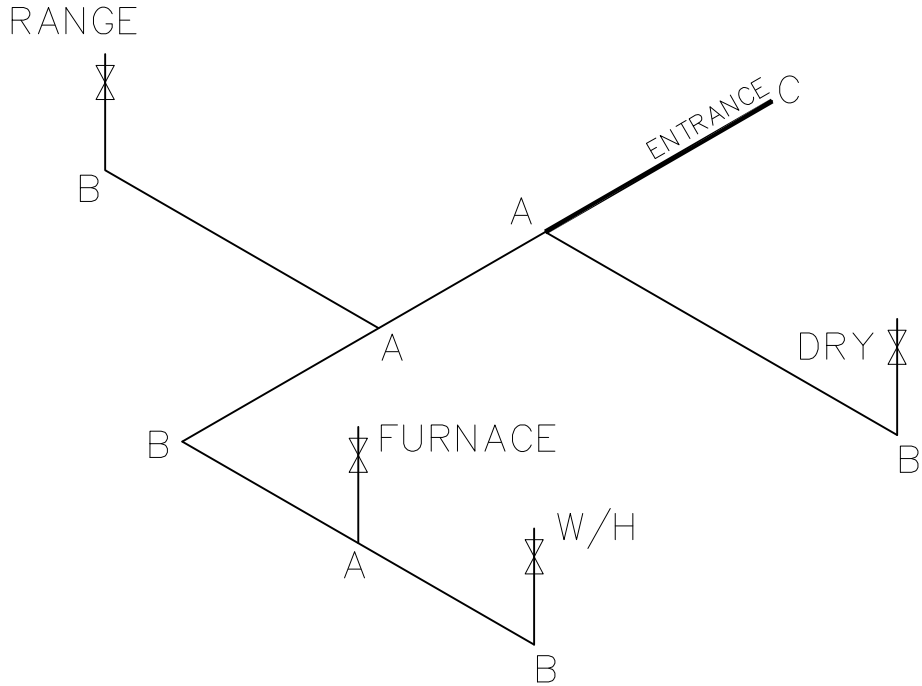
<b>CMH</b> MANUFACTURING	Model #: ELT32763A	Drawing #:
	Date: 5/21/19	Scale: N/A
Product Designer: E HARDWICK	32 X 76 ELITE	
<b>ELECTRICAL PLAN-06</b>		



LEGEND		APPLIANCE BTU'S RATINGS MAX. INPUT	
SYM	FITTINGS		
A	TEE	FURNACE	65,000 BTU'S
B	90 ELL	W/H	37,000 BTU'S
X	VALVE	RANGE	52,000 BTU'S
C	CAP	DRYER	22,000 BTU'S

MDL=40'

**APPROVED** **HWC** **APPROVED**  
MAY 30 2019  
FP-32-2720  
Federal Manufactured Home Construction And Safety Standards



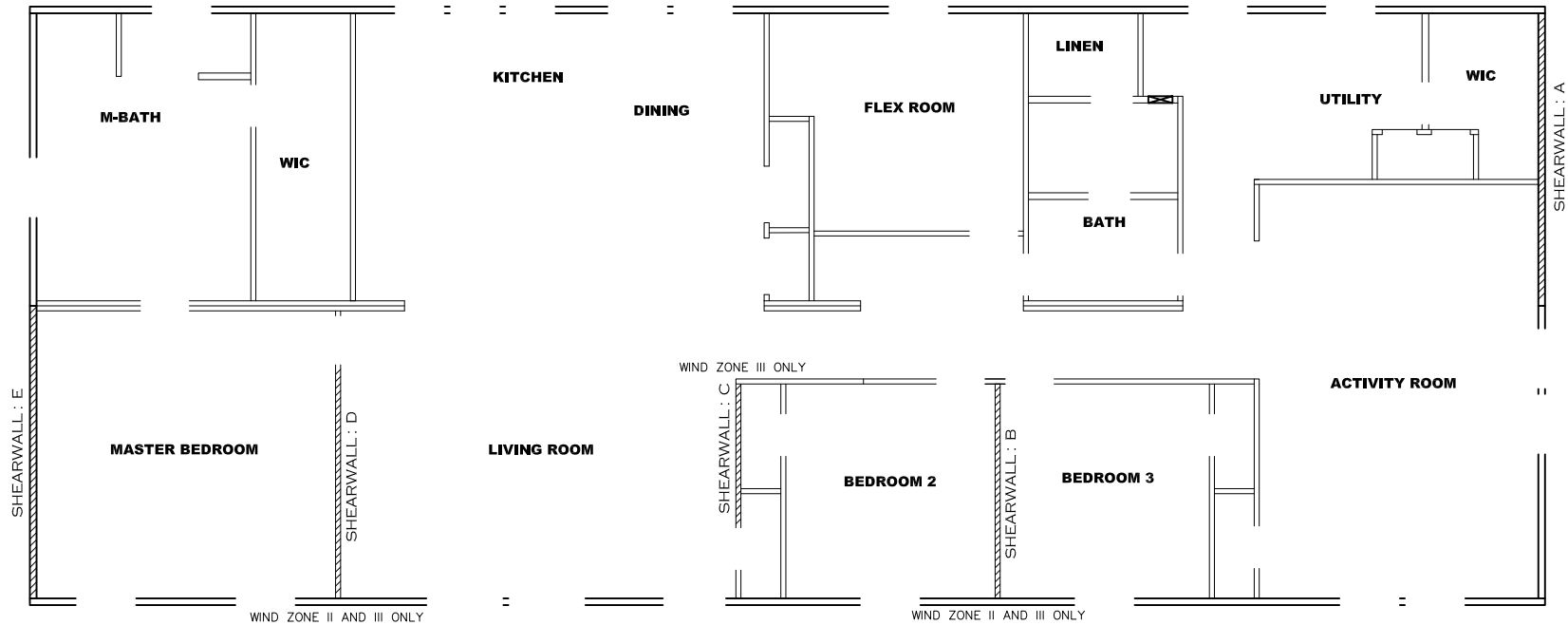
NOTES:

- 1) ALL PIPE IS 3/4" I.D.CAST (EXCEPT WHERE NOTED OTHERWISE)
- 2) MDL=MAX. DETERMINED LENGTH OF PIPE
- 3) FITTING MAY BE ADDED OR SUBTRACTED TO TRAVERSE VARIATIONS IN AXLE QUANTITY, PLACEMENT, AND FRAME TYPE.
- 4) INLET LOCATION MAY VARY TO STAY WITHIN MAX. DETERMINED LENGTH

GAS LINE SIZE CHART	
	= 1"
	= 3/4"

2280 SQ.FT. (STD PLAN "CONDITIONED")  
N/A SQ.FT. (W/OPT. PORCH/RECESS "CONDITIONED")

<b>CMH</b> MANUFACTURING	Model #: ELT32763A	Drawing #:
	Date:5/21/19	Scale: N/A
Product Designer: E HARDWICK		32 X 76 ELITE
<b>GAS LINE DETAIL</b>		



**Model # 29M163-8FT**

Minimum Joist Spacing 16"

- Box Width = 180" Double wide No Offset Box
- Box Length = 76 ft. 95.5" 12" MIN. IBEAM No Clerestory
- No Skylights No Origami Dormer
- No Porches No Sunken Floor
- Joist Size = #2 sp 2x6 Lags 9Mx3" No Parapet Roof

**Version R13.4**

**Wind Zone 1 Standard Roof** (3/8" sheathing only with 15 gax 1.5" at 5"/10" oc. (197 plf) Chords: #3 2x4 plate w/ 2x4 rail spliced w/ 12" glue block. 96 inch sidewall  
**Diaphragm Construction:**

Shearwall	Dist./ Hitch	Length	PLF	# of Joists	Lags	Notes
A	0'	Full	162	2	2/2	
E	76'	Full	162	2	2/2	

**Wind Zone 2 Standard Roof** (3/8" sheathing only with 15 gax 1.5" at 5"/10" oc. (197 plf) Chords: #3 2x4 plate w/ 2x4 rail spliced w/ 12" glue block. 96 inch sidewall  
**Diaphragm Construction:**

Shearwall	Dist./ Hitch	Length	PLF	# of Joists	Lags	Notes
A	0'	160"	162	2	2/1	
B	27.46'	128"	515	3	5/2	
D	60.54'	136"	425	2	4/1	
E	76'	92"	162	2	1/1	

**Wind Zone 3 Standard Roof** (3/8" sheathing only with 15 gax 1.5" at 5"/10" oc. (197 plf) Chords: #3 2x4 plate w/ 2x4 rail spliced w/ 12" glue block. 96 inch sidewall  
**Diaphragm Construction:**

Shearwall	Dist./ Hitch	Length	PLF	# of Joists	Lags	Notes
A	0'	Full	425	2	5/5	
B	27.46'	120"	425	3	4/1	
C	40.46'	85.5"	515	3	3/3	Island Shearwall
D	60.54'	128"	324	2	3/1	
E	76.17'	112"	162	2	2/1	

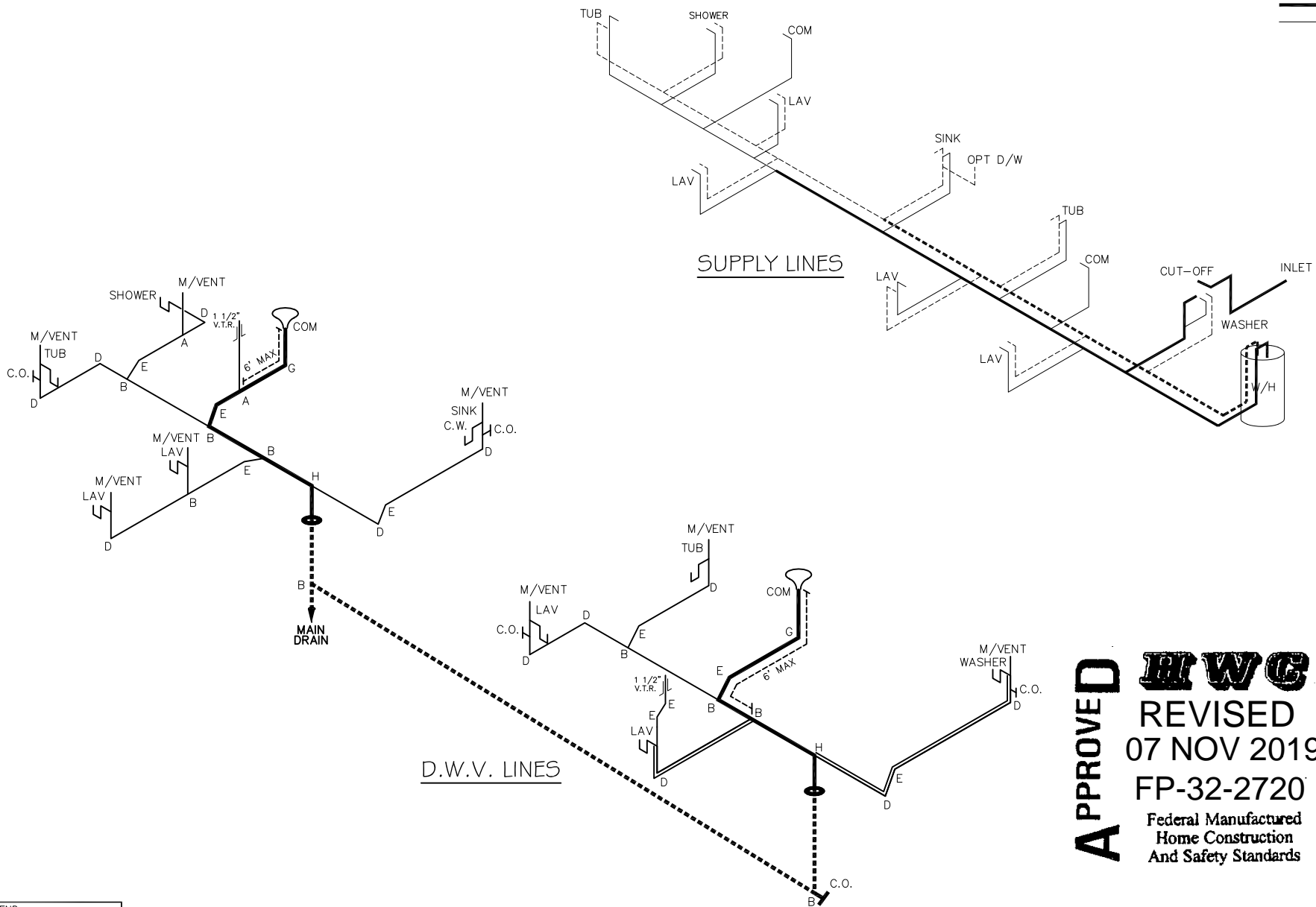
**APPROVED** **HWC** **REVISED** **APPROVED**  
 JUNE 20 2019  
 FP-32-2720  
 Federal Manufactured Home Construction And Safety Standards

2280 SQ.FT. (STD PLAN "CONDITIONED")  
 N/A SQ.FT. (W/OPT. PORCH/RECESS "CONDITIONED")

<b>CMH</b> MANUFACTURING	Model #: ELT32763A	Drawing #:
	Date: 5/21/19	29M163
Product Designer: E HARDWICK		32 X 76 ELITE
<b>8' SHEARWALL</b>		

NOTE: DASHED LINES INDICATE HOT WATER  
SOLID LINES INDICATE COLD WATER

— = 3/4"  
— = 1/2"



LEGEND	
A	SHORT TURN T-Y
B	LONG TURN T-Y
C	1/4 BEND
D	LONG SWEEP 1/4 BEND
E	45° ELL
F	DBL. SANITARY TEE
G	4x3 CLOSET ELL
H	DOUBLE ELL
I	22 1/2° ELL
J	45° Y
K	LONG TURN STREET ELBOW
L	45° FTG ELL

DWV LINE SIZE CHART	
—	= 3"
—	= 2"
—	= 1 1/2"

**APPROVED** **HWG** **APPROVED**  
 REVISED  
 07 NOV 2019  
 FP-32-2720  
 Federal Manufactured  
 Home Construction  
 And Safety Standards

2280 SQ.FT. (STD PLAN "CONDITIONED")  
 N/A SQ.FT. (W/OPT. PORCH/RECESS "CONDITIONED")

<b>CMH</b> MANUFACTURING Product Designer: E HARDWICK	Model #: ELT327G3A Date: 5/21/19 Scale: N/A	Drawing #: 29M163
	<b>D.W.V. and Supply Lines</b>	