

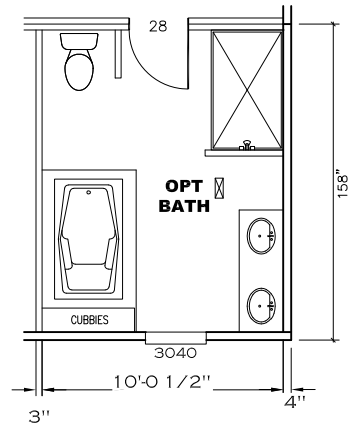
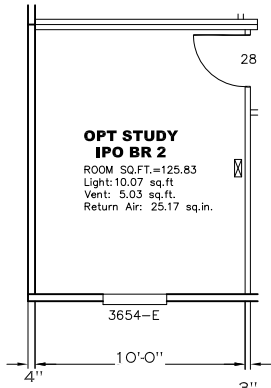
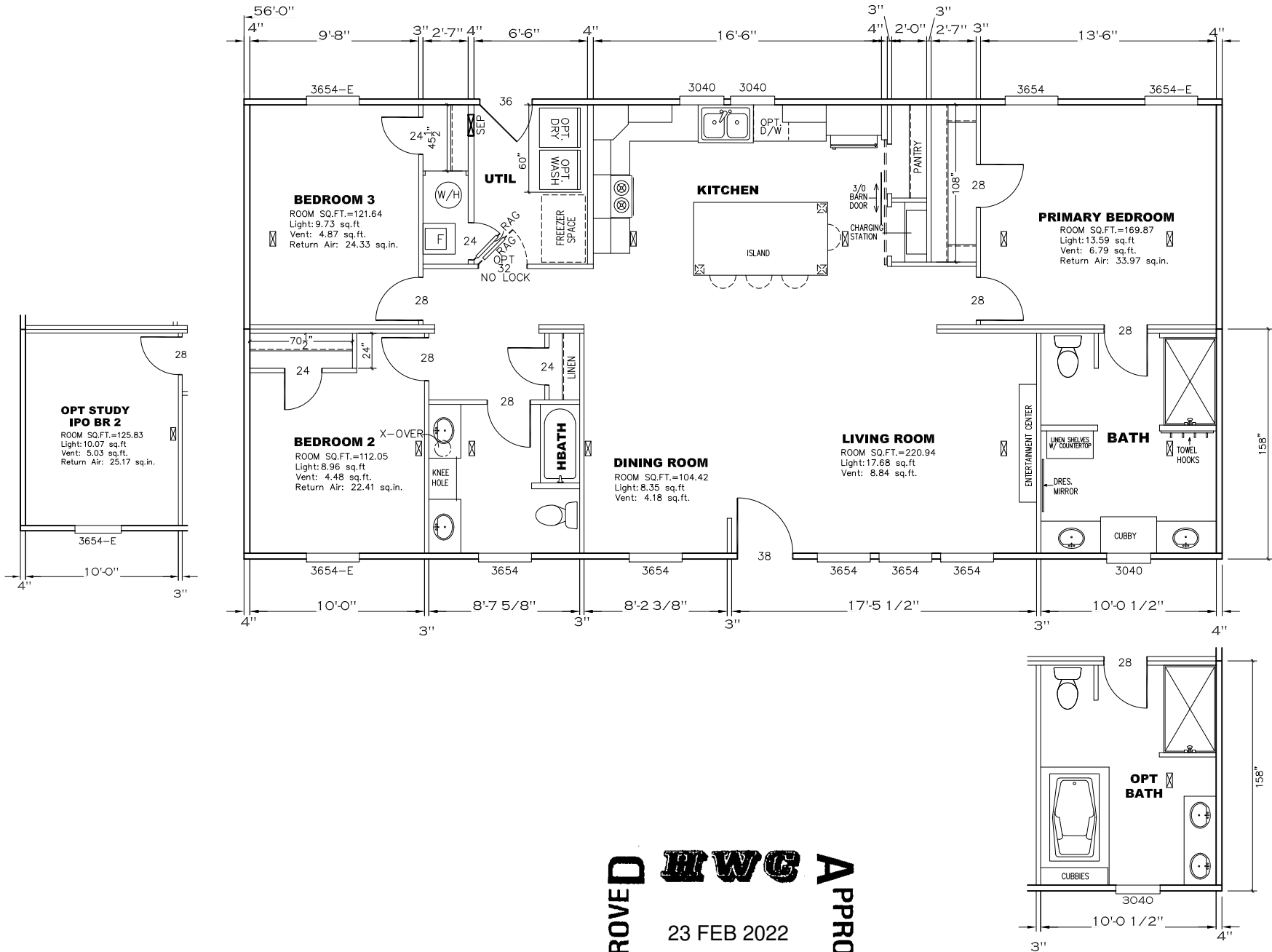
- NOTES:
1. ALL CIRCUITS SHOWN ARE FOR REFERENCE AND MAY BE CHANGED BASED ON OPTIONAL COMPONENTS INSTALLED IN THE HOME.
 2. REFER TO DAPIA MANUAL FOR SYMBOL CHART.
 3. EITHER LIGHT OR RECEPTACLE MUST CONNECT TO SWITCH.
 4. EF-1= 50 CFM EXHAUST FAN REQUIRED FOR THERMAL ZONE III THERMAL ZONES I & II MAY USE FAN OR WINDOW W/1.5 SQ. FT. OPENABLE GLASS.
 5. EF-2= 50 CFM EXHAUST FAN REQUIRED THERMAL ZONE I, II, AND III.
 6. EF-3= 100 CFM RANGE EXHAUST FAN, SWITCH AT HOOD.
 7. EF-4= WHOLE HOUSE VENTILATION REQUIREMENTS PER DAPIA MANUAL.
 8. REFER TO DAPIA MANUAL OR THE MFG. INSTALLATION INSTRUCTIONS FOR PROPER WIRE SIZE AND BREAKER SIZE FOR SPECIFIC APPLIANCE AND MODEL BEING INSTALLED.
 9. ALL SMOKE ALARMS TO BE LOCATED ON THE CEILING.
 10. CARBON MONOXIDE ALARMS ARE ONLY REQUIRED WHEN HOME HAS EITHER FUEL BURNING APPLIANCES, IS GARAGE READY OR IS BASEMENT READY. REFERENCE DAPIA MANUAL FOR ADDITIONAL INFORMATION.
 11. DIMENSIONS SHOWN ON PRINT ARE APPROXIMATE AND TO BE USED ONLY AS A GUIDELINE.

CIRCUIT	CIRCUIT #	WIRE	BREAKER	CIRCUIT	CIRCUIT #	WIRE	BREAKER	CIRCUIT	CIRCUIT #	WIRE	BREAKER
LIGHT/RECEP	1A,3A,3B,13B,14B	14-2	15-SP	WATER HEATER	4A,6B	SEE NOTE #8		BATHROOM	16 A	12-2	20-SP
KITCHEN	2A,2B,14A	12-2	20-SP	RANGE	5B,7A	SEE NOTE #8		OPT G/DISP	9B	SEE NOTE #8	
WASHER	12A	12-2	20-SP	FURNACE	6A,8A,B,10A,B	SEE NOTE #8		OPT SPA/WP/JAC	11A,B	SEE NOTE #8	
DRYER	5A,7B	SEE NOTE #8		OPT D/WASH	9A	SEE NOTE #8		FREEZER	13A	SEE NOTE #8	
				SMOKE ALARM	4B	SEE NOTE #8					

APPROVED **HWC** **APPROVED**
 23 FEB 2022
 FP-28-5513
 Federal Manufactured
 Home Construction
 And Safety Standards

1,475 SQ.FT. (STD PLAN "CONDITIONED")
 N/A SQ.FT. (W/OPT. PORCH/RECESS "CONDITIONED")

CMH MANUFACTURING	Model #: UBX28563I	Drawing #: 29M190
Product Designer: E HARDWICK	Date: 2/21/22 Scale: NTS	
28' x 56' Ultra Excel		
ELECTRICAL PLAN-06		

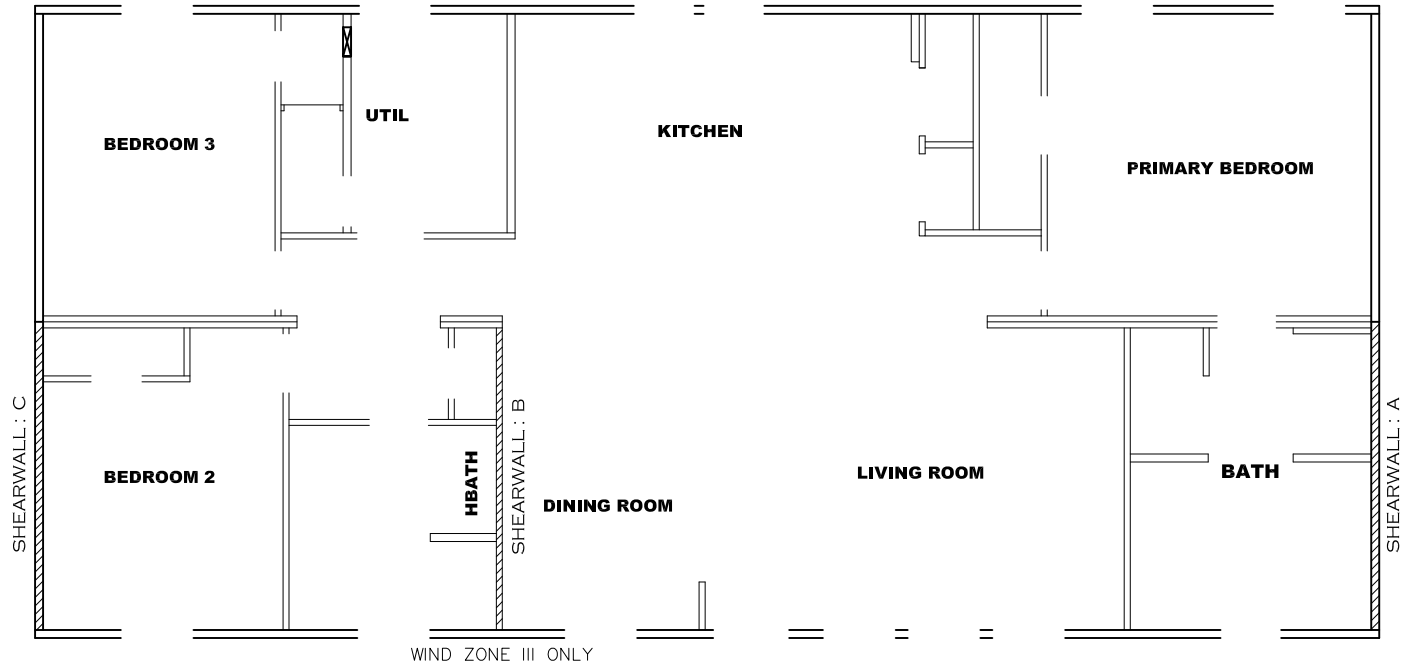


APPROVED **HWC** **APPROVED**
 23 FEB 2022
 FP-28-5513
 Federal Manufactured
 Home Construction
 And Safety Standards

1,475 SQ.FT. (STD PLAN "CONDITIONED")
 N/A SQ.FT. (W/OPT. PORCH/RECESS "CONDITIONED")

CMH MANUFACTURING	Model #: UBX28563I	Drawing #:
Product Designer: E HARDWICK	Date: 2/21/22	Scale: NTS
28' x 56' Ultra Excel		29M190
FLOOR PLAN		

NOTE: ALL BEDROOMS ARE WITHIN 35' FROM AN EXIT DOOR



Model # 29M190-8ft

Box Width = 158 " Double wide Minimum Joist Spacing 16 "
 Box Length = 56 ft. 95.5" 12" MIN. IBEAM No Offset Box
 No Skylights No Origami Dormer No Clerestory
 No Porches No Sunken Floor
 Joist Size = #2 sp 2x6 Lags 9Mx3" No Parapet Roof

Version R13.14

Wind Zone 1 Standard Roof (3/8" sheathing only with 15 gax 1.5" at 5"/10" oc. 96 inch sidewall
 Diaphragm Construction: (197 p/f) Chords: 2x4 SPF #3 Top Plate & 2x4 Rail. Each spliced w / 12" glue block.

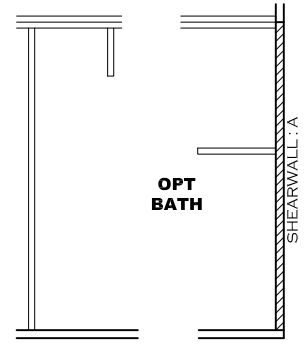
Shearwall	Dist./ Hitch	Length	PLF	# of Joists	Lags	Notes
A	0'	128"	162	2	2/1	
C	56'	128"	162	2	2/1	

Wind Zone 2 Standard Roof (3/8" sheathing only with 15 gax 1.5" at 5"/10" oc. 96 inch sidewall
 Diaphragm Construction: (197 p/f) Chords: 2x4 SPF #3 Top Plate & 2x4 Rail. Each spliced w / 12" glue block.

Shearwall	Dist./ Hitch	Length	PLF	# of Joists	Lags	Notes
A	0'	Full	425	2	3/3	
C	56'	Full	425	2	3/3	

Wind Zone 3 Standard Roof (3/8" sheathing only with 15 gax 1.5" at 5"/10" oc. 96 inch sidewall
 Diaphragm Construction: (197 p/f) Chords: 2x4 SPF #3 Top Plate & 2x4 Rail. Each spliced w / 12" glue block.

Shearwall	Dist./ Hitch	Length	PLF	# of Joists	Lags	Notes
A	0'	Full	425	2	3/3	
B	36.66'	Full	425	2	2/2	0.66
C	56'	136"	162	2	2/1	



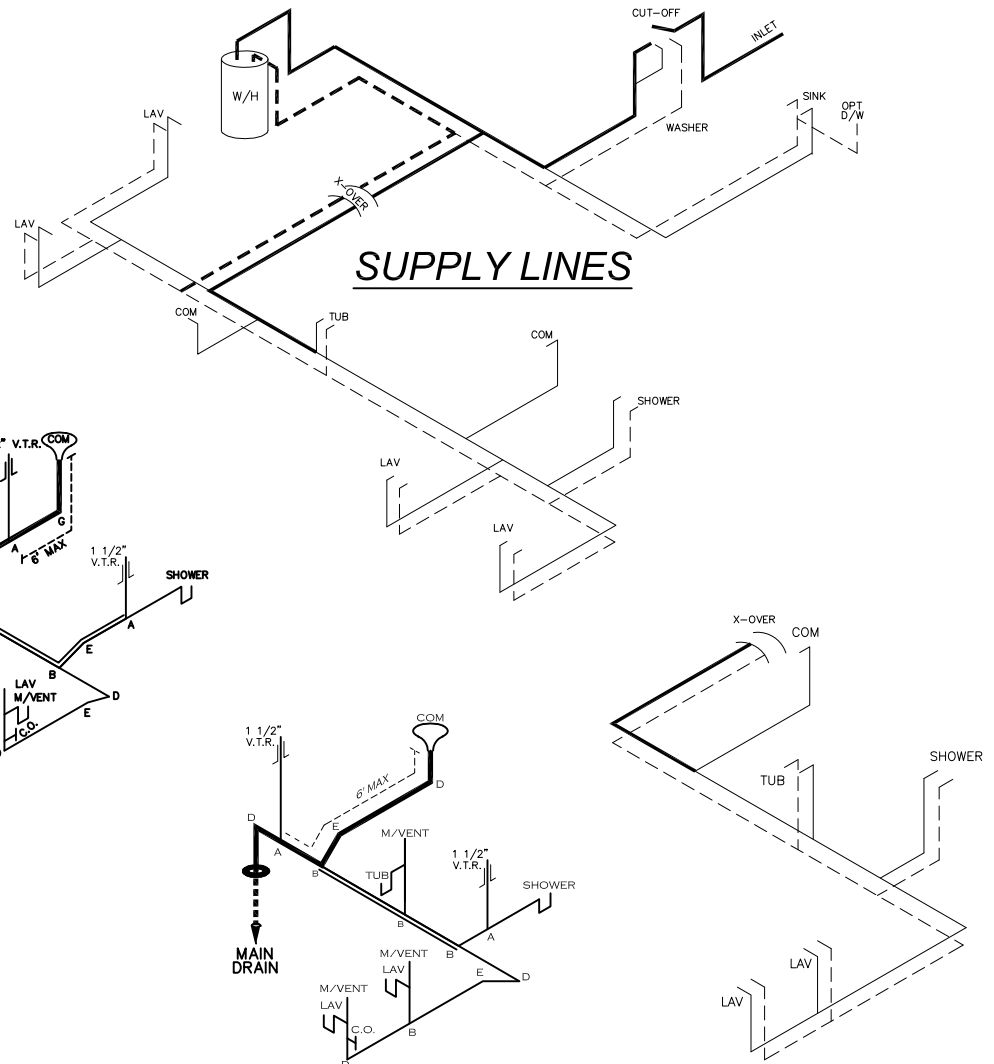
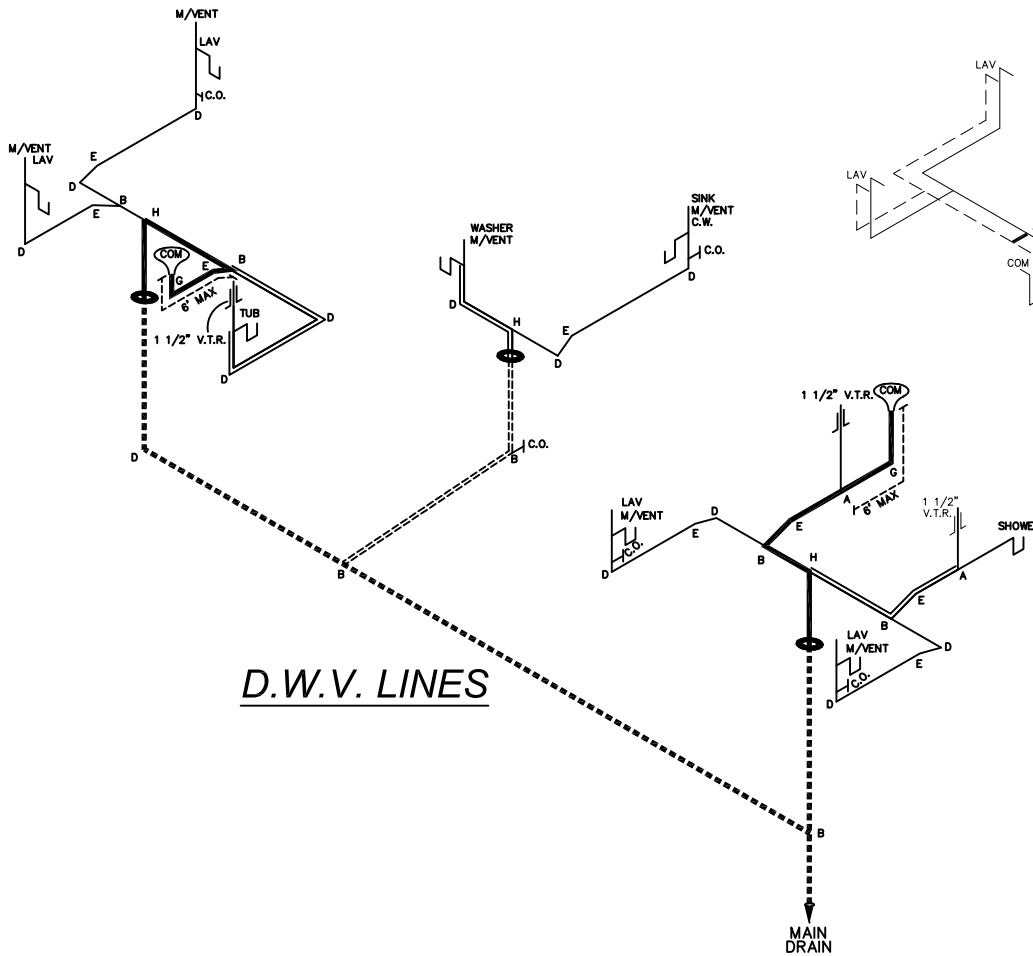
APPROVED **HWC** **APPROVED**
 23 FEB 2022
 FP-28-5513
 Federal Manufactured Home Construction And Safety Standards

1,475 SQ.FT. (STD PLAN "CONDITIONED")
 N/A SQ.FT. (W/OPT. PORCH/RECESS "CONDITIONED")

CMH MANUFACTURING	Model #: UBX28563I	Drawing #:
Date: 2/21/22	Scale: NTS	29M190
Product Designer: E HARDWICK		28' x 56' Ultra Excel

SHEARWALL PAGE

NOTE:
 DASHED LINES INDICATES HOT WATER
 SOLID LINES INDICATES COLD WATER
 ——— = 3/4"
 ——— = 1/2"



D.W.V. LINES

SUPPLY LINES

D.W.V. LINES
OPT. BATH

SUPPLY LINES
OPT. BATH

LEGEND	
A	SHORT TURN T-Y
B	LONG TURN T-Y
C	1/4 BEND
D	LONG SWEEP 1/4 BEND
E	45 ELL
F	DBL. SANITARY TEE
G	4x3 CLOSET ELL
H	DOUBLE ELL
I	22 1/2° ELL
J	45° Y
K	LONG TURN STREET ELBOW
L	45 FTG ELL

DWV LINE SIZE CHART	
—————	= 3"
—————	= 2"
—————	= 1 1/2"

APPROVED **HWC** **APPROVED**
 23 FEB 2022
 FP-28-5513
 Federal Manufactured
 Home Construction
 And Safety Standards

1,475 SQ.FT. (STD PLAN "CONDITIONED")
 N/A SQ.FT. (W/OPT. PORCH/RECESS "CONDITIONED")

CMH MANUFACTURING Product Designer: E HARDWICK	Model #: UBX28563I Date: 2/21/22	Drawing #: 29M190 Scale: NTS
	28' x 56' Ultra Excel	
D.W.V. and Supply Lines		